

Key barometers snapped four-day rising streak on Wednesday, as weakness in other Asian stocks triggered profit selling in the domestic market. Asian stock markets came under selling pressure after US Treasury Secretary said that the United States would continue tariffs on Chinese goods until the completion of a second phase of a US-China trade agreement.

The government will release India's trade data for December 2019 at 18:00 IST today, 15 Wednesday 2019.

Global Markets

South Korea's Hyundai Motor Co unveiled the first sport-utility vehicle (SUV) under its Genesis brand on Wednesday, a move analysts said was crucial for the premium marque's expansion in overseas markets. European shares were flat on Wednesday ahead of the signing of an initial trade deal between Washington and Beijing, as comments from the U.S. Treasury Secretary on China tariffs somewhat dimmed optimism. STOXX rose 0.01%.

INDEX	ADVANCE	DECLINE	UNCHANGED
NSE	1095	684	355
INDEX	ADVANCE	DECLINE	UNCHANGED
BSE	1483	1046	183

Gainers

LARGECAP	%CHANGE	MIDCAP	%CHANGE
YESBANK	+3.50%	MGL	+8.55%
HEROMOTOCO	+2.52%	IGL	+5.40%
TATAMOTORS	+1.97%	PNBHousing	+4.92%
GAIL	+1.42%	RELCAPITAL	+4.78%
TITAN	+1.33%	NBCC	+4.69%

Losers

LARGECAP	%CHANGE	MIDCAP	%CHANGE
INDUSINDBK	-5.58%	CUMMINSIND	-2.21%
WIPRO	-3.50%	SPARC	-1.74%
SBIN	-1.22%	RBLBANK	-1.72%
INFY	-1.21%	DBL	-0.74%
BPCL	-1.13%	VGUARD	-0.56%

Nifty



Indian Markets

INDEX	VALUE	CHANGE	%CHANGE
SENSEX	41872.73	-79.90	-0.19%
NIFTY	12343.30	-19.00	-0.15%
NIFTYBANK	31824.90	-246.75	-0.77%
INDIA VIX	14.1200	+0.21	+1.49%

International Markets

INDEX	VALUE	CHANGE	%CHANGE
DOW	28939.67	+32.62	+0.11%
NASDAQ	9251.33	-22.60	-0.24%
FTSE	7631.68	+9.33	+0.12%
SHANGHAI	3090.04	-16.78	-0.54%
NIKKEI	23916.58	-108.59	-0.45%

OUR PREVIOUS CALLS UPDATE

Intraday super stars

Date	Stocks	Entry	Exit	P/L
15/01	BHARATFORG(L)	522.90	528.15	+2008
15/01	DMART(L)	1940.15	1920.7	-1999

Multibagger

Date	Stock	Entry	Exit	P/L
15/01	ASIANPAINT(L)	1828	1838	+6000

Trifid special

Date	Stock	Entry	Exit	P/L
09/12	STAR(L)	382.40	390.05	+6001

Stock Snippets

Bank of Baroda has executed a share purchase agreement, for sale of its entire equity stake of 10 percent in Equifax Credit Information Services Private Limited.

The construction arm of **L&T** has secured orders from prestigious clients across various Indian states for its varied businesses.

Canara Bank called off the divestment process of its entire stake in Can Fin Homes, which was under the progress. The bank has 30% stake in Can Fin Homes.

Pidilite Industries incorporated a JV to carry on the business of manufacturing, processing and distribution of technical mortars and other materials used in construction.

Sun Pharmaceutical Industries announced that one of its wholly owned subsidiaries has entered into exclusive licensing and supply agreements with Rockwell Medical Inc. (Rockwell), to commercialize Rockwell's Triferic, a proprietary iron replacement and haemoglobin maintenance drug, for treating anaemia in hemodialysis patients in India. Triferic is approved in USA.

Global Markets

Japan stocks were lower after the close on Wednesday, as losses in the Paper & Pulp, Railway & Bus and Real Estate sectors led shares lower. The Nikkei 225 fell 0.45%.

Australia stocks were higher after the close on Wednesday, as gains in the Gold, Industrials and Energy sectors led shares higher. The S&P/ASX 200 gained 0.47% to hit a new all time high.

China's Shanghai Composite and the Shenzhen Component dropped 0.6% and 0.5% respectively

DATE: 15/01/20

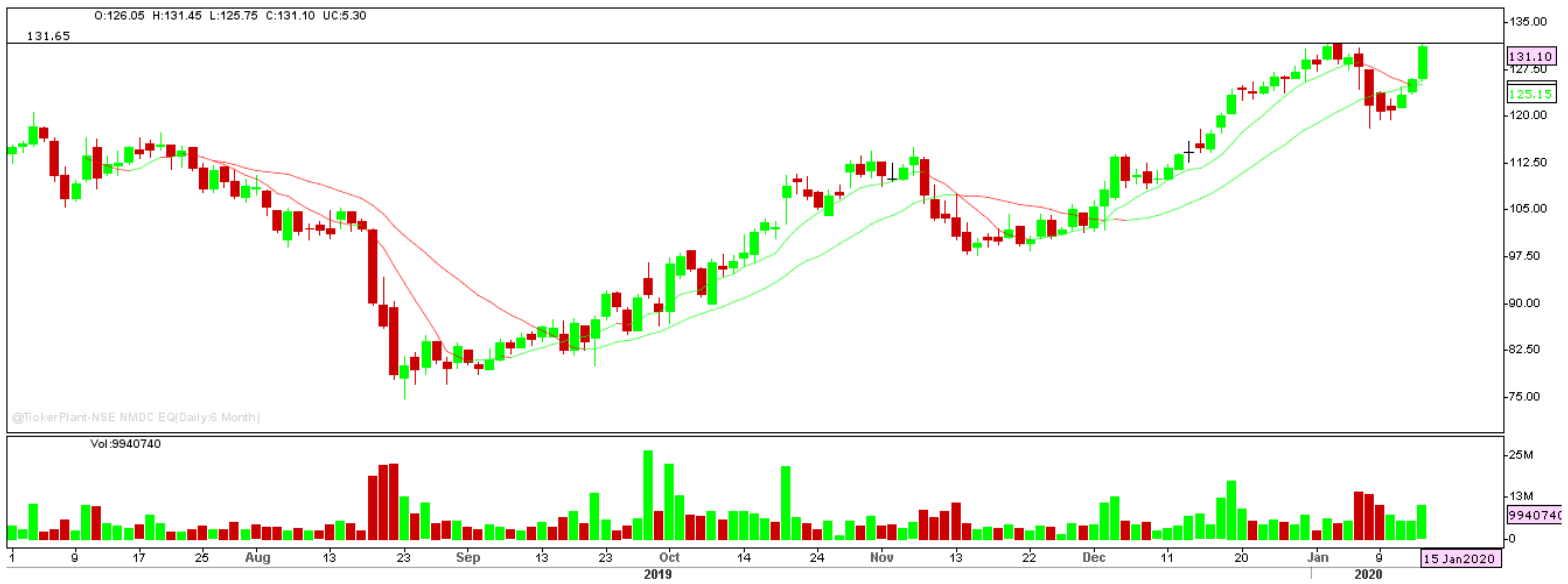
FII/DII	CASH	MTD	YTD
FII	+279.53	-938.44	-938.44
DII	-648.34	-1635.49	-1635.49

Sectoral gainers and losers

SECTOR	%CHANGE IN MARKETCAP	ADV	DEC
Electricals	2.20%	17	8
Agri	1.34%	31	27
Real Estate	1.30%	39	12
Consumer Durables	1.12%	17	9
Chemicals	1.07%	64	40
Textiles	1.01%	57	43
Automobile & Ancillaries	0.88%	65	52
Metals & Mining	0.81%	60	34
Media & Entertainment	0.59%	19	13
Hospitality	0.58%	14	11
ETF	0.57%	32	25
Construction Materials	0.51%	23	28
Plastic Products	0.51%	16	11
Healthcare	0.40%	56	39
FMCG	0.39%	25	17
Power	0.30%	18	8
Finance	0.29%	63	48
Logistics	0.24%	20	8
Infrastructure	0.22%	36	19
Capital Goods	0.15%	49	39
Software & IT Services	0.09%	49	35
Telecom	-0.04%	15	6
Banks	-0.61%	27	13
Miscellaneous	-0.76%	29	14

Stocks breakout on moving average

STOCKS	PRICE	30DMA
MGL	1101	1042.08
CASTROLIND	133.40	129.98
DHFL	16.80	16.44
CADILAHC	262.75	258.87



NMDC EQ is being trading higher on its long term bullish trend and settled near yearly high. The stock may give breakout in coming trade session.

BUY ABOVE 131.65 TARGETS 133/134.35/135.70 SL 130.35.



CHOLAFIN EQ surged higher forming bullish candle on daily chart and settled near to resistance level. The stock may continue to trade higher in coming trade session.

BUY ABOVE 333.55 TARGETS 337/340.35/343.65 SL 330.30.



GRASIM FUT is being trading on mid term bullish trend and sustained higher to 20 DMA with sustainable buy side volume. The stock fut may trade higher in coming trade session.

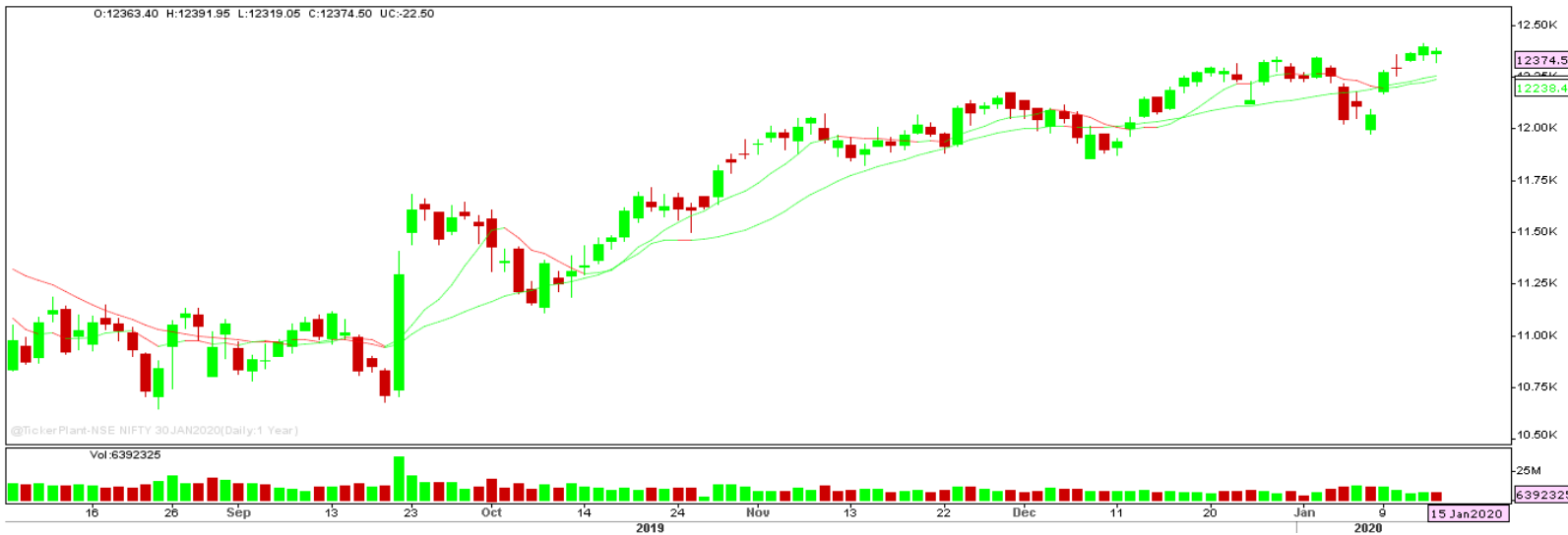
BUY ABOVE 772.50 TARGETS 776.50/780.50 SL 768.50.



COALINDIA EQ surged higher with sustainable buy side volume and settled near the resistance level. The stock may give breakout in coming trade session.

BUY ABOVE 212.80 TARGET 217.10 SL 208.50.

Nifty Technical's



Nifty Future witnessed sell off in first half of trading session however gained the momentum and returned in green in later half to close at 12374.50. The next key support and resistance for the market is at 12300 and 12450.

Bank Nifty Technical's



Bank nifty fut traded lower forming bearish hammer candle on daily chart to close at 31950. The next key support and resistance for the banking index is at 31750 and 32260.

Index	14-JAN-20	15-JAN-20	Change in OI	% Change
NIFTY	13552950	13617375	+64425	+0.48%

SCRIPS IN F&O BAN FOR TRADE

NIL.

Stocks at 52 Week High

Stocks	New 52 W/H	Previous High
ALKEM	2405	2351
APLAPOLLO	1976.70	1975.75
ASIANPAINT	1845	1834.80
AVANTIFEED	710	654
BAJAJFINSV	9619	9579.80

Stocks Approaching 52 Week High

Stocks	LTP	52W High
NMDC	131.10	131.65
HDFCBANK	1284.25	1305.50
DIVISLAB	1866.25	1887
BATAINDIA	1788.15	1814
BAJFINANCE	4207.25	4295.75

Stocks rising continuously 2-3 days

Stocks	LTP
COALINDIA	212.45
HEROMOTOCO	2476.30
TATAMOTORS	200.35
GAIL	131.65

Stocks at 52 Week Low

Stocks	New 52 W/L	Previous Low
AGROPHOS	43.35	45.60
THOMASCOOK	55.60	57.60
-	-	-
-	-	-
-	-	-

Stocks Approaching 52 Week Low

Stocks	LTP	52W Low
HEXAWARE	328.10	312.25
ITC	242.40	233.25
HAVELLS	642.35	622.65
MARICO	345.50	324.25
GILLETTE	6447.90	6169.00

Stocks falling continuously 2-3 days

Stocks	LTP
INDUSINDBK	1400.50
SBIN	324.25
SRTRANSFIN	1098.85
HAVELLS	642.35

Event Calendar(13th to 18th JANUARY 2020)

13/01/20 (Mon)	14/01/20 (Tues)	15/01/20 (Wed)	16/01/20 (Thur)	17/01/20 (Fri)	18/01/20 (Sat)
RESULT: DELTACORP, TATAELXSI ECO DATA: NIKKEI SERVICE PMI DATA ECO DATA: CPI INFLATION.	RESULTS: NETWORK18, TV18BRDCST, MINDTREE, BANDHANBNK, INDUSINDBK, WIPRO ECO DATA: WPI INFLATION.	RESULT: TINPLATE, STRTECH, LTTS, ECO DATA: TRADE BALANCE.	RESULT: TATAMETALI SOUTHBANK, KTKBANK, HATHWAY.	RESULT: L&TFH, BLUEDART, HCLTECH, LTI.	RESULT: CHENNPETRO, HDFCBANK.

DISCLAIMER

Trifid Research respects and values the Right to Privacy of each and every individual. We are esteemed by the relationship and by becoming our clients; you have a promise from our side that we shall remain loyal to all our clients and non-clients whose information resides with us. This Privacy Policy of Trifid Research applies to the current clients as well as former clients. Below are the word by word credentials of our Privacy Policy:

1. Your information, whether public or private, will not be sold, rented, exchanged, transferred or given to any company or individual for any reason without your consent.
2. The only use we will be bringing to your information will be for providing the services to you for which you have subscribed to us.
3. Your information given to us represents your identity with us. If any changes are brought in any of the fields of which you have provided us the information, you shall bring it to our notice by either calling us or dropping a mail to us.
4. In addition to the service provided to you, your information (mobile number, E-mail ID etc.) can be brought in use for sending you newsletters, surveys, contest information, or information about any new services of the company which will be for your benefit and while subscribing for our services, you agree that Trifid Research has the right to do so.
5. By subscribing to our services, you consent to our Privacy Policy and Terms of Use.
6. Trifid research does not guarantee or is responsible in any which way, for the trade execution of our recommendations, this is the sole responsibility of the client.
7. Due to the market's volatile nature, the trader may/ may not get appropriate opportunity to execute the trades at the mentioned prices and Trifid Research hold's no liability for any profit/ loss incurred whatsoever in this case.
8. It is the responsibility of the client to view the report timely from our Premium member section on our website: www.trifidresearch.com and the same will also be mailed to this registered email id.
9. Trifid research does not hold any liability or responsibility of delay in mail delivery of reports, as this depends on our mail service provider's network infrastructure.
10. The clients can call us for any query related to buying/selling the securities, based on our recommendations.