

Key equity market barometers ended with minor gains after a see-saw session on Thursday. Trading was volatile on account of weekly index options expiry on the NSE. Investors booked some profits after the US and China signed a preliminary trade agreement, expectations for which had driven global equities to record highs. On macro front, India's trade deficit narrowed 22.3% to \$11.25 billion in December 2019 from \$14.49 billion in the same month a year ago.

## Global Markets

RWE hit its highest level since September 2014 on Thursday on reports that it will get as much as 2.6 billion euros in compensation to close down its last coal plants. European shares rose on Thursday after the United States and China signed an eagerly awaited Phase 1 trade deal, giving some relief to markets that have been roiled by the 18-month standoff between the world's two-largest economies. STOXX was up 0.3%.

INDEX	ADVANCE	DECLINE	UNCHANGED
NSE	1077	745	119
INDEX	ADVANCE	DECLINE	UNCHANGED
BSE	1486	1080	188

## Gainers

LARGECAP	%CHANGE	MIDCAP	%CHANGE
EICHERMOT	+4.29%	PNBHOUSING	+6.75%
NESTLEIND	+3.42%	HEG	+6.26%
ZEEL	+2.79%	APOLLOHOSP	+5.26%
KOTAKBANK	+1.64%	GRAPHITE	+4.41%
BHARTIARTL	+1.29%	MRPL	+4.19%

## Losers

LARGECAP	%CHANGE	MIDCAP	%CHANGE
NTPC	-2.30%	EDELWEISS	-5.06%
INFRADEL	-2.04%	RELCAPITAL	-4.98%
JSWSTEEL	-2.04%	RELINFRA	-4.89%
GAIL	-2.01%	NBCC	-2.30%
HINDALCO	-1.90%	GODREJIND	-1.78%

## Nifty



## Indian Markets

INDEX	VALUE	CHANGE	%CHANGE
SENSEX	41932.56	+59.83	+0.14%
NIFTY	12355.50	+12.20	+0.10%
NIFTYBANK	31853.90	+29.00	+0.09%
INDIA VIX	14.1825	+0.06	+0.44%

## International Markets

INDEX	VALUE	CHANGE	%CHANGE
DOW	29030.22	+90.55	+0.31%
NASDAQ	9258.70	+7.37	+0.08%
FTSE	7609.25	-33.55	-0.44%
SHANGHAI	3074.08	-15.96	-0.52%
NIKKEI	23933.13	+16.55	+0.07%

## OUR PREVIOUS CALLS UPDATE

### Intraday super stars

Date	Stocks	Entry	Exit	P/L
16/01	CHOLAFIN(L)	333.55	330.30	-1948
16/01	NMDC(L)	131.65	133	+2050

### Multibagger

Date	Stock	Entry	Exit	P/L
16/01	GRASIM(L)	772.50	-	UNEX

### Trifid special

Date	Stock	Entry	Exit	P/L
14/01	COALINDIA(L)	212.80	208.50	-6062

## Stock Snippets

Indian drug regulator, DCGI has approved **Wockhardt's** two new antibiotics, EMROK (IV) and EMROK 0 (Oral), for acute bacterial skin and skin structure Infections including diabetic foot infections and concurrent bacteraemia based on the Phase 3 study involving 500 patients in 40 centres across India.

**Strides Pharma Science Ltd.** announced on Thursday that its step - down wholly owned subsidiary, Strides Pharma Global Pte. Limited, Singapore, has received approval for Loratadine Softgel Capsules, 10 mg (OTC) from the United States Food & Drug Administration (USFDA). The product is a generic version of Claritin® Liqui - Gels® Capsules, 10 mg, of Bayer HealthCare LLC.

**Indian Oil Corporation** has informed the exchange regarding the issue of unsecured debentures on private placement basis.

**Yes Bank** acquires 10.25% stake in Sical Logistics via pledge invocation. Further, Yes Bank has assured customers about the bank's liquidity and stability.

CCI will probe anti-trust moves of **Asian Paints** against JSW Paints.

## Global Markets

Japan stocks were higher after the close on Thursday, as gains in the Paper & Pulp, Railway & Bus and Real Estate sectors led shares higher. The Nikkei 225 rose 0.07%.

China's Shenzhen Composite rose 0.2%, while the Shanghai Composite slipped 0.1%. Hong Kong's Hang Seng Index climbed 0.4%.

Australia stocks were higher after the close on Thursday, as gains in the IT, Consumer Staples and Financials sectors led shares higher. The S&P/ASX 200 added 0.67% to hit a new all time high.

DATE: 16/01/20

FII/DII	CASH	MTD	YTD
FII	-395.24	-1333.68	-1333.68
DII	-184.65	-1820.14	-1820.14

## Sectoral gainers and losers

SECTOR	%CHANGE IN MARKETCAP	ADV	DEC
Media & Entertainment	1.72%	19	14
Textiles	1.61%	60	50
Paper	1.61%	15	7
Consumer Durables	1.51%	22	5
Agri	1.39%	46	14
Electricals	0.87%	15	9
Telecom	0.85%	17	6
Capital Goods	0.79%	53	31
Real Estate	0.76%	33	19
FMCG	0.69%	29	13
Healthcare	0.67%	59	36
Logistics	0.67%	18	12
Chemicals	0.61%	71	32
Plastic Products	0.59%	16	12
Automobile & Ancillaries	0.38%	60	53
Miscellaneous	0.21%	26	15
Software & IT Services	0.17%	49	35
Power	0.17%	18	10
Finance	0.16%	54	62
Banks	0.12%	23	13
Infrastructure	-0.06%	29	27
Construction Materials	-0.69%	30	24
Metals & Mining	-0.84%	37	54
ETF	-0.96%	34	22

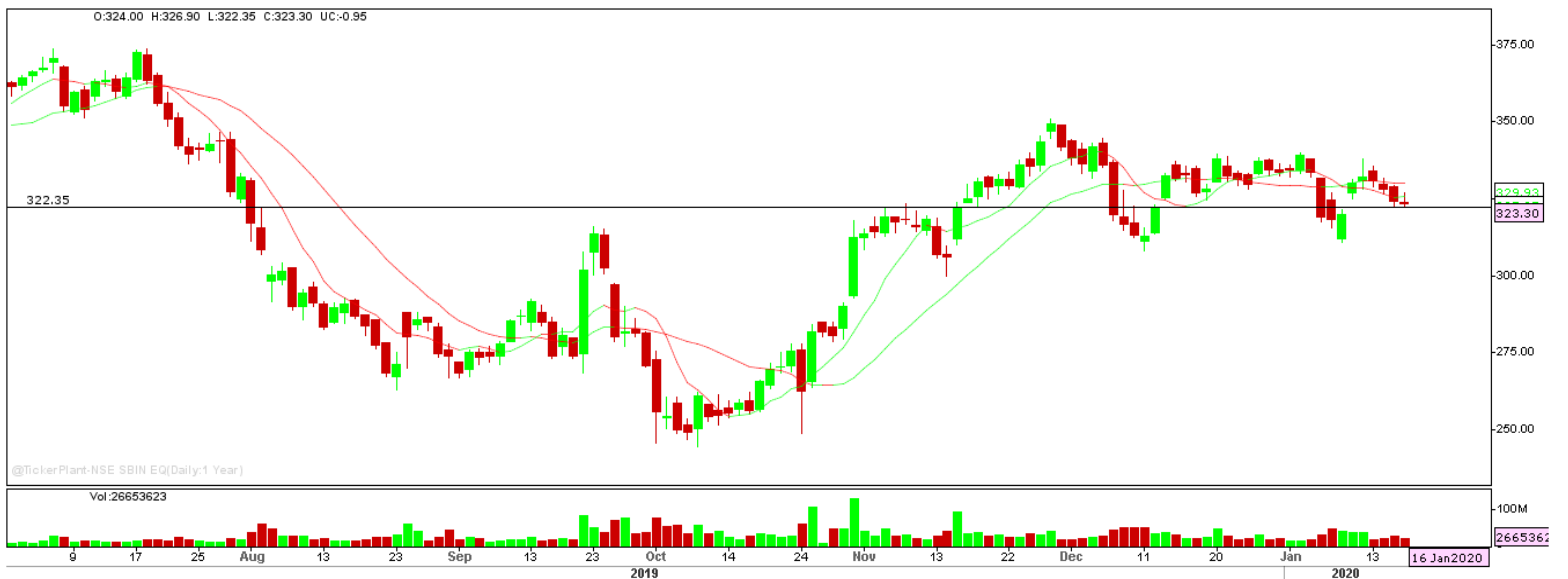
## Stocks breakout on moving average

STOCKS	PRICE	30DMA
HEG	1134.35	1075.49
GRAPHITE	313.50	304.41
HEXWARE	336.85	334.10
RAYMOND	670.45	666.66



BIOCON EQ surged higher with increased buy side volume on chart and settled near to immediate resistance level. The stock may give breakout in coming trade session.

**BUY ABOVE 289.40 TARGETS 292.30/295.20/298.10 SL 286.50**



SBIN EQ is being trading lower from couple of trading sessions and settled near the day low level. The stock may give lower breakdown in coming trade session.

**SELL BELOW 322.35 TARGETS 319.15/315.90/312.70 SL 325.30**



HAVELLS FUT is being trading on mid term bearish trend and sustained lower to 20 DMA with sustainable sell side volume. The stock fut may trade lower in coming trade session.

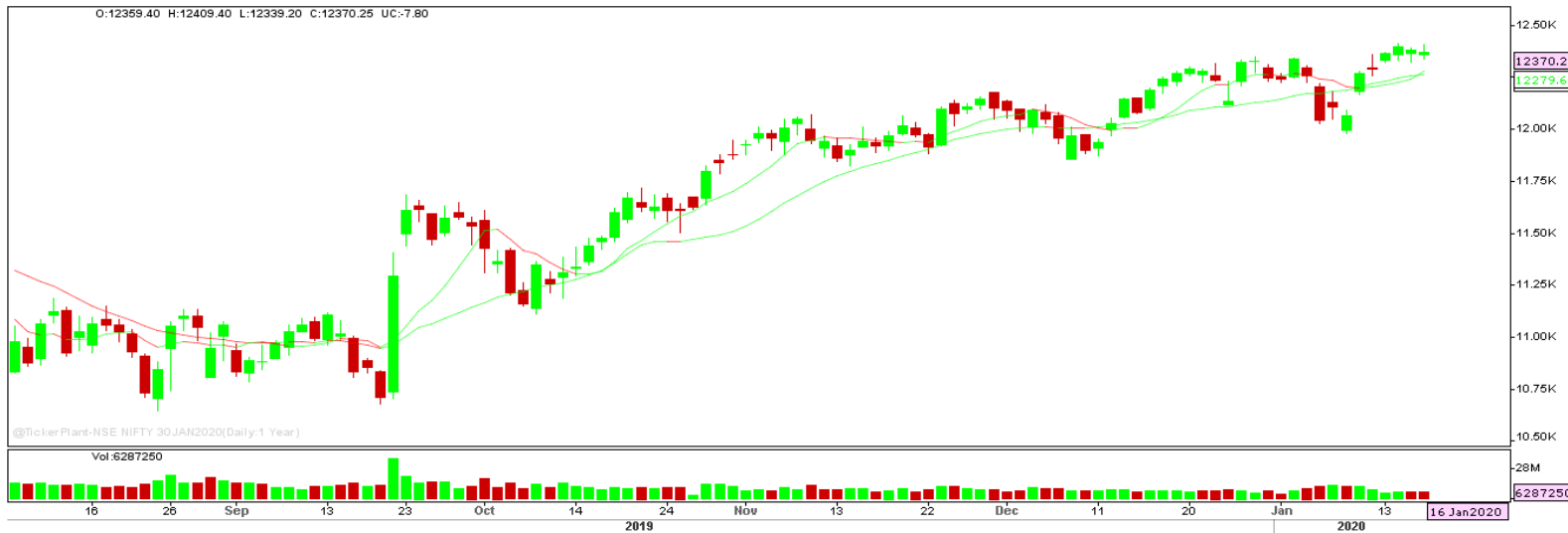
**SELL BELOW 638.70 TARGETS 635.70/632.70 SL 641.70**



MINDTREE EQ surged higher with sustainable buy side volume and settled near the resistance level. The stock may give breakout in coming trade session.

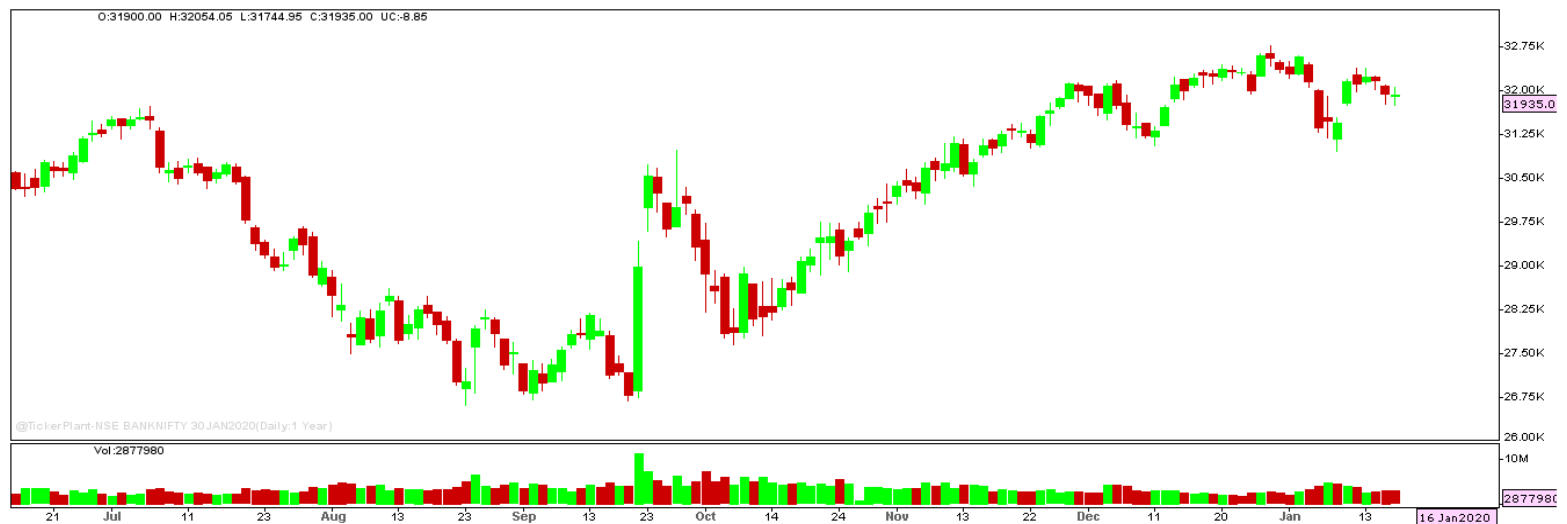
**BUY ABOVE 901.70 TARGETS 919.75 SL 883.65**

## Nifty Technical's



Nifty Future traded flat on the weekly expiry day and settled at 12370.25. The next key support and resistance for the market is at 12300 and 12450.

## Bank Nifty Technical's



Bank nifty fut traded flat on the weekly expiry trading session and settled lower marginally higher at 31935. The next key support and resistance for the banking index is at 31750 and 32260.

Index	15-JAN-20	16-JAN-20	Change in OI	% Change
NIFTY	13072350	13726575	+654225	+5.00%

**SCRIPS IN F&O BAN FOR TRADE**  
YESBANK

## Stocks at 52 Week High

Stocks	New 52 W/H	Previous High
ADANIENT	222.50	221.50
APOLLOHOSP	1607	1579.70
ASIANPAINT	1848	1845
AVANTIFEED	756	710
BAJAJFINSV	9640	9619

## Stocks Approaching 52 Week High

Stocks	LTP	52W High
HDFC	2482.10	2499.90
HDFCBANK	1287.65	1305.50
MRF	67059.40	68100
AMARAJABAT	785.35	798.10
BAJFINANCE	4220.25	4295.75

## Stocks rising continuously 2-3 days

Stocks	LTP
NESTLEIND	15354.90
ZEEL	279.70
BRITANNIA	3150.25
HINDUNILVR	2049.25

## Stocks at 52 Week Low

Stocks	New 52 W/L	Previous Low
AGROPHOS	41.20	43.35
-	-	-
-	-	-
-	-	-
-	-	-

## Stocks Approaching 52 Week Low

Stocks	LTP	52W Low
HEXAWARE	336.85	312.25
ITC	240.75	233.25
HAVELLS	639.50	622.65
MARICO	349.15	324.25
GILLETTE	6457.35	6169.00

## Stocks falling continuously 2-3 days

Stocks	LTP
COALINDIA	210.25
INFRATEL	243.05
BPCL	461.80
TECHM	782.85

## Event Calendar(13<sup>th</sup> to 18<sup>th</sup> JANUARY 2020)

13/01/20 (Mon)	14/01/20 (Tues)	15/01/20 (Wed)	16/01/20 (Thur)	17/01/20 (Fri)	18/01/20 (Sat)
RESULT: DELTACORP, TATAELXSI ECO DATA: NIKKEI SERVICE PMI DATA ECO DATA: CPI INFLATION.	RESULTS: NETWORK18, TV18BRDCST, MINDTREE, BANDHANBNK, INDUSINDBK, WIPRO ECO DATA: WPI INFLATION.	RESULT: TINPLATE, STRTECH, LTTS, ECO DATA: TRADE BALANCE.	RESULT: TATAMETALI SOUTHBANK, KTKBANK, HATHWAY.	RESULT: L&TFH, BLUEDART, HCLTECH, LTI,RELIANCE	RESULT: CHENNPETRO, HDFCBANK.

## DISCLAIMER

Trifid Research respects and values the Right to Privacy of each and every individual. We are esteemed by the relationship and by becoming our clients; you have a promise from our side that we shall remain loyal to all our clients and non-clients whose information resides with us. This Privacy Policy of Trifid Research applies to the current clients as well as former clients. Below are the word by word credentials of our Privacy Policy:

1. Your information, whether public or private, will not be sold, rented, exchanged, transferred or given to any company or individual for any reason without your consent.
2. The only use we will be bringing to your information will be for providing the services to you for which you have subscribed to us.
3. Your information given to us represents your identity with us. If any changes are brought in any of the fields of which you have provided us the information, you shall bring it to our notice by either calling us or dropping a mail to us.
4. In addition to the service provided to you, your information (mobile number, E-mail ID etc.) can be brought in use for sending you newsletters, surveys, contest information, or information about any new services of the company which will be for your benefit and while subscribing for our services, you agree that Trifid Research has the right to do so.
5. By subscribing to our services, you consent to our Privacy Policy and Terms of Use.
6. Trifid research does not guarantee or is responsible in any which way, for the trade execution of our recommendations, this is the sole responsibility of the client.
7. Due to the market's volatile nature, the trader may/ may not get appropriate opportunity to execute the trades at the mentioned prices and Trifid Research hold's no liability for any profit/ loss incurred whatsoever in this case.
8. It is the responsibility of the client to view the report timely from our Premium member section on our website: [www.trifidresearch.com](http://www.trifidresearch.com) and the same will also be mailed to this registered email id.
9. Trifid research does not hold any liability or responsibility of delay in mail delivery of reports, as this depends on our mail service provider's network infrastructure.
10. The clients can call us for any query related to buying/selling the securities, based on our recommendations.