

Key equity market barometers declined after a volatile session on Tuesday. Market sentiment was dented after the International Monetary Fund (IMF) lowered India's growth forecast. Muted quarterly results by key index constituents and negative global cues also put pressure on domestic shares. On macro front, the International Monetary Fund (IMF) on Monday (20 January) said global growth, estimated at 2.9% in 2019, is projected to increase to 3.3% in 2020 and inch up further to 3.4% in 2021.

## Global Markets

Japanese supermarket chain Aeon Co Ltd, said it aims to start selling eco-certified sushi this year amid growing demand for sustainable seafood and in time for an expected surge in tourists during the Tokyo Olympics. European stock markets are set to open lower Tuesday, following losses in Asia overnight amid worries about the extent of a new virus in China. The DAX futures contract traded 110 points, or 0.8%, lower.

INDEX	ADVANCE	DECLINE	UNCHANGED
NSE	781	1049	110
INDEX	ADVANCE	DECLINE	UNCHANGED
BSE	1078	1434	162

## Gainers

LARGECAP	%CHANGE	MIDCAP	%CHANGE
INFRAEEL	+8.63%	DISHTV	+5.49%
ZEEL	+4.52%	RBLBANK	+4.66%
BPCL	+1.39%	JINDALSTEL	+3.63%
COALINDIA	+0.60%	LICHSGFIN	+3.25%
KOTAKBANK	+0.58%	JUBILANT	+3.04%

## Losers

LARGECAP	%CHANGE	MIDCAP	%CHANGE
TATASTEEL	-3.29%	PFC	-5.07%
M&M	-2.86%	SPARC	-3.70%
TATAMOTORS	-2.44%	RELINFRA	-3.47%
ASIANPAINT	-2.15%	CASTROLIND	-2.58%
MARUTI	-2.04%	MRPL	-2.47%

## Nifty



## Indian Markets

INDEX	VALUE	CHANGE	%CHANGE
SENSEX	41323.81	-205.10	-0.49%
NIFTY	12169.85	-54.70	-0.45%
NIFTYBANK	30947.55	-133.10	-0.43%
INDIA VIX	15.8625	+0.45	+2.94%

## International Markets

INDEX	VALUE	CHANGE	%CHANGE
DOW	29348.10	+50.46	+0.17%
NASDAQ	9388.94	+31.81	+0.34%
FTSE	7589.26	-62.18	-0.81%
SHANGHAI	3052.14	-43.65	-1.41%
NIKKEI	23864.56	-218.95	-0.91%

## OUR PREVIOUS CALLS UPDATE

### Intraday super stars

Date	Stocks	Entry	Exit	P/L
21/01	HAVELLS(S)	622.35	628.60	-2008
21/01	MC DOWELL-N(S)	574.50	580.25	-2001

### Multibagger

Date	Stock	Entry	Exit	P/L
21/01	ACC(S)	1495	1504	-3600

### Trifid special

Date	Stock	Entry	Exit	P/L
21/01	CENTURYTEX(L)	542.90	553.80	+6023

## Stock Snippets

NMDC announced a hike of up to Rs 400 per tonne in the prices of lump ore and fines, marking the second increase in rates within a month.

**Balrampur Chini Mills** said an explosion has occurred in a CO2 tanker at incineration plant which damaged the pipelines/pumps at one unit of the company.

**Vodafone Idea, Bharti Airtel and Tata Teleservices**, have filed a modification petition with the Supreme Court on January 20, seeking an extension to the January 23 deadline to pay dues in connection with its Adjusted Gross Revenue (AGR) verdict.

**NBCC (India) Ltd.** has received a letter of acceptance from Central Coalfield Limited (CCL) to provide Project Management Consultancy services for Construction of Smart Township/Colony Roads, Network and other Road, Services Buildings and other Allied jobs related to mines for Magadh and Amrapali area, Jharkhand.

**Cadila Health** gets USFDA nod for anti-depression drug, Bupropion Hydrochloride.

## Global Markets

Japan stocks were lower after the close on Tuesday, as losses in the Paper & Pulp, Railway & Bus and Real Estate sectors led shares lower. The Nikkei 225 declined 0.91%.

Australia stocks were lower after the close on Tuesday, as losses in the IT, Utilities and Energy sectors led shares lower. The S&P/ASX 200 fell 0.19%.

Israel stocks were lower as losses in the Oil & Gas, Real Estate and Technology sectors led shares lower. Tel Aviv, the TA 35 fell 0.10%.

DATE: 21/01/20

FII/DII	CASH	MTD	YTD
FII	-50.08	-1113.66	-1113.66
DII	-307.81	-4047.97	-4047.97

## Sectoral gainers and losers

SECTOR	%CHANGE IN MARKETCAP	ADV	DEC
Media & Entertainment	2.30%	19	15
Agri	0.24%	27	34
Logistics	0.14%	13	16
Diversified	0.07%	7	14
Finance	-0.02%	51	58
Miscellaneous	-0.04%	17	29
Hospitality	-0.06%	12	14
Capital Goods	-0.12%	32	54
Construction Materials	-0.15%	16	37
Software & IT Services	-0.18%	41	44
Consumer Durables	-0.24%	12	14
Infrastructure	-0.41%	22	39
Banks	-0.44%	15	24
Healthcare	-0.55%	35	61
FMCG	-0.68%	16	24
Textiles	-0.70%	36	68
ETF	-0.75%	13	41
Trading	-0.96%	3	15
Automobile & Ancillaries	-1.02%	45	70
Chemicals	-1.08%	43	60
Metals & Mining	-1.17%	41	55
Real Estate	-1.33%	20	33
Power	-1.38%	12	18
Electricals	-1.95%	8	14

## Stocks breakout on moving average

STOCKS	PRICE	30DMA
CANFINHOME	463.60	396.20
DISHTV	13.45	13.04
ZEEL	284.10	280.25
-	-	-



BANDHANBNK EQ is being trading on its midterm sell trend and settled bearishly biased near the immediate support level. The stock may give lower breakdown in coming trade session.

**SELL BELOW 473.80 TARGETS 469.05/464.35/459.60 SL 478.55**



IOC EQ is being trading lower on daily chart and settled lower near the support level. The stock may give lower break down in coming trade session.

**SELL BELOW 113.70 TARGETS 112.55/111.45/110.30 SL 114.85**



WIPRO FUT is being trading on midterm sideways trend and hovering near support with sustainable sell side volume. The stock fut may trade lower in coming trade session.

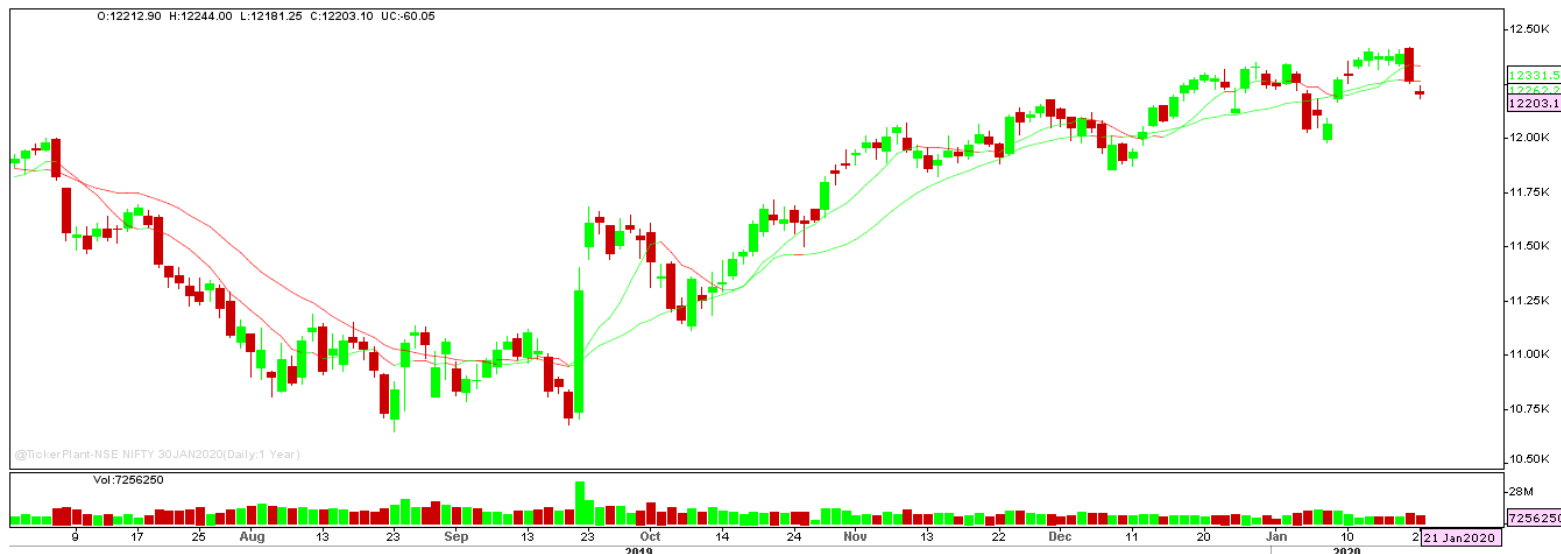
**SELL BELOW 245.90 TARGETS 244.95/244.05 SL 246.85**



GUJGASLTD EQ is being forming bullish consolidation on daily chart and settled forming bullish candle on daily chart. The stock may give bullish breakout in coming trade session.

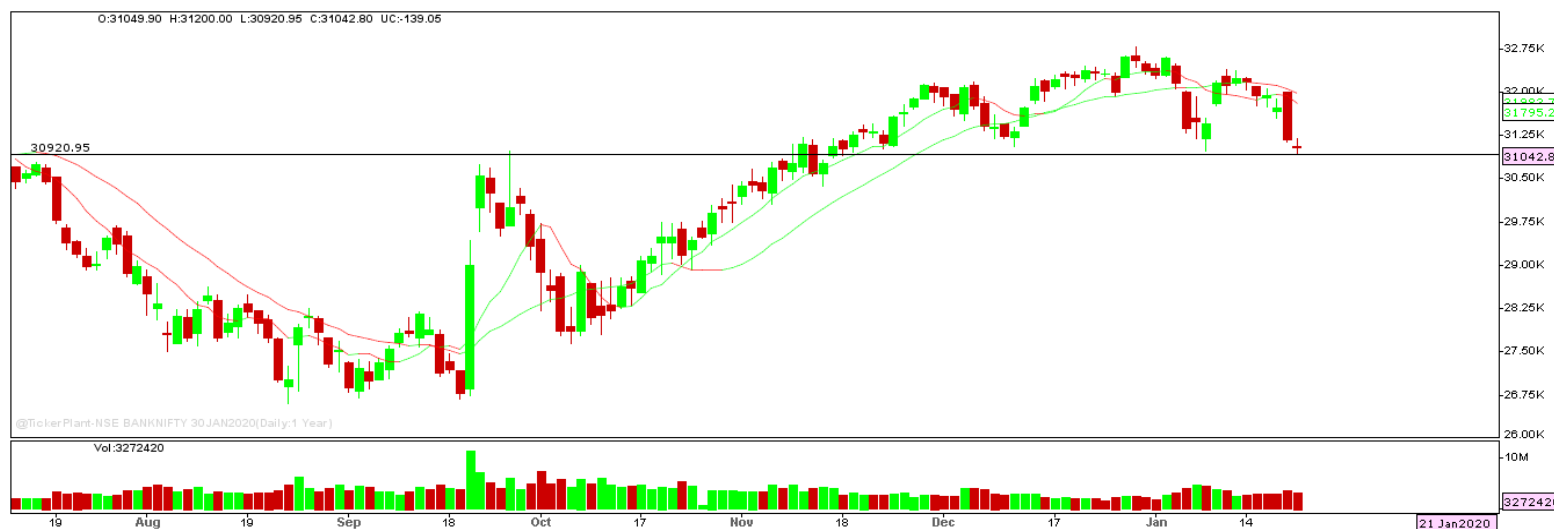
**BUY ABOVE 278.90 TARGETS 284.50 SL 273.30**

## Nifty Technical's



Nifty Future tanked after opening gaped down and settled lower at 12203.10. The next key support and resistance for the market is at 12100 and 12300.

## Bank Nifty Technical's



Bank nifty fut too traded lower forming doji candle on daily chart and settled at 31042.80. The next key support and resistance for the banking index is at 30700 and 31250.

Index	20-JAN-20	21-JAN-20	Change in OI	% Change
NIFTY	13181400	13673175	-491775	+3.59%

SCRIPS IN F&O BAN FOR TRADE  
YESBANK.

## Stocks at 52 Week High

Stocks	New 52 W/H	Previous High
APLAPOLLO	2022.10	1976.10
BHARTIARTL	515	512.70
CANFINHOME	467.15	433.70
CDSL	283.60	282
FORCEMOT	1504	1487

## Stocks Approaching 52 Week High

Stocks	LTP	52W High
HDFC	2465.45	2499.90
IGL	472.10	479.40
DABUR	487	494.40
BATAINDIA	1788.35	1814
NIITTECH	1801.65	1819.90

## Stocks rising continuously 2-3 days

Stocks	LTP
CENTURYTEX	558.45
INFRATEL	240.50
BPCL	463.85
IDEA	5.95

## Stocks at 52 Week Low

Stocks	New 52 W/L	Previous Low
AGROPHOS	35.35	37.20
HAVELLS	612.85	622.5
RELCAPITAL	9.90	9.95
SIS	492.60	500.05
UJJIVANSFB	48.35	48.60

## Stocks Approaching 52 Week Low

Stocks	LTP	52W Low
GILLETTE	6322.80	6169
ITC	238.45	233.25
INDIANB	104.70	97.25
MARICO	336.75	324.25
MPHASIS	880	1286.10

## Stocks falling continuously 2-3 days

Stocks	LTP
TATASTEEL	476.15
M&M	552.80
VEDL	153.90
EICHERMOT	21056.50

## Event Calendar(20<sup>th</sup> to 25<sup>th</sup> JANUARY 2020)

20/01/20 (Mon)	21/01/20 (Tues)	22/01/20 (Wed)	23/01/20 (Thur)	24/01/20 (Fri)	25/01/20 (Sat)
RESULT: CANFIHOME, FEDERALBNK, HFCL, HINDZINC, JUSTDIAL, KOTAKBANK, ISEC.	RESULTS: GRANUELS, HAVELLS , HDFCAMC, ZEEL.	RESULT: ASIANPAINTS, CEATLTD, AXISBANK, APLLTD, RAYMOND, RBLBANK.	RESULT: BIOCON,CANBK, DBCORP, CHOLAFIN, HDFCLIFE, JMFINANCIL.	RESULT: BANKBARODA, JSWSTEEL, SUPREMEIND.	RESULT: DCBBANK, ICICIBANK, MUTHOOTCAP.

## DISCLAIMER

Trifid Research respects and values the Right to Privacy of each and every individual. We are esteemed by the relationship and by becoming our clients; you have a promise from our side that we shall remain loyal to all our clients and non-clients whose information resides with us. This Privacy Policy of Trifid Research applies to the current clients as well as former clients. Below are the word by word credentials of our Privacy Policy:

1. Your information, whether public or private, will not be sold, rented, exchanged, transferred or given to any company or individual for any reason without your consent.
2. The only use we will be bringing to your information will be for providing the services to you for which you have subscribed to us.
3. Your information given to us represents your identity with us. If any changes are brought in any of the fields of which you have provided us the information, you shall bring it to our notice by either calling us or dropping a mail to us.
4. In addition to the service provided to you, your information (mobile number, E-mail ID etc.) can be brought in use for sending you newsletters, surveys, contest information, or information about any new services of the company which will be for your benefit and while subscribing for our services, you agree that Trifid Research has the right to do so.
5. By subscribing to our services, you consent to our Privacy Policy and Terms of Use.
6. Trifid research does not guarantee or is responsible in any which way, for the trade execution of our recommendations, this is the sole responsibility of the client.
7. Due to the market's volatile nature, the trader may/ may not get appropriate opportunity to execute the trades at the mentioned prices and Trifid Research hold's no liability for any profit/ loss incurred whatsoever in this case.
8. It is the responsibility of the client to view the report timely from our Premium member section on our website: [www.trifidresearch.com](http://www.trifidresearch.com) and the same will also be mailed to this registered email id.
9. Trifid research does not hold any liability or responsibility of delay in mail delivery of reports, as this depends on our mail service provider's network infrastructure.
10. The clients can call us for any query related to buying/selling the securities, based on our recommendations.