

Key domestic benchmarks declined for third straight session on Wednesday. Large-caps witnessed selling pressure due to concerns over stretched valuations. Investors also turned cautious ahead of the Union Budget on 1 February 2020.

The Nifty 50 index lost 62.95 points or 0.52% to 12,106.90, as per the provisional closing data. After hitting an intraday low of 12,087.90, the index recovered to close above its 50-day daily SMA placed at 12,104.99.

Global Markets

Bank of America Corp will recruit about 50 bankers for its investment team in Asia this year, as it pushes to bulk up its dealmaking business. Germany's DAX index posted a record high shortly after the start of trading Wednesday, helped by the improved sentiment emerging from Asia regarding the new pneumonia-like virus in China. STOXX 600 (STOXX) was up 0.2%.

INDEX	ADVANCE	DECLINE	UNCHANGED
NSE	739	1036	369
INDEX	ADVANCE	DECLINE	UNCHANGED
BSE	1084	1417	177

Gainers

LARGECAP	%CHANGE	MIDCAP	%CHANGE
ZEEL	+4.89%	DISHTV	+5.58%
GRASIM	+2.64%	RELINFRA	+4.87%
NESTLEIND	+1.84%	RELCAPITAL	+4.55%
TCS	+1.78%	GRAPHITE	+3.45%
ADANI PORTS	+1.07%	HEG	+2.64%

Losers

LARGECAP	%CHANGE	MIDCAP	%CHANGE
ONGC	-5.25%	OIL	-5.65%
COALINDIA	-5.24%	NBCC	-3.64%
NTPC	-3.97%	SPARC	-1.96%
TATAMOTORS	-3.03%	HEXAWARE	-1.86%
UPL	-2.99%	BERGEPAIN	-1.75%

Nifty



Indian Markets

INDEX	VALUE	CHANGE	%CHANGE
SENSEX	41115.38	-208.43	-0.50%
NIFTY	12106.90	-62.95	-0.52%
NIFTYBANK	30701.45	-246.10	-0.80%
INDIA VIX	16.4175	+0.56	+3.49%

International Markets

INDEX	VALUE	CHANGE	%CHANGE
DOW	29196.04	-152.06	-0.52%
NASDAQ	9370.81	-18.13	-0.19%
FTSE	7611.75	+1.05	+0.01%
SHANGHAI	3060.75	+8.61	+0.28%
NIKKEI	24031.35	+166.79	+0.70%

OUR PREVIOUS CALLS UPDATE

Intraday super stars

Date	Stocks	Entry	Exit	P/L
22/01	IOC(S)	113.70	114.85	-2022
22/01	BANDHANBNK(S)	473.80	475.50	-717

Multibagger

Date	Stock	Entry	Exit	P/L
22/01	ACC(S)	1495	1504	-3600

Trifid special

Date	Stock	Entry	Exit	P/L
21/01	CENTURYTEX(L)	542.90	553.80	+6023

Stock Snippets

HCL Tech launches a dedicated microsoft business unit.

Biocon received the subscription money aggregating to Rs 536.25 crore from Activ Pine LLP (an affiliate of True North Fund VI LLP).

JLR is likely to cut jobs at UK Halewood plant, comprising of over 10 percent of workforce, quoting Reuters, reported CNBC-TV18. **Tata Motors** share price declined 3 percent on January 22.

Edelweiss Finance & Investments announced the public issue of Secured Redeemable Non-Convertible Debentures (NCDs) of a face value of Rs 1,000 each, amounting to Rs 125 crore, with an option to retain over-subscription up to Rs 125 crore aggregating to a total of Rs 250 crore.

Power Mech has received letter of award/work orders worth Rs 351 crore from BHEL and Jayprakash Power Ventures.

Themis Medicare started receiving orders for supply of Feracrylum 1% Gel 15 gms To be included in first aid kit and is likely to receive similar such orders in future.

Global Markets

Asian markets rebounded in morning trade on Wednesday in Asia, but sentiment remained fragile as the mysterious Wuhan Coronavirus continued to spread and had reached the U.S. The Shanghai Composite dropped 0.2%

Japan stocks were higher after the close on Wednesday, as gains in the Paper & Pulp, Railway & Bus and Real Estate sectors led shares higher. The Nikkei 225 added 0.70%.

Australia stocks were higher after the close on Wednesday, as gains in the Consumer Staples, IT and Healthcare sectors led shares higher. The S&P/ASX 200 rose 0.94% to hit a new all time high.

DATE: 21/01/20

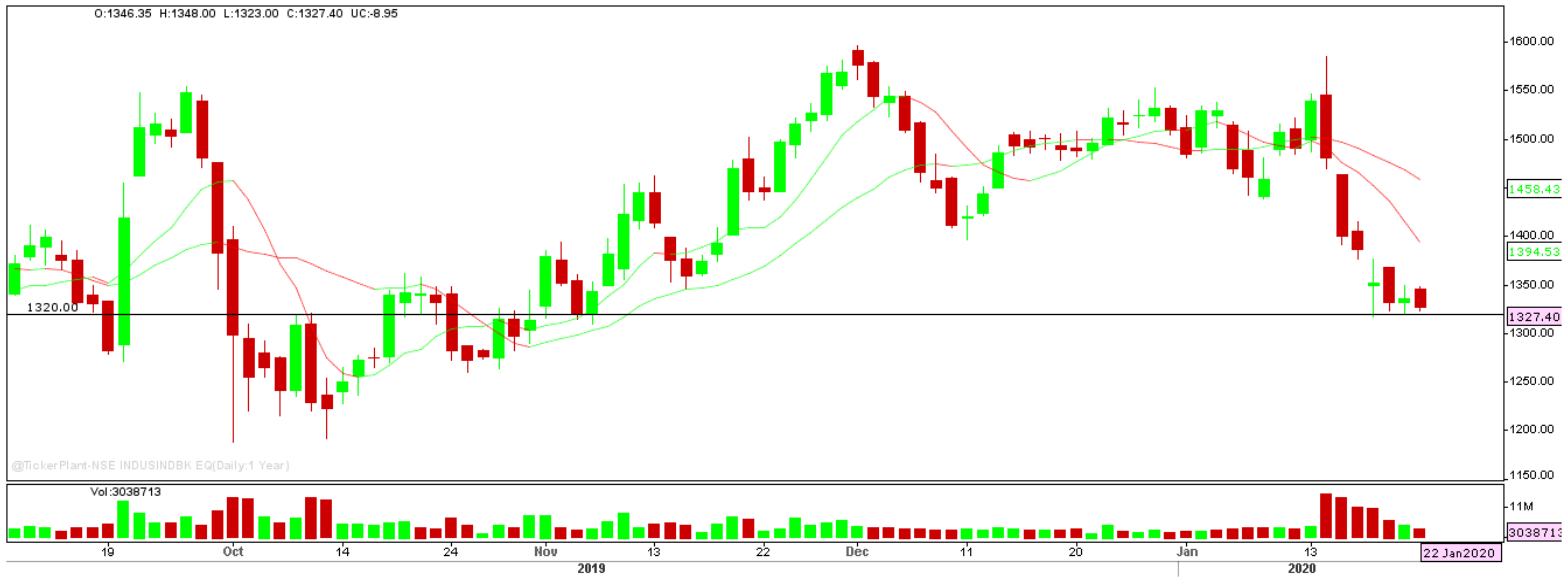
FII/DII	CASH	MTD	YTD
FII	-50.08	-1113.66	-1113.66
DII	-307.81	-4047.97	-4047.97

Sectoral gainers and losers

SECTOR	%CHANGE IN MARKETCAP	ADV	DEC
Media & Entertainment	2.12%	8	20
Software & IT Services	1.15%	33	51
Agri	0.48%	32	28
Construction Materials	0.38%	24	30
Telecom	0.15%	10	11
FMCG	0.06%	13	28
Miscellaneous	0.05%	23	23
Hospitality	0.05%	15	12
Textiles	-0.05%	38	68
Healthcare	-0.08%	39	54
Real Estate	-0.11%	24	30
Paper	-0.11%	10	10
Logistics	-0.22%	13	15
Infrastructure	-0.32%	13	42
Plastic Products	-0.41%	12	17
Consumer Durables	-0.57%	11	15
Finance	-0.58%	51	61
Automobile & Ancillaries	-0.77%	45	66
Chemicals	-0.83%	36	68
Capital Goods	-0.85%	39	47
Power	-1.52%	10	19
ETF	-1.69%	13	43
Metals & Mining	-1.73%	25	70
Electricals	-4.28%	9	14

Stocks breakout on moving average

STOCKS	PRICE	30DMA
ICICIPRULI	506.50	489.71
TCS	2206.90	2176.32
MPHASIS	888.90	883.25
BAJFINANCE	4142.20	4139.81



INDUSINDBK EQ is being trading on its midterm sell trend and settled bearishly biased near the immediate support level. The stock may give lower breakdown in coming trade session.

SELL BELOW 1320 TARGETS 1306.80/1293.60/1280.40 SL 1333.20



JSWSTEEL EQ is being trading lower on daily chart and settled lower near the support level. The stock may give lower break down in coming trade session.

SELL BELOW 264.35 TARGETS 261.70/259.05/256.40 SL 267



WIPRO FUT is being trading on midterm sideways trend and hovering near support with sustainable sell side volume. The stock fut may trade lower in coming trade session.

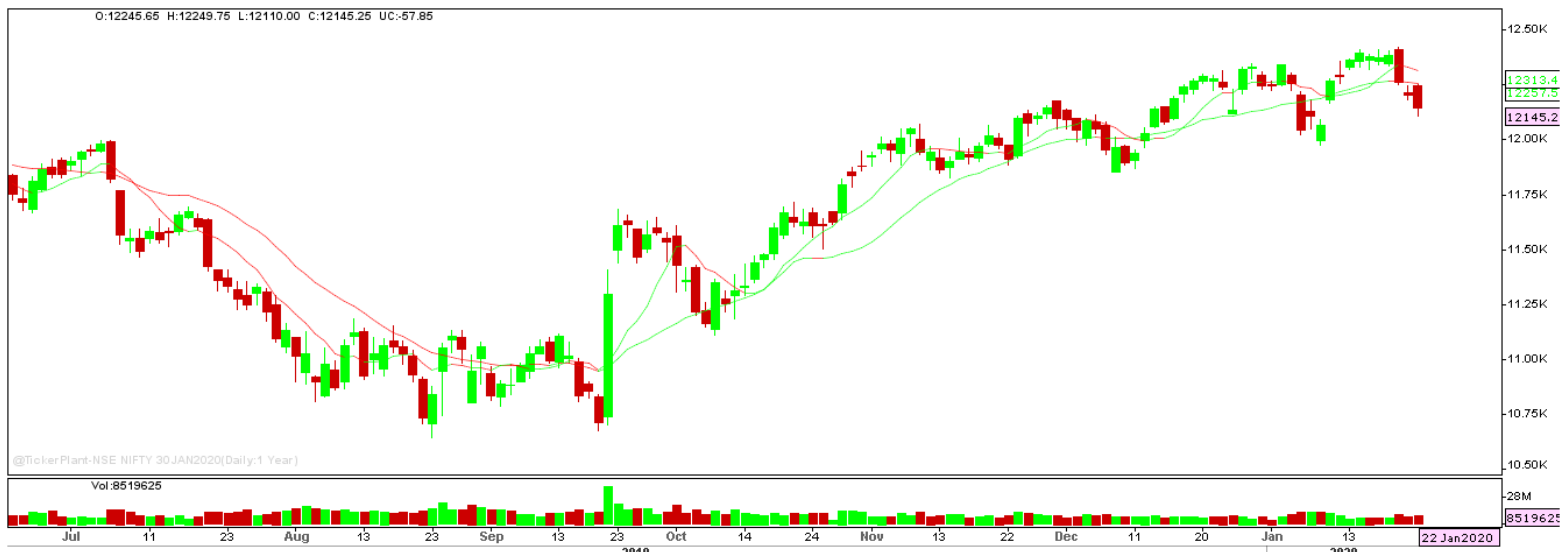
SELL BELOW 245.90 TARGETS 244.95/244.05 SL 246.85



GUJGASLTD EQ is being forming bullish consolidation on daily chart and settled forming bullish candle on daily chart. The stock may give bullish breakout in coming trade session.

BUY ABOVE 278.90 TARGETS 284.50 SL 273.30

Nifty Technical's



Nifty Future tanked forming bearish engulfing candle on daily chart and settled at 12145.25. The next key support and resistance for the market is at 12050 and 12250.

Bank Nifty Technical's



Bank nifty fut too traded lower forming bearish engulfing candle on daily chart to close at 30802.85. The next key support and resistance for the banking index is at 30580 and 31200.

Index	21-JAN-20	22-JAN-20	Change in OI	% Change
NIFTY	13017450	12877650	-139800	-1.07%

SCRIPS IN F&O BAN FOR TRADE
YESBANK.

Stocks at 52 Week High

Stocks	New 52 W/H	Previous High
APOLLOHOSP	1664	1659
BHARTIARTL	523.75	515
CANFINHOME	505	467.15
CDSL	285.50	283.60
DRREDDY	3105.05	3080

Stocks Approaching 52 Week High

Stocks	LTP	52W High
IPCALAB	1229.45	1261.70
IGL	472	479.40
DABUR	486.80	494.40
BATAINDIA	1775.20	1814
DLF	258.10	264

Stocks rising continuously 2-3 days

Stocks	LTP
ZEEL	300.35
GRASIM	792.90
TCS	2206.90
BHARTIARTL	514.50

Stocks at 52 Week Low

Stocks	New 52 W/L	Previous Low
AGROPHOS	33.60	35.35
HAVELLS	588.30	612.85
IOC	111.95	113.70
OIL	137.10	139.65
-	-	-

Stocks Approaching 52 Week Low

Stocks	LTP	52W Low
GILLETTE	6305.45	6169
ITC	238.05	233.25
INDIANB	103.95	97.25
MARICO	334.65	324.25
MPHASIS	888.90	827.75

Stocks falling continuously 2-3 days

Stocks	LTP
ONGC	116.40
COALINDIA	191.90
NTPC	112.15
UPL	562.95

Event Calendar(20th to 25th JANUARY 2020)

20/01/20 (Mon)	21/01/20 (Tues)	22/01/20 (Wed)	23/01/20 (Thur)	24/01/20 (Fri)	25/01/20 (Sat)
RESULT: CANFIHOME, FEDERALBNK, HFCL, HINDZINC, JUSTDIAL, KOTAKBANK, ISEC.	RESULTS: GRANUELS, HAVELLS , HDFCAMC, ZEEL.	RESULT: ASIANPAINTS, CEATLTD, AXISBANK, APLLTD, RAYMOND, RBLBANK.	RESULT: BIOCON,CANBK, DBCORP, CHOLAFIN, HDFCLIFE, JMFINANCIL.	RESULT: BANKBARODA, JSWSTEEL, SUPREMEIND.	RESULT: DCBBANK, ICICIBANK, MUTHOOTCAP.

DISCLAIMER

Trifid Research respects and values the Right to Privacy of each and every individual. We are esteemed by the relationship and by becoming our clients; you have a promise from our side that we shall remain loyal to all our clients and non-clients whose information resides with us. This Privacy Policy of Trifid Research applies to the current clients as well as former clients. Below are the word by word credentials of our Privacy Policy:

1. Your information, whether public or private, will not be sold, rented, exchanged, transferred or given to any company or individual for any reason without your consent.
2. The only use we will be bringing to your information will be for providing the services to you for which you have subscribed to us.
3. Your information given to us represents your identity with us. If any changes are brought in any of the fields of which you have provided us the information, you shall bring it to our notice by either calling us or dropping a mail to us.
4. In addition to the service provided to you, your information (mobile number, E-mail ID etc.) can be brought in use for sending you newsletters, surveys, contest information, or information about any new services of the company which will be for your benefit and while subscribing for our services, you agree that Trifid Research has the right to do so.
5. By subscribing to our services, you consent to our Privacy Policy and Terms of Use.
6. Trifid research does not guarantee or is responsible in any which way, for the trade execution of our recommendations, this is the sole responsibility of the client.
7. Due to the market's volatile nature, the trader may/ may not get appropriate opportunity to execute the trades at the mentioned prices and Trifid Research hold's no liability for any profit/ loss incurred whatsoever in this case.
8. It is the responsibility of the client to view the report timely from our Premium member section on our website: www.trifidresearch.com and the same will also be mailed to this registered email id.
9. Trifid research does not hold any liability or responsibility of delay in mail delivery of reports, as this depends on our mail service provider's network infrastructure.
10. The clients can call us for any query related to buying/selling the securities, based on our recommendations.