

The market barometers snapped three-day losing streak after a volatile session on Thursday. The Nifty managed to close above the 12,150 level. Trading was volatile on account of weekly index expiry on the NSE. Global stock markets declined amid increasing concerns over the spread of the mysterious coronavirus that has infected hundreds in China. Domestic shares, however, got a boost after crude oil prices fell to their lowest in seven weeks as the coronavirus outbreak in China could trigger slowdown in air travel.

## Global Markets

Macquarie's chief executive and her predecessor are among 60 present and former staff to be named as suspects by German authorities, the Australian bank said. European shares fell in early trading on Thursday, hit by worries over the spread of a new flu-like virus in China, with investors also bracing for the European Central Bank's first policy decision of the year. The pan-European STOXX 600 (STOXX) index dropped 0.4%.

INDEX	ADVANCE	DECLINE	UNCHANGED
NSE	1077	728	337
INDEX	ADVANCE	DECLINE	UNCHANGED
BSE	1456	1069	144

## Gainers

LARGECAP	%CHANGE	MIDCAP	%CHANGE
YESBANK	+6.50%	AUBANK	+9.86%
IOC	+4.14%	LTTS	+5.60%
BPCL	+2.98%	IGL	+3.95%
GAIL	+2.98%	PFC	+3.90%
LT	+2.94%	M&MFIN	+3.89%

## Losers

LARGECAP	%CHANGE	MIDCAP	%CHANGE
ZEEL	-7.03%	PNBHOUSING	-5.45%
UPL	-3.69%	EDELWEISS	-3.78%
CIPLA	-1.37%	CUMMINSIND	-2.53%
TECHM	-1.26%	SYNGENE	-1.60%
EICHERMOT	-0.87%	ALKEM	-1.32%

## Nifty



## Indian Markets

INDEX	VALUE	CHANGE	%CHANGE
SENSEX	41386.40	+271.02	+0.66%
NIFTY	12180.35	+73.45	+0.61%
NIFTYBANK	31004.05	+302.60	+0.99%
INDIA VIX	15.8550	-0.51	-3.09%

## International Markets

INDEX	VALUE	CHANGE	%CHANGE
DOW	29186.27	-9.77	-0.03%
NASDAQ	9383.77	+12.96	+0.14%
FTSE	7555.03	-16.89	-0.22%
SHANGHAI	2976.53	-84.22	-2.75%
NIKKEI	23795.44	-235.91	-0.98%

## OUR PREVIOUS CALLS UPDATE

### Intraday super stars

Date	Stocks	Entry	Exit	P/L
23/01	JSWSTEEL(S)	264.35	267	-2004
23/01	INDUSINDBK(S)	1320	-	UNEX

### Multibagger

Date	Stock	Entry	Exit	P/L
22/01	WIPRO(S)	245.90	246.85	-3040

### Trifid special

Date	Stock	Entry	Exit	P/L
22/01	GUJGASLTD(L)	278	284.50	+6023

## Stock Snippets

**KEC International** has secured new orders of Rs 1,255 crore across its various businesses.

**Laurus Labs** has received an Establishment Inspection Report (EIR) (for the Pre-Approval Inspection) from US Food and Drug Administration (USFDA) for its Unit-2 (FDF&API integrated facility) located at APSEZ, Atchutapuram, Visakhapatnam, Andhra Pradesh.

Shares of **Yes Bank** surged almost 8 percent on January 23, buoyed by reports that the State Bank of India (SBI) Chairman Rajnish Kumar subtly indicated the private lender will not be allowed to fail.

**Alembic Pharmaceuticals Limited (Alembic)** today announced it has received final approval from the US Food & Drug Administration (USFDA) for its Abbreviated New Drug Application (ANDA) Bimatoprost Ophthalmic Solution, 0.03%.

**Dilip Buildcon** has executed the EPC agreement with the Uttar Pradesh Expressways Industrial Development Authority (UPEIDA) for EPC Project in the state Uttar Pradesh.

## Global Markets

The Shanghai Composite Index settled 2.8% lower after the close of trading, its worst end to a Lunar Year in its three-decade history.

Japan stocks were lower after the close on Thursday, as losses in the Paper & Pulp, Railway & Bus and Real Estate sectors led shares lower. The Nikkei 225 declined 0.98%.

Australia stocks were lower after the close on Thursday, as losses in the Industrials, Energy and Gold sectors led shares lower. The S&P/ASX 200 lost 0.63%.

DATE: 23/01/20

FII/DII	CASH	MTD	YTD
FII	+1352.13	+238.47	+238.47
DII	-984.56	-5032.53	-5032.53

## Sectoral gainers and losers

SECTOR	%CHANGE IN MARKETCAP	ADV	DEC
Industrial Gases & Fuels	3.35%	6	1
Infrastructure	2.17%	40	22
Trading	1.90%	13	7
Diversified	1.85%	15	5
Diamond & Jewellery	1.84%	9	5
Real Estate	1.83%	33	19
Telecom	1.44%	9	14
ETF	1.20%	43	13
Capital Goods	1.15%	45	36
Construction Materials	1.04%	36	18
Electricals	1.02%	16	8
Banks	0.99%	29	9
Agri	0.97%	26	34
Consumer Durables	0.97%	16	9
Insurance	0.93%	6	0
Power	0.89%	18	9
Manufacturing	0.81%	2	4
Automobile & Ancillaries	0.75%	65	46
Paper	0.73%	11	10
Plastic Products	0.70%	18	12
Footwear	0.67%	3	1
Logistics	0.67%	15	12
Finance	0.58%	68	46
Textiles	0.56%	56	50

## Stocks breakout on moving average

STOCKS	PRICE	30DMA
DOLLAR	147.30	140.69
PODDARHOUS	314.50	303.87
UJJIVAN	346.00	337.65
IBULHSGFIN	312.10	305.54



ULTRACEMCO EQ formed bullish engulfing candle on daily chart and settled near resistance level. The stock may surge higher in coming trade session.

**BUY ABOVE 4540 TARGETS 4585/4630/4676 SL 4494.60.**



BANDHANBNK EQ is being trading lower on daily chart and settled lower near the support level. The stock may give lower break down in coming trade session.

**SELL BELOW 473.50 TARGETS 468.75/464.05/459.30 SL 478.25.**



AMBUJACEM FUT is being trading on midterm sideways trend and hovering near resistance level with sustainable buy side volume. The stock fut may trade higher in coming trade session.

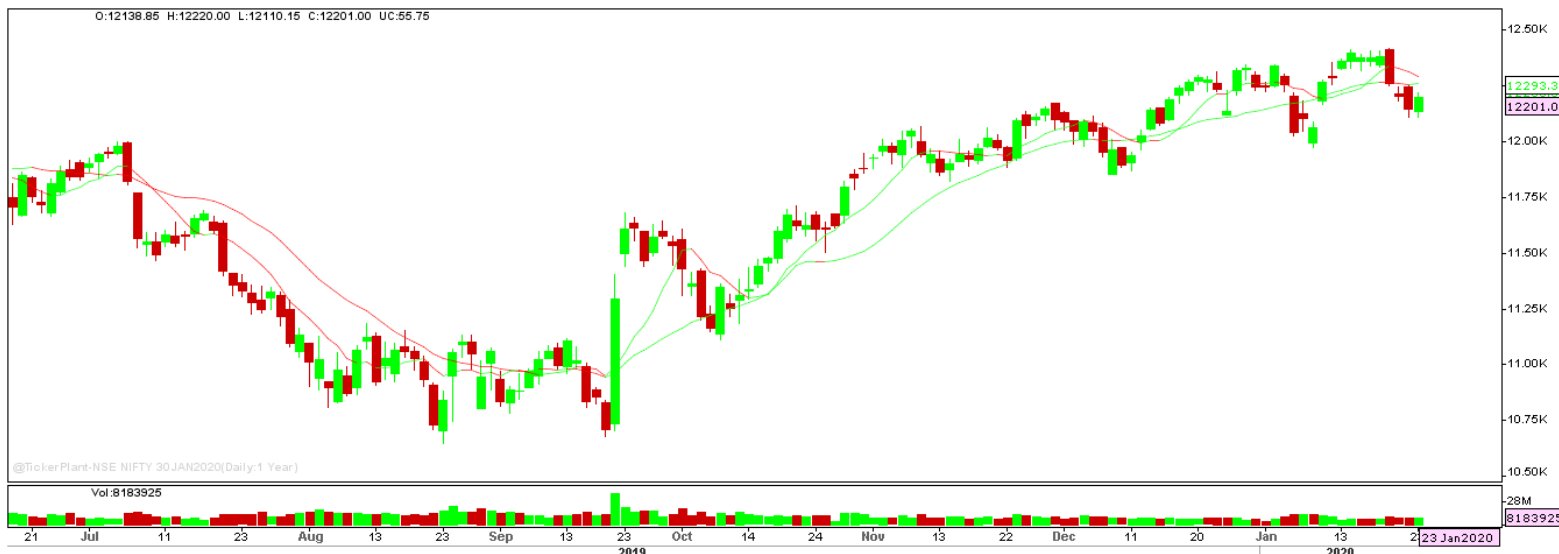
**BUY ABOVE 215.80 TARGETS 217/218.20 SL 214.60.**



ESCORTS EQ is being forming bullish consolidation on daily chart and settled forming bullish candle on daily chart. The stock may give bullish breakout in coming trade session.

**BUY ABOVE 716.90 TARGETS 731.25 SL 702.55.**

## Nifty Technical's



Nifty Future recovered on account of profit booking and settled higher on weekly expiry trade session to close at 12201. The next key support and resistance for the market is at 12100 and 12300.

## Bank Nifty Technical's



Bank nifty fut too surged higher forming bullish harami candle on daily chart to close at 31090.10. The next key support and resistance for the banking index is at 30700 and 31400.

Index	22-JAN-20	23-JAN-20	Change in OI	% Change
NIFTY	12877650	12597825	-279825	-2.17%

SCRIPS IN F&O BAN FOR TRADE  
YESBANK.

## Stocks at 52 Week High

Stocks	New 52 W/H	Previous High
AMARAJABAT	802.95	798.10
APOLLOHOSP	1699.90	1664.00
BALKRISIND	1137.80	1117.90
BHARTIARTL	526.00	523.75
DEEPAKNTR	406.20	400.00

## Stocks Approaching 52 Week High

Stocks	LTP	52W High
MANAPPURAM	183.95	185.00
BATAINDIA	1800.60	1814.00
TORNTPOWER	319.65	322.40
DABUR	489.80	494.40
ADANIENT	229.60	232.25

## Stocks rising continuously 2-3 days

Stocks	LTP
GRASIM	808.90
BHARTIARTL	523.65
SBIN	323.20
CANBK	220.70

## Stocks at 52 Week Low

Stocks	New 52 W/L	Previous Low
AGROPHOS	31.95	33.60
GOKEX	65.10	68.25
OIL	137.00	137.10
KARURVYSYA	52.90	53.85
TOUCHWOOD	76.60	80.60

## Stocks Approaching 52 Week Low

Stocks	LTP	52W Low
ITC	237.90	233.25
GILLETTE	6298.05	6169.00
GEPIL	684.05	669.60
MARICO	333.30	324.25
FRETAIL	339.95	323.35

## Stocks falling continuously 2-3 days

Stocks	LTP
UPL	542.20
CIPLA	465.15
TECHM	768.95
EICHERMOT	20915.70

## Event Calendar(20<sup>th</sup> to 25<sup>th</sup> JANUARY 2020)

20/01/20 (Mon)	21/01/20 (Tues)	22/01/20 (Wed)	23/01/20 (Thur)	24/01/20 (Fri)	25/01/20 (Sat)
RESULT: CANFIHOME, FEDERALBNK, HFCL, HINDZINC, JUSTDIAL, KOTAKBANK, ISEC.	RESULTS: GRANUELS, HAVELLS , HDFCAMC, ZEEL.	RESULT: ASIANPAINTS, CEATLTD, AXISBANK, APLLTD, RAYMOND, RBLBANK.	RESULT: BIOCON, CANBK, DBCORP, CHOLAFIN, HDFCLIFE, JMFINANCIL.	RESULT: BANKBARODA, JSWSTEEL, SUPREMEIND.	RESULT: DCBBANK, ICICIBANK, MUTHOOTCAP.

## DISCLAIMER

Trifid Research respects and values the Right to Privacy of each and every individual. We are esteemed by the relationship and by becoming our clients; you have a promise from our side that we shall remain loyal to all our clients and non-clients whose information resides with us. This Privacy Policy of Trifid Research applies to the current clients as well as former clients. Below are the word by word credentials of our Privacy Policy:

1. Your information, whether public or private, will not be sold, rented, exchanged, transferred or given to any company or individual for any reason without your consent.
2. The only use we will be bringing to your information will be for providing the services to you for which you have subscribed to us.
3. Your information given to us represents your identity with us. If any changes are brought in any of the fields of which you have provided us the information, you shall bring it to our notice by either calling us or dropping a mail to us.
4. In addition to the service provided to you, your information (mobile number, E-mail ID etc.) can be brought in use for sending you newsletters, surveys, contest information, or information about any new services of the company which will be for your benefit and while subscribing for our services, you agree that Trifid Research has the right to do so.
5. By subscribing to our services, you consent to our Privacy Policy and Terms of Use.
6. Trifid research does not guarantee or is responsible in any which way, for the trade execution of our recommendations, this is the sole responsibility of the client.
7. Due to the market's volatile nature, the trader may/ may not get appropriate opportunity to execute the trades at the mentioned prices and Trifid Research hold's no liability for any profit/ loss incurred whatsoever in this case.
8. It is the responsibility of the client to view the report timely from our Premium member section on our website: [www.trifidresearch.com](http://www.trifidresearch.com) and the same will also be mailed to this registered email id.
9. Trifid research does not hold any liability or responsibility of delay in mail delivery of reports, as this depends on our mail service provider's network infrastructure.
10. The clients can call us for any query related to buying/selling the securities, based on our recommendations.