

Domestic shares advanced for second straight session on Friday, on broad-based buying support. At close, the Sensex was up 226.79 points or 0.55% at 41613.19, and the Nifty was up 67.90 points or 0.56% at 12248.30.

Yes Bank, Tech Mahindra, Britannia Industries, UltraTech Cement and Axis Bank were among major gainers on the Nifty, while losers include Power Grid, Cipla, IndusInd Bank, Tata Motors and BPCL.

Global Markets

Japan's Suzuki Motor Corp is co-operating with Dutch authorities over their findings that its diesel vehicles had broken the country's emissions rules, and is required to respond to the probe by mid-February. European shares on Friday shrugged off worries over the coronavirus outbreak after the World Health Organization designated it an emergency for China but not yet for the rest of the world. STOXX 600 gained 1.1%.

INDEX	ADVANCE	DECLINE	UNCHANGED
NSE	1056	762	122
INDEX	ADVANCE	DECLINE	UNCHANGED
BSE	1374	1166	162

Gainers

LARGECAP	%CHANGE	MIDCAP	%CHANGE
YESBANK	+3.91%	JINDALSTEL	+4.97%
ULTRACEMCO	+2.58%	MRPL	+4.67%
BRITANNIA	+2.44%	CUMMINSIND	+4.53%
TECHM	+2.33%	NBCC	+2.88%
AXISBANK	+2.21%	BATAINDIA	+2.57%

Losers

LARGECAP	%CHANGE	MIDCAP	%CHANGE
POWERGRID	-2.45%	PNBHOUSING	-10.55%
CIPLA	-1.38%	EDELWEISS	-5.82%
INDUSINDBK	-1.06%	LICHSGFIN	-3.01%
TATAMOTORS	-0.80%	RBLBANK	-2.87%
BPCL	-0.64%	TATAGLOBAL	-2.20%

Nifty



Indian Markets

INDEX	VALUE	CHANGE	%CHANGE
SENSEX	41613.19	+226.79	+0.55%
NIFTY	12248.25	+67.90	+0.56%
NIFTYBANK	31241.75	+237.70	+0.77%
INDIA VIX	15.5600	-0.30	-1.86%

International Markets

INDEX	VALUE	CHANGE	%CHANGE
DOW	28989.73	-170.36	-0.58%
NASDAQ	9314.91	-87.57	-0.93%
FTSE	7585.98	+78.31	+1.04%
SHANGHAI	2976.53	-84.22	-2.75%
NIKKEI	23827.18	+31.74	+0.13%

OUR PREVIOUS CALLS UPDATE

Intraday super stars

Date	Stocks	Entry	Exit	P/L
24/01	BANDHANBNK(S)	473.50	478.25	-2006
24/01	ULTRACEMCO(L)	4540	4496.6	-2000

Multibagger

Date	Stock	Entry	Exit	P/L
24/01	AMBUJACEM(L)	215.80	214.60	-3000

Trifid special

Date	Stock	Entry	Exit	P/L
22/01	GUJGASLTD(L)	278	284.50	+6023

Stock Snippets

Strides Pharma Science's formulation facility at Alathur (Chennai), India underwent a USFDA inspection which concluded with Zero 483 observations.

Maruti Suzuki commenced exports of its chartbuster S-PRESSO to overseas markets. The consignments have left for global markets including parts of Asia, Latin America and Africa regions.

Godrej Properties launching a luxurious residential development at RK Studios, Chembur. The company is currently launching Collector's Edition 3 & 4 bedroom residences.

Alembic Pharmaceuticals has received final approval from the US Food & Drug Administration (USFDA) for its Abbreviated New Drug Application (ANDA) Bosentan Tablets, 62.5 mg and 125 mg.

Adani Gas share price fell 13 percent in early trade on January 24 after the Petroleum and Natural Gas Regulatory Board (PNGRB) sent notice to the company for not disclosing some crucial information.

Global Markets

Asian markets traded higher on Friday in Asia. Investor sentiment remained fragile, however, as death toll related to the Coronavirus in China continued to rise.

Japan stocks were higher after the close on Friday, as gains in the Paper & Pulp, Railway & Bus and Real Estate sectors led shares higher. The Nikkei 225 rose 0.13%.

Australia stocks were higher after the close on Friday, as gains in the Healthcare, Financials and IT sectors led shares higher. The S&P/ASX 200 gained 0.04%.

DATE: 24/01/20

FII/DII	CASH	MTD	YTD
FII	+659.11	+897.58	+897.58
DII	+417.96	-4614.57	-4614.57

Sectoral gainers and losers

SECTOR	%CHANGE IN MARKETCAP	ADV	DEC
Paper	1.60%	14	7
Construction Materials	1.58%	33	19
Electricals	1.17%	14	11
Infrastructure	1.13%	29	28
Miscellaneous	1.07%	27	20
Hospitality	1.04%	16	9
Capital Goods	0.97%	41	43
Consumer Durables	0.95%	20	6
FMCG	0.93%	25	17
Logistics	0.87%	18	11
Banks	0.84%	28	8
Textiles	0.83%	64	39
Media & Entertainment	0.83%	19	16
Finance	0.80%	66	46
Metals & Mining	0.79%	56	37
Chemicals	0.74%	67	39
Plastic Products	0.71%	17	12
Automobile & Ancillaries	0.54%	60	56
Real Estate	0.51%	33	21
ETF	0.41%	45	8
Healthcare	0.20%	50	42
Power	0.07%	18	11
Software & IT Services	-0.01%	49	37
Agri	-0.53%	24	33

Stocks breakout on moving average

STOCKS	PRICE	30DMA
CUMMINSIND	595.15	570.13
KHAITAN	20.85	20.08
CESC	752.25	741.88
GODREJIND	439.80	432.51



GRASIM EQ formed bullish double top formation on daily chart and settled near the resistance level. The stock may surge high in coming trade session.

BUY ABOVE 825.25 TARGETS 833.50/841.75/850 SL 817



HEROMOTOCO EQ is being forming reversal pattern on daily chart and settled near the immediate resistance level. The stock may give breakout in coming trade session.

BUY ABOVE 2480.55 TARGETS 2505.35/2530.15/2555 SL 2455.75



MARUTI FUT is being trading sideways and hovering near support level with sustainable sell side volume. The stock fut may trade lower in coming trade session.

SELL BELOW 7131 TARGETS 7101/7071 SL 7161.



ESCORTS EQ is being forming bullish consolidation on daily chart and settled forming bullish candle on daily chart. The stock may give bullish breakout in coming trade session.

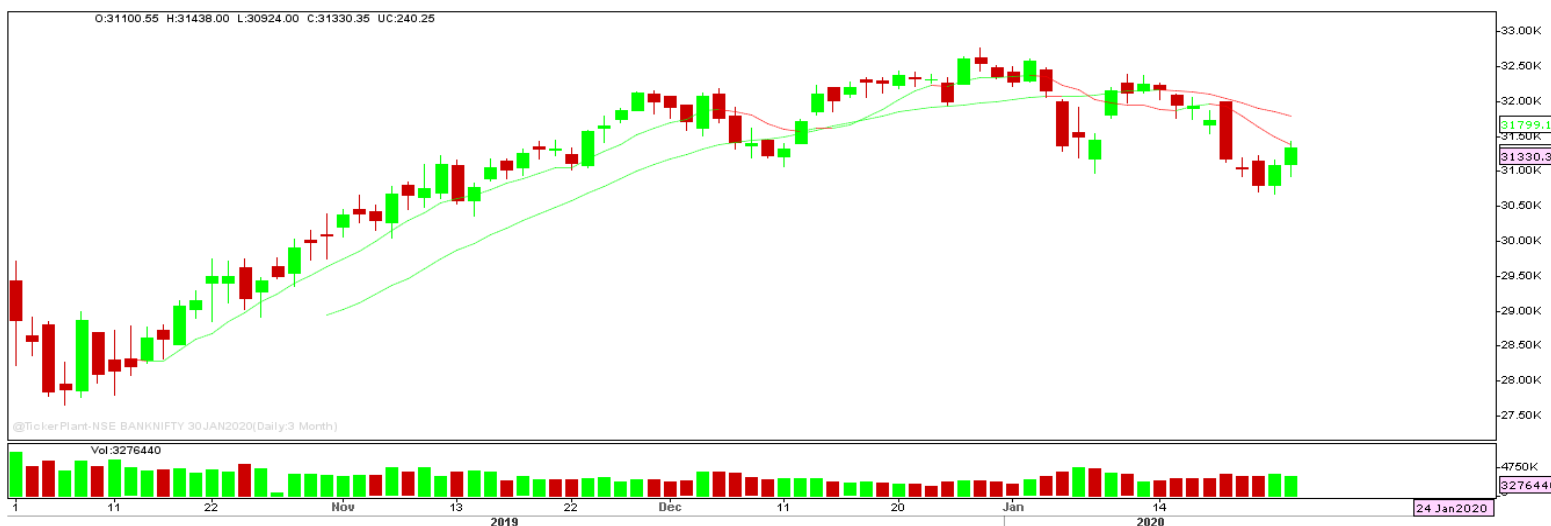
BUY ABOVE 716.90 TARGETS 731.25 SL 702.55.

Nifty Technical's



Nifty Future recovered on account of profit booking and settled higher on the last trading session of the week to close at 12271.60. The next key support and resistance for the market is at 12200 and 12360.

Bank Nifty Technical's



Bank nifty fut too surged higher forming bullish candle on daily chart to close at 31330.35. The next key support and resistance for the banking index is at 31000 and 31700.

Index	23-JAN-20	24-JAN-20	Change in OI	% Change
NIFTY	12597825	12394500	-203325	-1.61%

SCRIPS IN F&O BAN FOR TRADE
YESBANK.

Stocks at 52 Week High

Stocks	New 52 W/H	Previous High
AMARAJABAT	811	802.95
APLAPOLLO	1381.40	1370
AUBANK	1097.90	1008
BHARTIARTL	527.35	526.00
DABUR	501.90	494.40

Stocks Approaching 52 Week High

Stocks	LTP	52W High
JSPL	188.95	191.20
BAJAJFINSV	9633.75	9764.35
HCLTECH	607.70	618
HDFC	2450.75	2499.90
LTI	1960.80	2003

Stocks rising continuously 2-3 days

Stocks	LTP
ESCORTS	723.60
SBIN	324.05
GRASIM	822.00
BHARTIARTL	524.25

Stocks at 52 Week Low

Stocks	New 52 W/L	Previous Low
AGROPHOS	30.40	31.95
FRETAIL	323.20	323.35
TOUCHWOOD	72.80	76.60
-	-	-
-	-	-

Stocks Approaching 52 Week Low

Stocks	LTP	52W Low
ITC	238.15	233.25
GILLETTE	6295.55	6169.00
WIPRO	247.60	232.20
MARICO	340.55	324.25
HAVELLS	622.90	588.30

Stocks falling continuously 2-3 days

Stocks	LTP
CIPLA	458.85
INDUSINDBK	1316.10
DRREDDY	3031.40
TCS	2183.40

Event Calendar(27th JANUARY to 01st FEBRUARY 2020)

27/01/20 (Mon)	28/01/20 (Tues)	29/01/20 (Wed)	30/01/20 (Thur)	31/01/20 (Fri)	01/02/20 (Sat)
RESULT: DRREDDY,CCL, HDFC, JKPAPER, TORNTPHARM.	RESULTS: CGPOWER, CUMMINSIND, KRBL, MASTEK, MARUTI, TATACOFFEE.	RESULT: APTECH, BIRLACORP, ESCORTS, IDFCFIRSTB, QUESS, TATAPOWER, NIITTECH, ORIENTCEM, NILKAMAL.	RESULT: BAJAJ-AUTO, DABUR, GSFC, NOCIL, MARICO, LICHSGFIN, IOC, TATAMOTORS.	RESULT: ABCAPITAL, BIRLASOFT, CASTROLIND, HINDUNILVR, ITC, SBIN, SUNPHARMA, TECHM,VGUARD, ECO DATA: FEDERAL FISCIAL DEFICIT.	RESULT: AMARAJABAT, KARURVYSYA.

DISCLAIMER

Trifid Research respects and values the Right to Privacy of each and every individual. We are esteemed by the relationship and by becoming our clients; you have a promise from our side that we shall remain loyal to all our clients and non-clients whose information resides with us. This Privacy Policy of Trifid Research applies to the current clients as well as former clients. Below are the word by word credentials of our Privacy Policy:

1. Your information, whether public or private, will not be sold, rented, exchanged, transferred or given to any company or individual for any reason without your consent.
2. The only use we will be bringing to your information will be for providing the services to you for which you have subscribed to us.
3. Your information given to us represents your identity with us. If any changes are brought in any of the fields of which you have provided us the information, you shall bring it to our notice by either calling us or dropping a mail to us.
4. In addition to the service provided to you, your information (mobile number, E-mail ID etc.) can be brought in use for sending you newsletters, surveys, contest information, or information about any new services of the company which will be for your benefit and while subscribing for our services, you agree that Trifid Research has the right to do so.
5. By subscribing to our services, you consent to our Privacy Policy and Terms of Use.
6. Trifid research does not guarantee or is responsible in any which way, for the trade execution of our recommendations, this is the sole responsibility of the client.
7. Due to the market's volatile nature, the trader may/ may not get appropriate opportunity to execute the trades at the mentioned prices and Trifid Research hold's no liability for any profit/ loss incurred whatsoever in this case.
8. It is the responsibility of the client to view the report timely from our Premium member section on our website: www.trifidresearch.com and the same will also be mailed to this registered email id.
9. Trifid research does not hold any liability or responsibility of delay in mail delivery of reports, as this depends on our mail service provider's network infrastructure.
10. The clients can call us for any query related to buying/selling the securities, based on our recommendations.