

Key domestic benchmarks snapped two-day winning streak amid negative global cues. Global stock markets were under pressure as investors appeared to be wary about the fast-spreading coronavirus, which started in the China's Wuhan city. Investors also turned cautious ahead of the Union Budget on Saturday, 1 February 2020. Among sectors, metal index fell 3 percent followed by bank, energy, FMCG, infra and IT, while pharma index gained over 1 percent.

Global Markets

U.S. drugmaker AbbVie's \$63 billion tie-up with Allergan is getting help from Nestle and AstraZeneca buying up products the Irish-domiciled company is shedding to placate regulators. European stock markets traded strongly lower Monday, in a broad risk off move on the back of the sharp escalation of Chinese measures to curtail the spread of the deadly coronavirus. DAX dropped 223 points, or 1.7%.

INDEX	ADVANCE	DECLINE	UNCHANGED
NSE	729	1067	377
INDEX	ADVANCE	DECLINE	UNCHANGED
BSE	1058	1494	163

Gainers

LARGECAP	%CHANGE	MIDCAP	%CHANGE
DRREDDY	+5.56%	SUNPHARMA	+6.67%
M&M	+1.87%	PIDILITIND	+2.49%
CIPLA	+1.17%	RBLBANK	+1.97%
ULTRACEMCO	+0.93%	IGL	+1.91%
EICHERMOT	+0.77%	ADANIPOWER	+1.81%

Losers

LARGECAP	%CHANGE	MIDCAP	%CHANGE
VEDL	-4.84%	JINDALSTEL	-5.42%
TATASTEEL	-4.73%	PNBHOUSING	-4.93%
JSWSTEEL	-4.25%	RELINFRA	-4.78%
INDUSINDBK	-3.12%	M&MFIN	-4.45%
HINDALCO	-2.43%	CANBK	-3.86%

Nifty



Indian Markets

INDEX	VALUE	CHANGE	%CHANGE
SENSEX	41155.12	-458.07	-1.10%
NIFTY	12119.00	-129.25	-1.06%
NIFTYBANK	30837.40	-404.35	-1.29%
INDIA VIX	17.2600	+1.70	+10.92%

International Markets

INDEX	VALUE	CHANGE	%CHANGE
DOW	28989.73	-170.36	-0.58%
NASDAQ	9314.91	-87.57	-0.93%
FTSE	7394.59	-191.39	-2.52%
SHANGHAI	2976.53	-84.22	-2.75%
NIKKEI	23343.51	-483.67	-2.03%

OUR PREVIOUS CALLS UPDATE

Intraday super stars

Date	Stocks	Entry	Exit	P/L
27/01	HEROMOTOCO(L)	2480.55	2455.7	-1999
27/01	GRASIM(L)	825.25	833.50	+1999

Multibagger

Date	Stock	Entry	Exit	P/L
27/01	MARUTI(S)	7131	7071	+6000

Trifid special

Date	Stock	Entry	Exit	P/L
24/01	ESCORTS(L)	716.90	731.25	+6005

Stock Snippets

BSE has signed a licensing agreement with Intercontinental Exchange.

Shares of **Biocon** lost 2.8 percent after receiving five observations from the US health regulator for Bengaluru unit. The pharma company informed exchanges that the US Food and Drug Administration conducted a pre-approval inspection (PAI) and GMP inspection of the API manufacturing facility.

Lupin Limited announced the successful completion of the inspection carried out by the UK Medicines and Healthcare products Regulatory Agency (MHRA), the regulatory agency of the United Kingdom (UK) at its three manufacturing units in Pithampur (India).

Cipla Ltd., informed the exchanges Friday post market hours that the United States Food and Drug Administration (USFDA) conducted a cGMP inspection at the company's API manufacturing facility in Bommasandra, Bangalore from January 20, 2020 to January 24, 2020

BSE has signed a licensing agreement with Intercontinental Exchange.

Global Markets

Japan stocks were lower after the close on Monday, as losses in the Paper & Pulp, Railway & Bus and Real Estate sectors led shares lower. The Nikkei 225 fell 2.03%.

Israel stocks were lower after the close on Sunday, as losses in the Oil & Gas, Communication and Technology sectors led shares lower. The TA 35 declined 0.92%.

Saudi Arabia stocks were lower after the close on Sunday, as losses in the Agriculture & Food, Transport and Cement sectors led shares lower. The Tadawul All Share declined 0.71%

DATE: 27/01/20

FII/DII	CASH	MTD	YTD
FII	-438.85	+458.73	+458.73
DII	+10.51	-4604.06	-4604.06

Sectoral gainers and losers

SECTOR	%CHANGE IN MARKETCAP	ADV	DEC
Plastic Products	1.46%	9	20
Healthcare	1.21%	63	33
Logistics	0.59%	13	16
Construction Materials	0.57%	25	27
Chemicals	0.53%	53	50
Consumer Durables	0.18%	12	15
Media & Entertainment	-0.29%	13	17
Textiles	-0.34%	38	67
Automobile & Ancillaries	-0.35%	38	77
Miscellaneous	-0.44%	22	22
ETF	-0.56%	21	34
Software & IT Services	-0.57%	37	51
Real Estate	-0.67%	24	31
FMCG	-0.83%	11	31
Hospitality	-0.83%	7	19
Power	-0.85%	10	18
Infrastructure	-0.89%	20	43
Capital Goods	-0.97%	35	51
Finance	-1.02%	43	72
Paper	-1.12%	8	15
Agri	-1.28%	13	50
Banks	-1.52%	5	33
Telecom	-1.91%	3	20
Metals & Mining	-2.75%	23	71

Stocks breakout on moving average

STOCKS	PRICE	30DMA
VRLOG	273.60	269
TATAMETALI	634.20	628.41
CONCOR	570.20	565.77
AXISBANK	740.25	739.65



TATAMOTORS EQ is being forming reversal candle on daily chart and settled near the immediate support level. The stock may give breakdown in coming trade session.

SELL BELOW 180.20 TARGETS 178.40/176.60/174.80 SL 182



ITC EQ is trading on its sell trend and settled near the support level. The stock may give lower breakdown in coming trade session and trade lower.

SELL BELOW 234.30 TARGETS 231.95/229.60/227.25 SL 236.65



TCS FUT is being trading sideways and hovering near support level with sustainable sell side volume. The stock fut may trade lower in coming trade session.

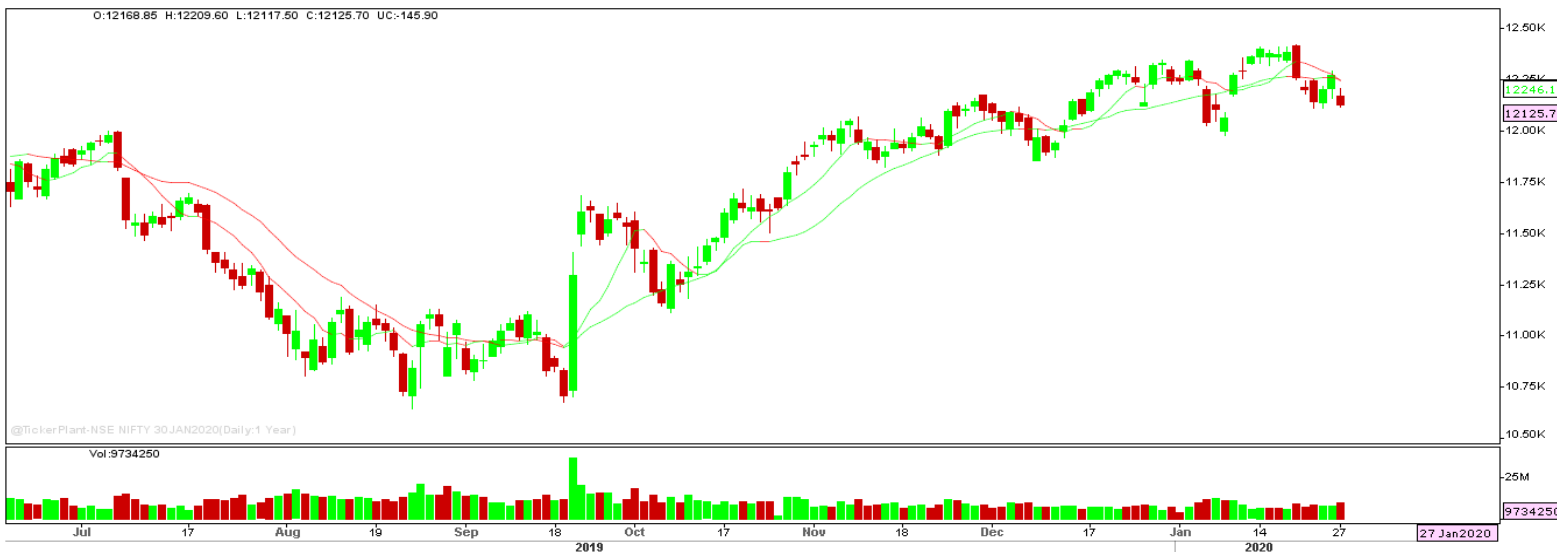
SELL BELOW 2160 TARGETS 2148/2136 SL 2172



CUMMINSIND EQ is being forming bullish consolidation on daily chart and settled forming bullish candle on daily chart. The stock may give bullish breakout in coming trade session.

BUY ABOVE 608.95 TARGETS 621.15 SL 596.75

Nifty Technical's



Nifty Future tanked forming bearish hammer candle on daily chart to close at 12125.70. The next key support and resistance for the market is at 11975 and 12250.

Bank Nifty Technical's



Bank nifty fut too tanked forming bearish hammer candle on daily chart to close at 30879.05. The next key support and resistance for the banking index is at 30500 and 31300.

Index	24-JAN-20	27-JAN-20	Change in OI	% Change
NIFTY	12394500	12369675	-24825	-0.20%

SCRIPS IN F&O BAN FOR TRADE
YESBANK.

Stocks at 52 Week High

Stocks	New 52 W/H	Previous High
ADANIENT	236.45	232.40
APLAPOLLO	2219	2072.85
AUBANK	1105	1097.90
BATAINDIA	1866	1850.40
DABUR	505.85	501.90

Stocks Approaching 52 Week High

Stocks	LTP	52W High
PIDILITIND	1476.70	1493.50
SRF	3673.60	3726.75
NESTLEIND	15666.05	15850
TATACHEM	749.65	762
BHARTIARTL	514.40	527.35

Stocks rising continuously 2-3 days

Stocks	LTP
ESCORTS	734.25
M&M	578.30
ULTRACEMCO	4676.95
TECHM	791.50

Stocks at 52 Week Low

Stocks	New 52 W/L	Previous Low
AGROPHOS	30.40	30.40
MMP	100.85	105.05
-	-	-
-	-	-
-	-	-

Stocks Approaching 52 Week Low

Stocks	LTP	52W Low
ITC	234.60	233.25
GILLETTE	6273.20	6169.00
WIPRO	245.35	232.20
MARICO	338.40	324.25
HAVELLS	622.15	588.30

Stocks falling continuously 2-3 days

Stocks	LTP
TATSTEEL	462.45
INDUSINDBK	1271.20
HDFCBANK	1213.50
POWERMECH	713.30

Event Calendar(27th JANUARY to 01st FEBRUARY 2020)

27/01/20 (Mon)	28/01/20 (Tues)	29/01/20 (Wed)	30/01/20 (Thur)	31/01/20 (Fri)	01/02/20 (Sat)
RESULT: DRREDDY,CCL PRODUCTS,HDFC JKPAPER, TORNTPHARM	RESULTS: CGPOWER, CUMMINSIND, KRBL,MASTEK, MARUTI, TATACOFFEE	RESULT: APTECH,BIRLA CORP,ESCORTS, IDFCFIRSTB,QUESS TATAPOWER, NIITTECH,ORIENT CEMENT,NILKAMAL,	RESULT: BAJAJ-AUTO DABUR,GSFC, NOCIL,MARICO, LICHSGFIN,IOC TATAMOTORS	RESULT: ABCAPITAL, BIRLASOFT, CASTROL,HIND- UNILVR,ITC, SBIN,SUNPHARMA TECHM,VGUARD ECO DATA: FEDERAL FISCIAL DEFICIT	RESULT: AMARAJABAT, KARURVYSYA

DISCLAIMER

Trifid Research respects and values the Right to Privacy of each and every individual. We are esteemed by the relationship and by becoming our clients; you have a promise from our side that we shall remain loyal to all our clients and non-clients whose information resides with us. This Privacy Policy of Trifid Research applies to the current clients as well as former clients. Below are the word by word credentials of our Privacy Policy:

1. Your information, whether public or private, will not be sold, rented, exchanged, transferred or given to any company or individual for any reason without your consent.
2. The only use we will be bringing to your information will be for providing the services to you for which you have subscribed to us.
3. Your information given to us represents your identity with us. If any changes are brought in any of the fields of which you have provided us the information, you shall bring it to our notice by either calling us or dropping a mail to us.
4. In addition to the service provided to you, your information (mobile number, E-mail ID etc.) can be brought in use for sending you newsletters, surveys, contest information, or information about any new services of the company which will be for your benefit and while subscribing for our services, you agree that Trifid Research has the right to do so.
5. By subscribing to our services, you consent to our Privacy Policy and Terms of Use.
6. Trifid research does not guarantee or is responsible in any which way, for the trade execution of our recommendations, this is the sole responsibility of the client.
7. Due to the market's volatile nature, the trader may/ may not get appropriate opportunity to execute the trades at the mentioned prices and Trifid Research hold's no liability for any profit/ loss incurred whatsoever in this case.
8. It is the responsibility of the client to view the report timely from our Premium member section on our website: www.trifidresearch.com and the same will also be mailed to this registered email id.
9. Trifid research does not hold any liability or responsibility of delay in mail delivery of reports, as this depends on our mail service provider's network infrastructure.
10. The clients can call us for any query related to buying/selling the securities, based on our recommendations.