

Domestic shares ended lower after a volatile trade on Tuesday. Global stock markets were under pressure after the death toll and incidence rate of the Chinese coronavirus escalated over the weekend. Investors also turned cautious ahead of the Union Budget on Saturday, 1 February 2020.

Among sectors, metal index shed over 2 percent followed by infra, auto, bank, and energy.

Global Markets

Renault's board is set to meet early on Tuesday afternoon to discuss naming Luca de Meo, formerly the head of Volkswagen's Seat brand. European stocks pared early gains alongside U.S. index futures on Tuesday amid international efforts to curb the SARS-like virus from spreading. The yuan steadied and Treasuries turned higher.

INDEX	ADVANCE	DECLINE	UNCHANGED
NSE	618	1165	363
INDEX	ADVANCE	DECLINE	UNCHANGED
BSE	990	1542	174

Gainers

LARGECAP	%CHANGE	MIDCAP	%CHANGE
BPCL	+2.82%	MPHASIS	+3.86%
HDFC	+1.49%	MGL	+3.63%
BAJFINANCE	+1.17%	CASTROLIND	+2.98%
SUNPHARMA	+1.00%	SRF	+2.48%
HDFCBANK	+0.82%	NAUKRI	+2.42%

Losers

LARGECAP	%CHANGE	MIDCAP	%CHANGE
BHARTIARTL	-4.50%	TORNTPHARM	-5.46%
VEDL	-4.47%	JUBLFOOD	-3.76%
TATASTEEL	-3.50%	CANBK	-3.21%
TAMAMOTORS	-3.35%	GLENMARK	-3.16%
JSWSTEEL	-2.87%	CUMMINSIND	-2.79%

Nifty



Indian Markets

INDEX	VALUE	CHANGE	%CHANGE
SENSEX	40966.86	-188.26	-0.46%
NIFTY	12055.80	-63.20	-0.52%
NIFTYBANK	30761.40	-76.00	-0.25%
INDIA VIX	17.2975	+0.1225	+0.71%

International Markets

INDEX	VALUE	CHANGE	%CHANGE
DOW	28535.80	-453.93	-1.57%
NASDAQ	9139.31	-175.60	-1.89%
FTSE	7425.62	+13.57	+0.18%
SHANGHAI	2976.53	-84.22	-2.75%
NIKKEI	23215.71	-127.80	-0.55%

OUR PREVIOUS CALLS UPDATE

Intraday super stars

Date	Stocks	Entry	Exit	P/L
28/01	ITC(S)	234.30	231.95	+2005
28/01	TATAMOTORS(S)	180.20	176.6	+3995

Multibagger

Date	Stock	Entry	Exit	P/L
28/01	TCS(S)	2160	2172	-3000

Trifid special

Date	Stock	Entry	Exit	P/L
28/01	CUMMINSIND(L)	608.95	596.75	-6010

Stock Snippets

State-owned **Coal India** has received green clearances for 17 mining projects, a move that will enable the world's largest coal miner to achieve one-billion-tonne production target.

Cipla has received the Establishment Inspection Report (EIR), indicating closure of the inspection, following the inspection by the United States Food and Drug Administration (USFDA) at the Invagen (US) manufacturing facility from December 2, 2019 to December 6, 2019.

Maruti announces price increase. Co says price change varies across models & ranges from 0% to 4.7% (Ex-Showroom - Delhi); new prices are effective from January 27.

IndiGo appoints Ronojoy Dutta (earlier appointed as CEO) as Whole Time Director (Additional Director) & CEO with immediate effect.

Dewan Housing Finance Corporation (DHFL) share price locked at 5 percent lower circuit on January 28 after Enforcement Directorate (ED) arrested Kapil Wadhawan, the promoter of company.

Global Markets

Asian stocks looked set for further losses Tuesday as concern over the economic and human impact of China's deadly coronavirus rattled global markets. Treasuries rallied and the yen held gains.

Japan stocks were lower after the close on Tuesday, as losses in the Paper & Pulp, Railway & Bus and Real Estate sectors led shares lower. The Nikkei 225 lost 0.55%.

Australia stocks were lower after the close on Tuesday, as losses in the Energy, Resources and Metals & Mining sectors led shares lower. The S&P/ASX 200 lost 1.35%.

DATE: 28/01/20

FII/DII	CASH	MTD	YTD
FII	-1357.56	+898.83	+898.83
DII	+711.70	-3892.36	-3892.36

Sectoral gainers and losers

SECTOR	%CHANGE IN MARKETCAP	ADV	DEC
Alcohol	7.81%	8	2
Plastic Products	1.81%	12	15
Finance	0.63%	44	74
Ship Building	0.46%	1	1
Software & IT Services	0.25%	28	58
Consumer Durables	0.20%	11	14
Miscellaneous	0.14%	18	29
Industrial Gases & Fuels	-0.01%	3	4
Insurance	-0.04%	3	3
Logistics	-0.16%	17	13
Chemicals	-0.17%	36	69
Diversified	-0.17%	4	16
Footwear	-0.18%	2	3
Healthcare	-0.21%	42	57
Real Estate	-0.24%	20	35
Banks	-0.26%	9	31
Agri	-0.29%	15	47
Manufacturing	-0.38%	0	6
Electricals	-0.45%	6	18
Infrastructure	-0.63%	17	35
Retailing	-0.65%	3	11
Construction Materials	-0.68%	18	38
FMCG	-0.73%	13	29
Trading	-0.78%	5	15
ETF	-0.87%	4	50

Stocks breakout on moving average

STOCKS	PRICE	30DMA
MCDOWELL-N	655.90	585.52
PIONDIST	129.25	121.06
GLOBUSSPR	142.50	136.31
CASTROLIND	132.90	129.82



OIL EQ is being trading on its long term sell trend and settled near the support level. The stock may fall further in coming trade session.

SELL BELOW 137 TARGETS 135.60/134.20/132.80 SL 138.35.



DCBBANK EQ is trading on its sell trend and settled near the support level. The stock may give lower breakdown in coming trade session and trade lower.

SELL BELOW 177 TARGETS 175.20/173.40/171.60 SL 178.80.



CIPLA FUT is being trading sideways and hovering near resistance level with sustainable buy side volume. The stock fut may trade higher in coming trade session.

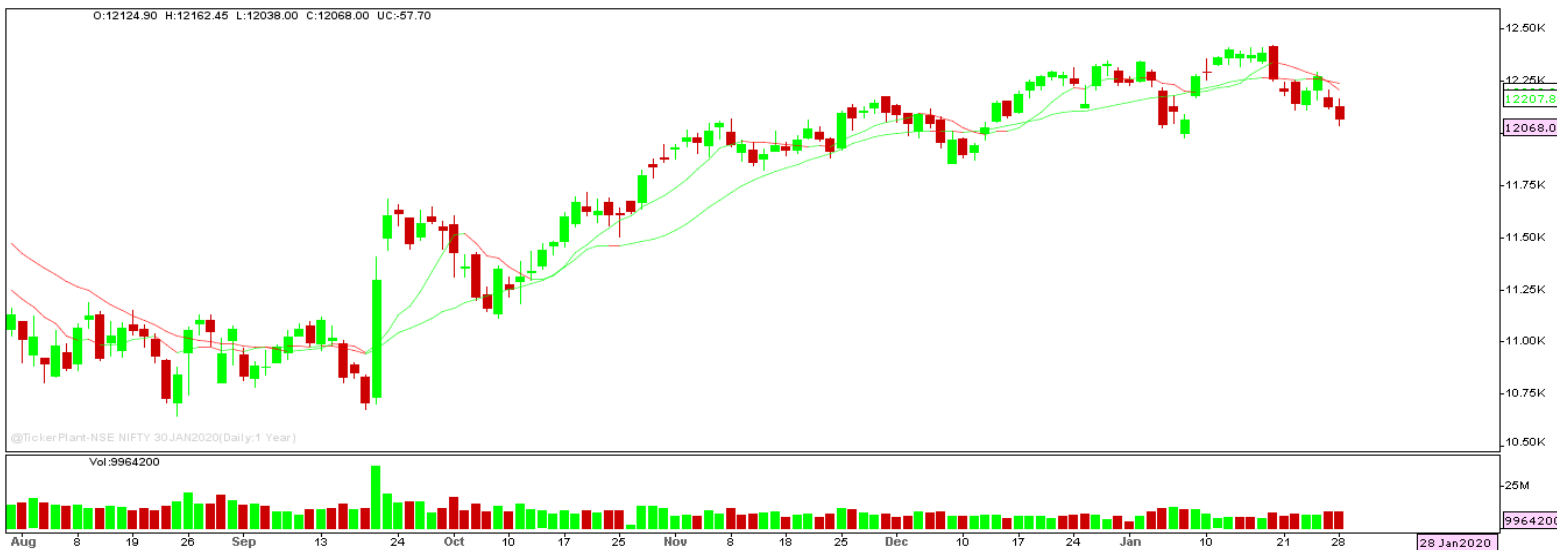
BUY ABOVE 468.75 TARGETS 471.35/474 SL 466.15



RECLTD EQ is being trading higher from couple of trading sessions and settled higher forming bullish hammer candle on daily chart. The stock may surge higher in coming trade session.

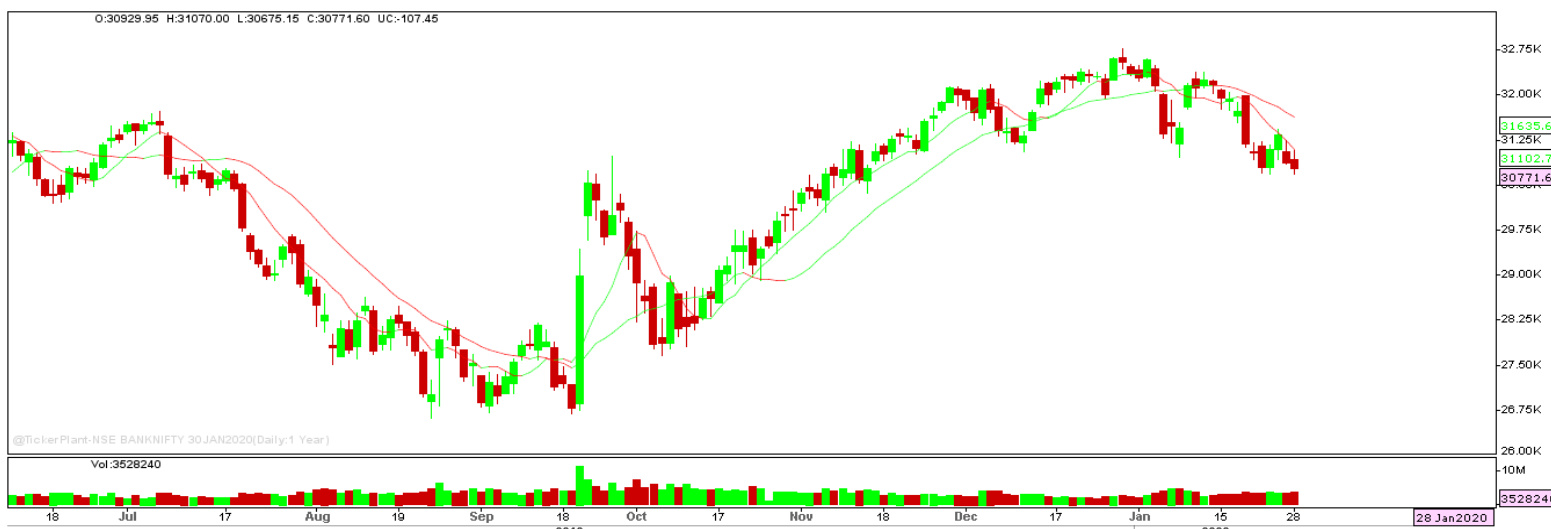
BUY ABOVE 146.20 TARGET 149.15 SL 143.30.

Nifty Technical's



Nifty Future tanked forming bearish candle on daily chart to close at 12068. The next key support and resistance for the market is at 11975 and 12165.

Bank Nifty Technical's



Bank nifty fut too tanked forming bearish candle on daily chart to close at 30771.60. The next key support and resistance for the banking index is at 30500 and 30950.

Index	27-JAN-20	28-JAN-20	Change in OI	% Change
NIFTY	12369675	10895025	-1474650	-11.92%

SCRIPS IN F&O BAN FOR TRADE
YESBANK.

Stocks at 52 Week High

Stocks	New 52 W/H	Previous High
AMBER	1485.00	1410.00
COROMANDEL	624.00	619.00
DEEPAKNTR	409.60	406.20
DIVISLAB	1951.80	1935.00
IGL	517.85	508.95

Stocks Approaching 52 Week High

Stocks	LTP	52W High
GSPL	262.50	263.60
SUPREMEIND	1350.20	1367.80
BAJAJFINSV	9631.30	9764.35
MANAPPURAM	188.50	191.40
BERGEPAIN	560.75	569.50

Stocks rising continuously 2-3 days

Stocks	LTP
TECHM	794.25
BPCL	480.95
BAJFINANCE	4213.00
SUNPHARMA	452.90

Stocks at 52 Week Low

Stocks	New 52 W/L	Previous Low
AGROPHOS	27.50	28.90
ITC	230.50	233.25
KARURVYSYA	51.50	52.70
MMP	95.50	100.85
PAISALO	260.15	291.00

Stocks Approaching 52 Week Low

Stocks	LTP	52W Low
GILLETTE	6273.65	6169.00
HINDZINC	198.75	193.05
GEPIL	691.15	669.60
MARICO	335.10	324.25
FRETAIL	334.20	323.20

Stocks falling continuously 2-3 days

Stocks	LTP
VEDL	142.20
TATAMOTORS	176.10
TATASTEEL	446.25
JSWSTEEL	255.25

Event Calendar(27th JANUARY to 01st FEBRUARY 2020)

27/01/20 (Mon)	28/01/20 (Tues)	29/01/20 (Wed)	30/01/20 (Thur)	31/01/20 (Fri)	01/02/20 (Sat)
RESULT: DRREDDY,CCL PRODUCTS,HDFC JKPAPER, TORNTPHARM	RESULTS: CGPOWER, CUMMINSIND, KRBL,MASTEK, MARUTI, TATACOFFEE	RESULT: APTECH,BIRLA CORP,ESCORTS, IDFCFIRSTB,QUESS TATAPOWER, NIITTECH,ORIENT CEMENT,NILKAMAL,	RESULT: BAJAJ-AUTO DABUR,GSFC, NOCIL,MARICO, LICHSGFIN,IOC TATAMOTORS	RESULT: ABCAPITAL, BIRLASOFT, CASTROL,HIND- UNILVR,ITC, SBIN,SUNPHARMA TECHM,VGUARD ECO DATA: FEDERAL FISCIAL DEFICIT	RESULT: AMARAJABAT, KARURVYSYA

DISCLAIMER

Trifid Research respects and values the Right to Privacy of each and every individual. We are esteemed by the relationship and by becoming our clients; you have a promise from our side that we shall remain loyal to all our clients and non-clients whose information resides with us. This Privacy Policy of Trifid Research applies to the current clients as well as former clients. Below are the word by word credentials of our Privacy Policy:

1. Your information, whether public or private, will not be sold, rented, exchanged, transferred or given to any company or individual for any reason without your consent.
2. The only use we will be bringing to your information will be for providing the services to you for which you have subscribed to us.
3. Your information given to us represents your identity with us. If any changes are brought in any of the fields of which you have provided us the information, you shall bring it to our notice by either calling us or dropping a mail to us.
4. In addition to the service provided to you, your information (mobile number, E-mail ID etc.) can be brought in use for sending you newsletters, surveys, contest information, or information about any new services of the company which will be for your benefit and while subscribing for our services, you agree that Trifid Research has the right to do so.
5. By subscribing to our services, you consent to our Privacy Policy and Terms of Use.
6. Trifid research does not guarantee or is responsible in any which way, for the trade execution of our recommendations, this is the sole responsibility of the client.
7. Due to the market's volatile nature, the trader may/ may not get appropriate opportunity to execute the trades at the mentioned prices and Trifid Research hold's no liability for any profit/ loss incurred whatsoever in this case.
8. It is the responsibility of the client to view the report timely from our Premium member section on our website: www.trifidresearch.com and the same will also be mailed to this registered email id.
9. Trifid research does not hold any liability or responsibility of delay in mail delivery of reports, as this depends on our mail service provider's network infrastructure.
10. The clients can call us for any query related to buying/selling the securities, based on our recommendations.