

Key barometers ended with modest gains after a fairly range bound session on Wednesday. The Nifty managed to close above the 12,100 mark. Recovery in global stock markets boosted sentiment. However, gains were capped ahead of January F&O expiry on Thursday and the Union Budget on Saturday.

Tata Motors, Bajaj Finance, Bharti Infratel, Nestle and Bajaj Finserv were among major gainers on the Nifty, while losers were Eicher Motors, TCS, Yes Bank, Dr Reddy's Labs and HDFC.

Global Markets

The chief executive of Robert Bosch, the world's biggest auto components supplier, warned that coronavirus could impact its global supply chain, which is heavily dependent on China. European stock markets headed higher helped by a strong close on Wall Street overnight, and some better-than-expected earnings and economic data both in Europe and stateside. The Euro Stoxx 50 index rose 8 points, or 0.2%.

INDEX	ADVANCE	DECLINE	UNCHANGED
NSE	965	808	377
INDEX	ADVANCE	DECLINE	UNCHANGED
BSE	1268	1246	165

Gainers

LARGECAP	%CHANGE	MIDCAP	%CHANGE
TATAMOTORS	+6.81%	M&MFIN	+4.86%
BAJFINANCE	+5.06%	RELINFRA	+4.79%
INFRATEL	+3.35%	ESCORTS	+2.79%
BAJAJFINSV	+3.04%	BERGEPAIN	+2.18%
NESTLEIND	+2.86%	CUMMINSIND	+2.18%

Losers

LARGECAP	%CHANGE	MIDCAP	%CHANGE
EICHERMOT	-4.51%	DHFL	-4.98%
YESBANK	-1.44%	DISHTV	-3.39%
DRREDDY	-1.38%	GLENMARK	-2.70%
TCS	-1.36%	JSWENERGY	-1.27%
HDFC	-1.04%	RBLBANK	-1.22%

Nifty



Indian Markets

INDEX	VALUE	CHANGE	%CHANGE
SENSEX	41198.66	+231.80	+0.57%
NIFTY	12129.50	+73.70	+0.61%
NIFTYBANK	30877.00	+115.60	+0.38%
INDIA VIX	16.4025	-0.90	-5.17%

International Markets

INDEX	VALUE	CHANGE	%CHANGE
DOW	28722.85	+187.05	+0.66%
NASDAQ	9269.68	+130.37	+1.43%
FTSE	7490.55	+9.86	+0.13%
SHANGHAI	2976.53	-84.22	-2.75%
NIKKEI	23379.40	+163.90	+0.71%

OUR PREVIOUS CALLS UPDATE

Intraday super stars

Date	Stocks	Entry	Exit	P/L
29/01	DCBBANK(S)	177	175.20	+2033
29/01	OIL(S)	137	138.35	-1970

Multibagger

Date	Stock	Entry	Exit	P/L
29/01	CIPLA(L)	468.75	-	UNEX

Trifid special

Date	Stock	Entry	Exit	P/L
28/01	CUMMINSIND(L)	608.95	596.75	-6010

Stock Snippets

Tata Consultancy Services has strengthened and expanded its strategic partnership with ABN AMRO to help the latter build a new, scalable technology core that will increase its innovation velocity and support its digital ambitions.

Va Tech Wabag share price rose 4 percent on January 29 after company secured multiple orders worth Rs 760 crore in India, Switzerland and Singapore.

Alembic Pharmaceuticals has received final approvals from the US Food & Drug Administration (USFDA) for its Abbreviated New Drug Applications (ANDAs) Azithromycin Tablets USP, 250 mg and 500 mg.

Infosys completed the divestment of its shares in Unsilo A/S for a total consideration of approximately USD 0.8 million.

Dr Reddy's informed the exchanges today that the audit of the company's API manufacturing plant at Srikakulam, Andhra Pradesh (CTO VI), by the USFDA, has been completed on January 28, 2020. Further, the company informed that it has been issued a Form 483 with 5 (five) observations.

Global Markets

Japan stocks were higher after the close on Wednesday, as gains in the Paper & Pulp, Railway & Bus and Real Estate sectors led shares higher. The Nikkei 225 added 0.71%.

Chinese stock futures in Singapore rebounded from two days of losses to rise 1.79%, the biggest gain in almost seven weeks.

Australia stocks were higher after the close on Wednesday, as gains in the IT, Healthcare and Industrials sectors led shares higher. The S&P/ASX 200 gained 0.53%

DATE: 28/01/20

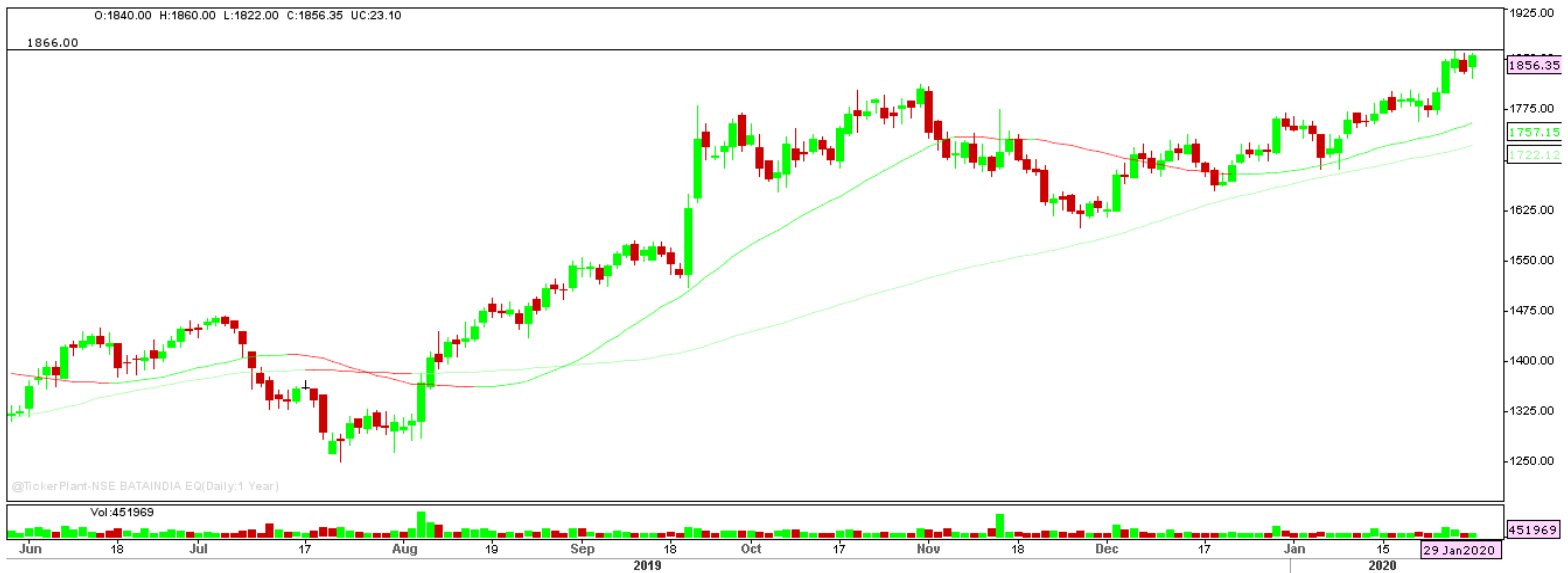
FII/DII	CASH	MTD	YTD
FII	-1014.27	-115.44	-115.44
DII	+1520.90	-2371.46	-2371.46

Sectoral gainers and losers

SECTOR	%CHANGE IN MARKETCAP	ADV	DEC
Infrastructure	1.71%	33	25
Miscellaneous	1.39%	24	22
Chemicals	1.24%	63	43
FMCG	1.14%	22	18
Finance	1.09%	62	54
Capital Goods	1.06%	50	37
Logistics	0.87%	12	16
Metals & Mining	0.75%	48	40
ETF	0.67%	36	15
Automobile & Ancillaries	0.65%	55	54
Agri	0.57%	43	16
Trading	0.55%	11	8
Real Estate	0.51%	33	20
Media & Entertainment	0.38%	15	18
Banks	0.30%	16	20
Textiles	0.27%	53	54
Healthcare	0.23%	51	46
Power	0.20%	14	17
Telecom	0.18%	13	8
Hospitality	0.09%	12	15
Software & IT Services	-0.09%	49	35
Construction Materials	-0.48%	24	29
Plastic Products	-0.57%	17	10
Electricals	-0.93%	11	12

Stocks breakout on moving average

STOCKS	PRICE	30DMA
APTECH	180	168.81
MASTEK	441.30	428.05
MOIL	155.55	152.04
MARICO	344.75	338.63



BATAINDIA EQ is trading higher on bullish trend and settled near the resistance level. The stock may surge higher in coming trade session.

BUY ABOVE 1866 TARGET 1884.65/1903.35/1922 SL 1847.35.



TCS EQ is hovering near support level and settled lower. The stock may give lower breakdown in coming trade session.

SELL BELOW 2149.20 TARGETS 2127.70/2106.20/2084.70 SL 2170.70.



ASIANPAINT FUT is being trading sideways and hovering near immediate resistance level with sustainable buy side volume. The stock fut may trade higher in coming trade session.

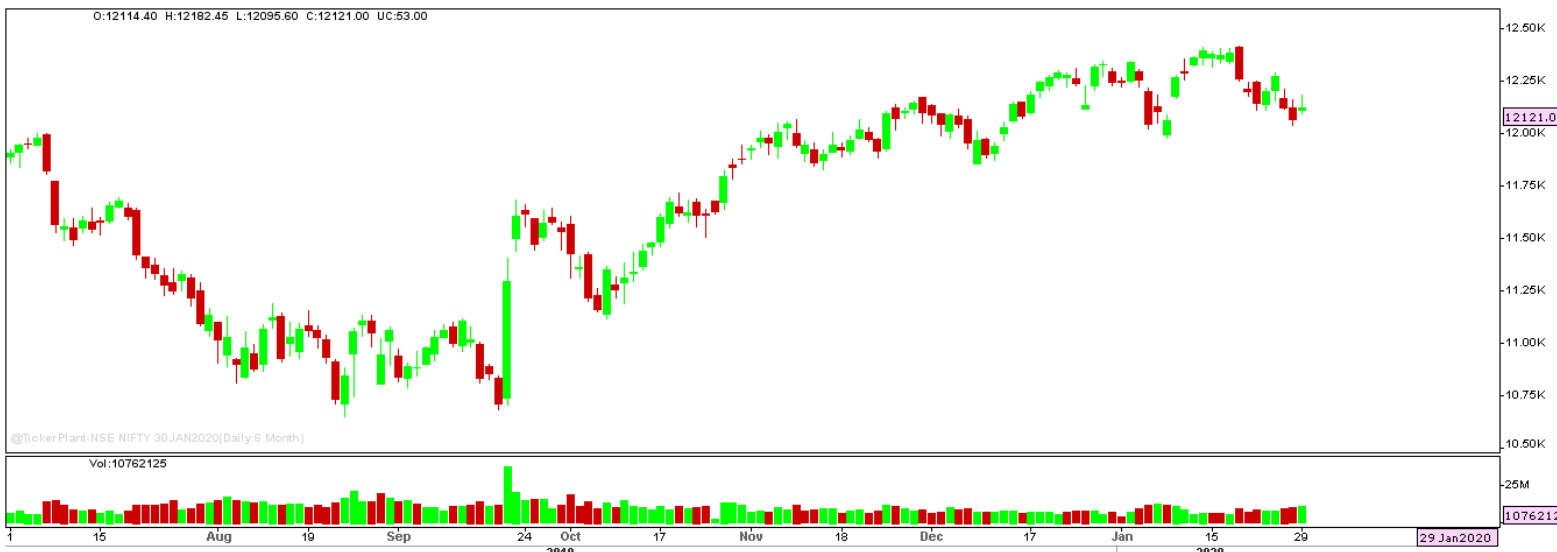
BUY ABOVE 1802.50 TARGETS 1807.50/1812.50 SL 1797.50.



RECLTD EQ is being trading higher from couple of trading sessions and settled higher forming bullish hammer candle on daily chart. The stock may surge higher in coming trade session.

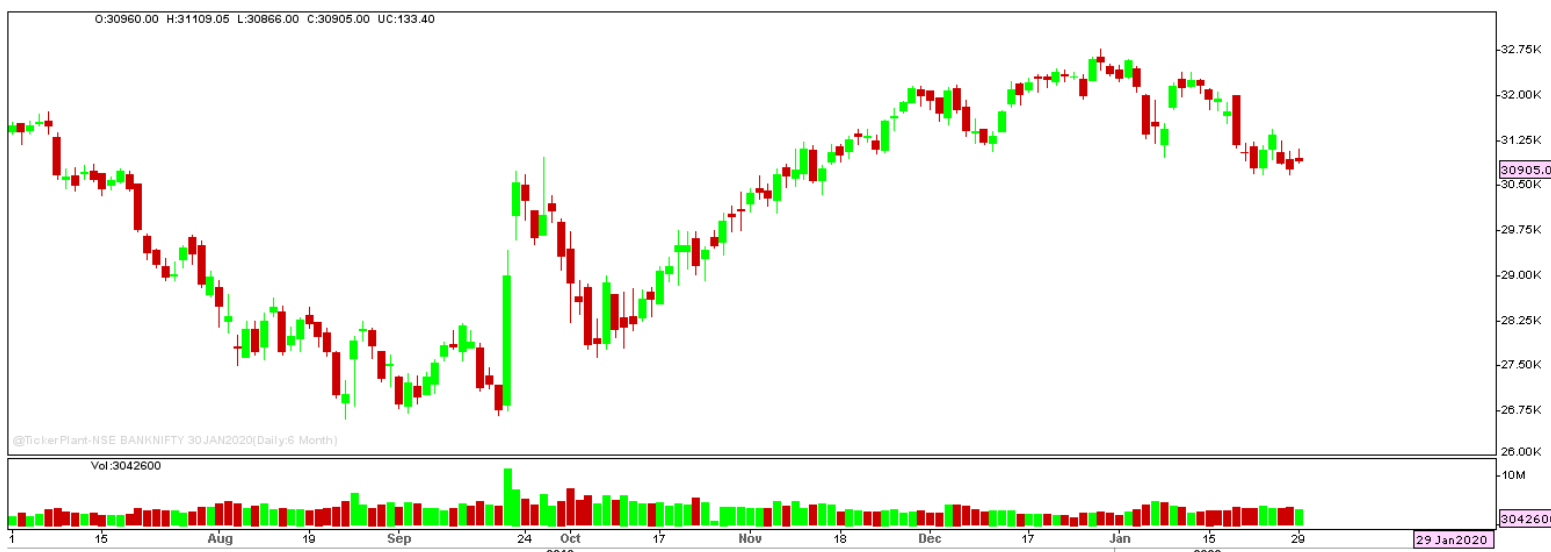
BUY ABOVE 146.20 TARGET 149.15 SL 143.30.

Nifty Technical's



Nifty Future surged higher but witnessed profit booking near day high and settled forming inverted hammer candle on daily chart to close at 12121. The next key support and resistance for the market is at 12025 and 12210.

Bank Nifty Technical's



Bank nifty fut too traded likewise nifty and settled marginally higher from previous day, closed at 30905. The next key support and resistance for the banking index is at 30675 and 31240.

Index	28-JAN-20	29-JAN-20	Change in OI	% Change
NIFTY	10895025	11545875	650850	+5.97

SCRIPS IN F&O BAN FOR TRADE

NIL.

Stocks at 52 Week High

Stocks	New 52 W/H	Previous High
AARTIIND	999	949.50
BAJFINANCE	4444	4295.75
DHANUKA	558	525
DIVISLAB	1994.40	1951.80
IRCTC	1129.90	1059.90

Stocks Approaching 52 Week High

Stocks	LTP	52W High
BATAINDIA	1856.35	1866
SUPREMEIND	1352.80	1367.80
APOLLOHOSP	1688	1713
IGL	511.60	517.85
PVR	1958.55	1987.90

Stocks rising continuously 2-3 days

Stocks	LTP
TECHM	804.15
RECLTD	147.05
BAJFINANCE	4419
HINDPETRO	245.70

Stocks at 52 Week Low

Stocks	New 52 W/L	Previous Low
AGROPHOS	26.15	27.50
CSBBANK	190	192.25
KARURVYSYA	49.20	51.50
KDDL	271.70	280
OIL	136.05	137

Stocks Approaching 52 Week Low

Stocks	LTP	52W Low
GILLETTE	6269.85	6273.65
HINDZINC	198.55	193.05
GEPIL	705.15	669.60
MARICO	344.75	324.25
FRETAIL	332.05	323.20

Stocks falling continuously 2-3 days

Stocks	LTP
VEDL	142.20
EICHERMOT	20192.20
DRREDDY	3148.25
TCS	2154.60

Event Calendar(27th JANUARY to 01st FEBRUARY 2020)

27/01/20 (Mon)	28/01/20 (Tues)	29/01/20 (Wed)	30/01/20 (Thur)	31/01/20 (Fri)	01/02/20 (Sat)
RESULT: DRREDDY,CCL PRODUCTS,HDFC JKPAPER, TORNTPHARM	RESULTS: CGPOWER, CUMMINSIND, KRBL,MASTEK, MARUTI, TATACOFFEE	RESULT: APTECH,BIRLA CORP,ESCORTS, IDFCFIRSTB,QUESS TATAPOWER, NIITTECH,ORIENT CEMENT,NILKAMAL,	RESULT: BAJAJ-AUTO DABUR,GSFC, NOCIL,MARICO, LICHSGFIN,IOC TATAMOTORS	RESULT: ABCAPITAL, BIRLASOFT, CASTROL,HIND- UNILVR,ITC, SBIN,SUNPHARMA TECHM,VGUARD ECO DATA: FEDERAL FISCIAL DEFICIT	RESULT: AMARAJABAT, KARURVYSYA

DISCLAIMER

Trifid Research respects and values the Right to Privacy of each and every individual. We are esteemed by the relationship and by becoming our clients; you have a promise from our side that we shall remain loyal to all our clients and non-clients whose information resides with us. This Privacy Policy of Trifid Research applies to the current clients as well as former clients. Below are the word by word credentials of our Privacy Policy:

1. Your information, whether public or private, will not be sold, rented, exchanged, transferred or given to any company or individual for any reason without your consent.
2. The only use we will be bringing to your information will be for providing the services to you for which you have subscribed to us.
3. Your information given to us represents your identity with us. If any changes are brought in any of the fields of which you have provided us the information, you shall bring it to our notice by either calling us or dropping a mail to us.
4. In addition to the service provided to you, your information (mobile number, E-mail ID etc.) can be brought in use for sending you newsletters, surveys, contest information, or information about any new services of the company which will be for your benefit and while subscribing for our services, you agree that Trifid Research has the right to do so.
5. By subscribing to our services, you consent to our Privacy Policy and Terms of Use.
6. Trifid research does not guarantee or is responsible in any which way, for the trade execution of our recommendations, this is the sole responsibility of the client.
7. Due to the market's volatile nature, the trader may/ may not get appropriate opportunity to execute the trades at the mentioned prices and Trifid Research hold's no liability for any profit/ loss incurred whatsoever in this case.
8. It is the responsibility of the client to view the report timely from our Premium member section on our website: www.trifidresearch.com and the same will also be mailed to this registered email id.
9. Trifid research does not hold any liability or responsibility of delay in mail delivery of reports, as this depends on our mail service provider's network infrastructure.
10. The clients can call us for any query related to buying/selling the securities, based on our recommendations.