

Domestic shares corrected sharply on Thursday amid weak global cues triggered by rising death toll from coronavirus spreading in China. Meanwhile, India on Thursday reported its first case of the novel coronavirus in Kerala, the government said in a statement. The patient, a student of the Wuhan University, is stable and in isolation at a hospital, a statement from the Health Ministry said. All the sectoral indices ended lower led by the pharma, metal, bank, energy, FMCG and infra.

Global Markets

Truck maker AB Volvo reported a smaller than expected fall in fourth-quarter earnings in the face of slowing demand and announced plans for a payout to shareholders that exceeded market expectations. European shares dropped as concerns mounted about the economic impact of an epidemic in China that has now claimed 170 lives. The STOXX dropped 0.9% heading for its sharpest weekly decline in nearly four months.

| INDEX | ADVANCE | DECLINE | UNCHANGED |
|-------|---------|---------|-----------|
| NSE | 560 | 1238 | 350 |
| INDEX | ADVANCE | DECLINE | UNCHANGED |
| BSE | 817 | 1613 | 167 |

Gainers

| LARGCAP | %CHANGE | MIDCAP | %CHANGE |
|------------|---------|------------|---------|
| BAJAJ-AUTO | +1.74% | ESCORTS | +9.41% |
| ICICIBANK | +1.06% | JUBLFOOD | +4.78% |
| POWERGRID | +1.04% | CROMPTON | +3.41% |
| EICHERMOT | +0.73% | HEXAWARE | +3.24% |
| ASIANPAINT | +0.45% | MANAPPURAM | +2.14% |

Losers

| LARGCAP | %CHANGE | MIDCAP | %CHANGE |
|------------|---------|------------|---------|
| YESBANK | -5.22% | GLENMARK | -4.68% |
| BAJAJFINSV | -2.57% | EDELWEISS | -4.33% |
| WIPRO | -2.45% | CASTROLIND | -4.20% |
| RELIANCE | -2.44% | LICHSGFIN | -3.90% |
| ZEEL | -2.33% | RBLBANK | -3.88% |

Nifty



Indian Markets

| INDEX | VALUE | CHANGE | %CHANGE |
|-----------|----------|---------|---------|
| SENSEX | 40913.82 | -284.84 | -0.69% |
| NIFTY | 12035.80 | -93.70 | -0.77% |
| NIFTYBANK | 30647.40 | -229.60 | -0.74% |
| INDIA VIX | 16.8550 | +0.36 | +2.16% |

International Markets

| INDEX | VALUE | CHANGE | %CHANGE |
|----------|----------|---------|---------|
| DOW | 28734.45 | +11.60 | +0.04% |
| NASDAQ | 9275.16 | +5.48 | +0.06% |
| FTSE | 7422.39 | -61.18 | -0.82% |
| SHANGHAI | 2976.53 | -84.22 | -2.75% |
| NIKKEI | 22977.75 | -401.65 | -1.72% |

OUR PREVIOUS CALLS UPDATE

Intraday super stars

| Date | Stocks | Entry | Exit | P/L |
|-------|--------------|---------|--------|-------|
| 30/01 | BATAINDIA(L) | 1866 | - | UNEX |
| 30/01 | TCS(S) | 2149.20 | 2127.2 | +2047 |

Multibagger

| Date | Stock | Entry | Exit | P/L |
|-------|---------------|--------|--------|-------|
| 30/01 | ASIANPAINT(L) | 1802.5 | 1807.5 | +3000 |

Trifid special

| Date | Stock | Entry | Exit | P/L |
|-------|---------------|--------|--------|-------|
| 28/01 | CUMMINSIND(L) | 608.95 | 596.75 | -6010 |

Stock Snippets

Aurobindo Pharma has received a letter from the USFDA classifying the inspection conducted Unit VII, an oral solids formulation manufacturing facility as Official Action Indicated (OAI).

JSW Steel subsidiary sell 39% equity stake in Geo Steel LLC to GeoSteel Group Holdings

Infosys has signed a multi-year, multi-million contract with ABN AMRO Bank to accelerate its cloud and DevOps transformation journey.

The Reserve Bank of India (RBI) on Wednesday said that it has imposed a monetary penalty of Rs1cr on **HDFC Bank** for non-compliance with Master Direction on Know Your Customer dated February 25, 2016 (updated as on December 08, 2016) (Direction).

Larsen & Toubro informed that the Water Effluent Treatment Business of L&T Construction has secured a prestigious EPC order from Narmada Valley Development Authority (NVDA), Government of Madhya Pradesh to execute the Indira Sagar - Parwati Phase III & IV Lift Micro Irrigation Project.

Global Markets

Asian markets fell on Thursday morning as the death toll from the coronavirus rose to 180 and the number of confirmed cases also continued to climb. Hong Kong's Hang Seng Index dropped 1.9%.

Japan stocks were lower after the close on Thursday, as losses in the Paper & Pulp, Railway & Bus and Real Estate sectors led shares lower. At the close in Tokyo, the Nikkei 225 lost 1.72% to hit a new 1-month low.

Australia stocks were lower after the close on Thursday, as losses in the Healthcare, Metals & Mining and IT sectors led shares lower. At the close in Sydney, the S&P/ASX 200 lost 0.33%.

DATE: 30/01/20

| FII/DII | CASH | MTD | YTD |
|---------|---------|----------|----------|
| FII | -962.28 | -1077.72 | -1077.72 |
| DII | +292.35 | -2079.11 | -2079.11 |

Sectoral gainers and losers

| SECTOR | %CHANGE IN MARKETCAP | ADV | DEC |
|--------------------------|----------------------|-----|-----|
| Retailing | 2.31% | 3 | 12 |
| Plastic Products | 0.54% | 10 | 19 |
| Manufacturing | 0.33% | 2 | 4 |
| Consumer Durables | 0.13% | 8 | 18 |
| Chemicals | -0.07% | 28 | 78 |
| Telecom | -0.25% | 6 | 14 |
| Diamond & Jewellery | -0.29% | 3 | 9 |
| Alcohol | -0.34% | 4 | 5 |
| Photographic Products | -0.36% | 0 | 1 |
| Power | -0.40% | 8 | 20 |
| Automobile & Ancillaries | -0.56% | 32 | 82 |
| ETF | -0.57% | 16 | 38 |
| Infrastructure | -0.57% | 14 | 44 |
| Real Estate | -0.65% | 15 | 36 |
| Finance | -0.73% | 37 | 81 |
| Footwear | -0.75% | 2 | 3 |
| Banks | -0.93% | 3 | 37 |
| Hospitality | -0.93% | 9 | 17 |
| Software & IT Services | -0.98% | 26 | 59 |
| Trading | -0.98% | 2 | 17 |
| Industrial Gases & Fuels | -1.00% | 3 | 4 |
| Capital Goods | -1.02% | 17 | 69 |
| Healthcare | -1.08% | 26 | 72 |
| Miscellaneous | -1.08% | 13 | 30 |

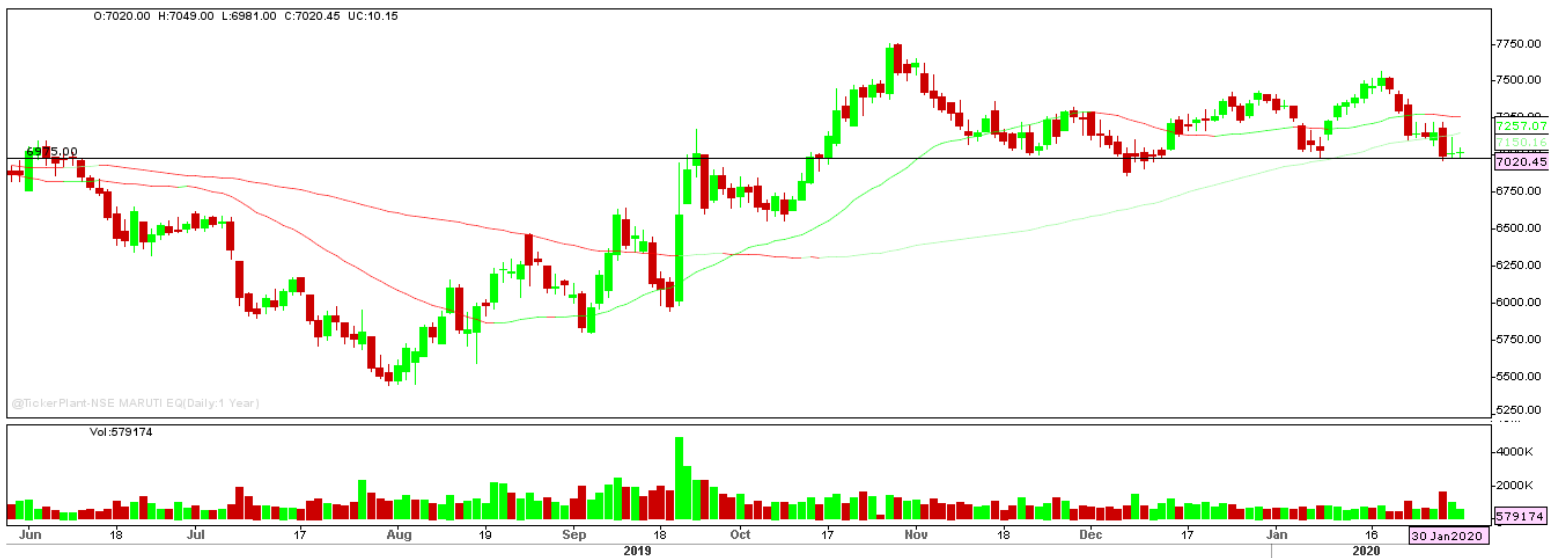
Stocks breakout on moving average

| STOCKS | PRICE | 30DMA |
|------------|--------|--------|
| TRF | 125.40 | 120.02 |
| INDIANHUME | 241.35 | 232.28 |
| TRIGYN | 48.95 | 47.67 |
| TCIDEVELOP | 374.95 | 367.98 |



GAIL EQ is trading lower since couple of trading session hovering near the support level. The stock may fall below the given level.

SELL BELWO 122.75 TARGETS 121.50/120.25/119 SL 124.



MARUTI EQ is hovering near support level and settled lower. The stock may give lower breakdown in coming trade session.

SELL BELOW 6975 TARGETS 6905.25/6835.50/6765.75 SL 7044.75.



BAJAJFINSV FUT tanked and formed bearish engulfing candle on daily chart to close lower. The stock may continue to trade lower in coming trade session too.

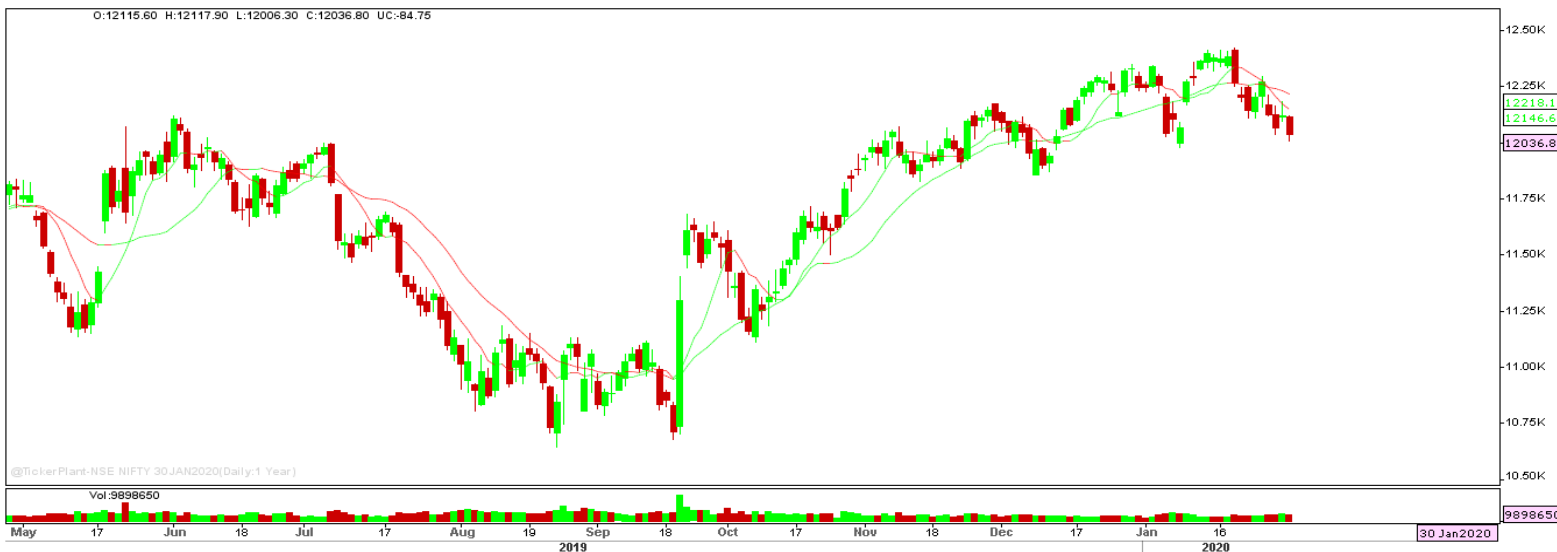
SELL BELOW 9656 TARGETS 9632/9608 SL 9680.



RECLTD EQ is being trading higher from couple of trading sessions and settled higher forming bullish hammer candle on daily chart. The stock may surge higher in coming trade session.

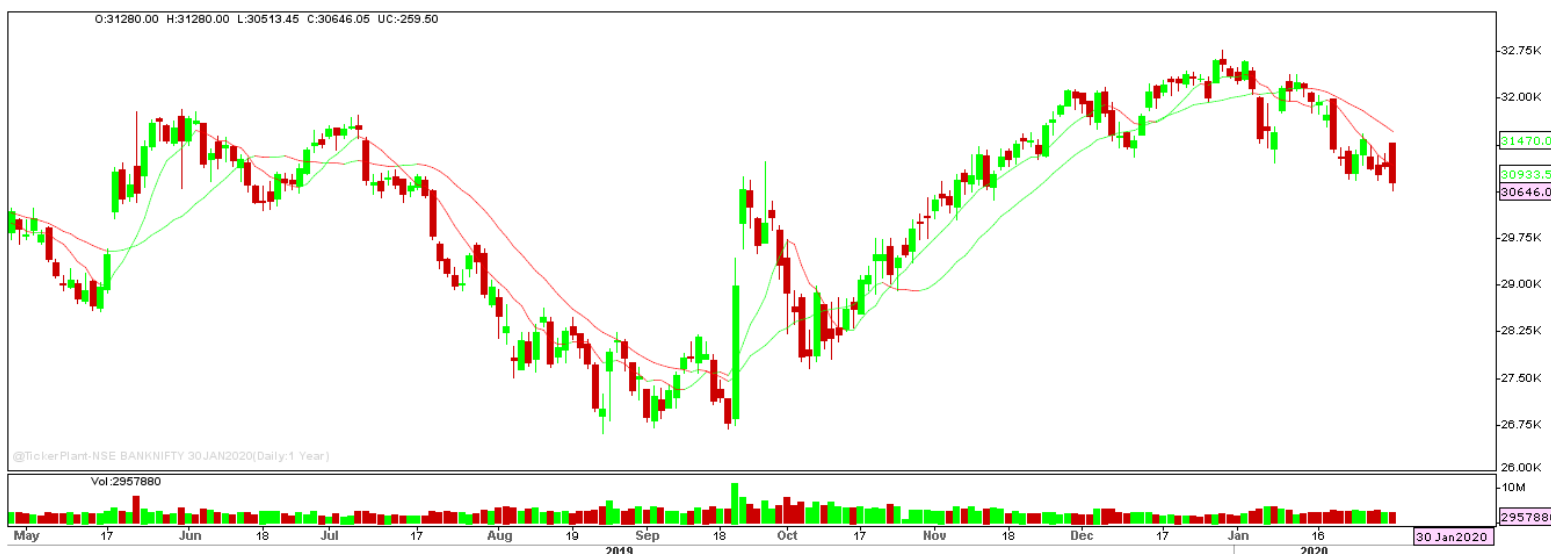
BUY ABOVE 146.20 TARGET 149.15 SL 143.30.

Nifty Technical's



Nifty Future tanked forming bearish candle on daily chart to close at 12036.80. The next key support and resistance for the market is at 11950 and 12120.

Bank Nifty Technical's



Bank nifty fut too tanked forming bearish engulfing candle on daily chart to close at 30646.05. The next key support and resistance for the banking index is at 30300 and 30850.

| Index | 29-JAN-20 | 30-JAN-20 | Change in OI | % Change |
|-------|-----------|-----------|--------------|----------|
| NIFTY | 8229000 | 9106425 | +877425 | +10.66% |

SCRIPS IN F&O BAN FOR TRADE

NIL.

Stocks at 52 Week High

| Stocks | New 52 W/H | Previous High |
|-----------|------------|---------------|
| BERGEPAIN | 579.90 | 574.85 |
| DMART | 2064.00 | 2010.00 |
| ESCORTS | 835.50 | 833.90 |
| IPCALAB | 1287.00 | 1263.60 |
| JUBLFOOD | 1839.95 | 1830.00 |

Stocks Approaching 52 Week High

| Stocks | LTP | 52W High |
|------------|---------|----------|
| APLLTD | 639.85 | 644.00 |
| RATNAMANI | 1225.55 | 1239.95 |
| SOLARINDS | 1294.45 | 1311.00 |
| APOLLOHOSP | 1690.80 | 1713.00 |
| KEC | 347.85 | 353.00 |

Stocks rising continuously 2-3 days

| Stocks | LTP |
|----------|---------|
| TECHM | 792.60 |
| NTPC | 113.75 |
| DRREDDY | 3154.00 |
| DIVISLAB | 1967.90 |

Stocks at 52 Week Low

| Stocks | New 52 W/L | Previous Low |
|---------|------------|--------------|
| CSBBANK | 186.10 | 190.00 |
| FSC | 436.75 | 440.25 |
| MPSLTD | 387.65 | 427.00 |
| ONGC | 115.00 | 115.55 |
| VISHAL | 222.30 | 230.00 |

Stocks Approaching 52 Week Low

| Stocks | LTP | 52W Low |
|------------|---------|---------|
| GILLETTE | 6260.40 | 6169.00 |
| ITC | 234.05 | 230.50 |
| FRETAIL | 329.10 | 323.20 |
| GEPIL | 687.35 | 669.60 |
| ZENSARTECH | 172.95 | 168.10 |

Stocks falling continuously 2-3 days

| Stocks | LTP |
|-----------|----------|
| VEDL | 140.60 |
| EICHERMOT | 20300.00 |
| HINDALCO | 193.00 |
| GAIL | 123.45 |

Event Calendar(27th JANUARY to 01st FEBRUARY 2020)

| 27/01/20 (Mon) | 28/01/20 (Tues) | 29/01/20 (Wed) | 30/01/20 (Thur) | 31/01/20 (Fri) | 01/02/20 (Sat) |
|---|--|---|--|--|--------------------------------------|
| RESULT: DRREDDY,CCL PRODUCTS,HDFC JKPAPER, TORNTPHARM | RESULTS: CGPOWER, CUMMINSIND, KRBL,MASTEK, MARUTI, TATACOFFEE | RESULT: APTECH,BIRLA CORP,ESCORTS, IDFCFIRSTB,QUESS TATAPOWER, NIITTECH,ORIENT CEMENT,NILKAMAL, | RESULT: BAJAJ-AUTO DABUR,GSFC, NOCIL,MARICO, LICHSGFIN,IOC TATAMOTORS | RESULT: ABCAPITAL, BIRLASOFT, CASTROL,HIND- UNILVR,ITC, SBIN,SUNPHARMA TECHM,VGUARD ECO DATA: FEDERAL FISCIAL DEFICIT | RESULT: AMARAJABAT, KARURVYSYA |

DISCLAIMER

Trifid Research respects and values the Right to Privacy of each and every individual. We are esteemed by the relationship and by becoming our clients; you have a promise from our side that we shall remain loyal to all our clients and non-clients whose information resides with us. This Privacy Policy of Trifid Research applies to the current clients as well as former clients. Below are the word by word credentials of our Privacy Policy:

1. Your information, whether public or private, will not be sold, rented, exchanged, transferred or given to any company or individual for any reason without your consent.
2. The only use we will be bringing to your information will be for providing the services to you for which you have subscribed to us.
3. Your information given to us represents your identity with us. If any changes are brought in any of the fields of which you have provided us the information, you shall bring it to our notice by either calling us or dropping a mail to us.
4. In addition to the service provided to you, your information (mobile number, E-mail ID etc.) can be brought in use for sending you newsletters, surveys, contest information, or information about any new services of the company which will be for your benefit and while subscribing for our services, you agree that Trifid Research has the right to do so.
5. By subscribing to our services, you consent to our Privacy Policy and Terms of Use.
6. Trifid research does not guarantee or is responsible in any which way, for the trade execution of our recommendations, this is the sole responsibility of the client.
7. Due to the market's volatile nature, the trader may/ may not get appropriate opportunity to execute the trades at the mentioned prices and Trifid Research hold's no liability for any profit/ loss incurred whatsoever in this case.
8. It is the responsibility of the client to view the report timely from our Premium member section on our website: www.trifidresearch.com and the same will also be mailed to this registered email id.
9. Trifid research does not hold any liability or responsibility of delay in mail delivery of reports, as this depends on our mail service provider's network infrastructure.
10. The clients can call us for any query related to buying/selling the securities, based on our recommendations.