

Key indices advanced for third straight trading sessions on Wednesday. After a shaky start, the equity benchmarks turned volatile and hit the day's low by noon. The indices, however, bounced back and ended near the high point of the day. The Nifty managed to close slightly above the 12,000 level. The sentiment got a boost after India's Services PMI in January rose at quickest rates in seven years. Investors, however, remained cautious ahead of the Reserve Bank of India (RBI)'s policy outcome tomorrow.

Global Markets

Britain's Metro Bank has hired a law firm to help it investigate payments routed through the bank that breached U.S. sanctions, a regulatory filing showed. European shares retreated from recent gains on Wednesday as concerns over the virus outbreak in China persisted, while markets also waited for service-sector activity data from the bloc. The pan-European STOXX 600 (STOXX) index fell 0.2%.

INDEX	ADVANCE	DECLINE	UNCHANGED
NSE	1005	772	369
INDEX	ADVANCE	DECLINE	UNCHANGED
BSE	1352	1116	192

Gainers

LARGECAP	%CHANGE	MIDCAP	%CHANGE
TATAMOTORS	+10.68%	SRF	+6.58%
YESBANK	+8.58%	RECLTD	+6.12%
TATASTEEL	+5.75%	M&MFIN	+5.41%
JSWSTEEL	+4.95%	SAIL	+4.84%
BPCL	+4.82%	APOLLOTYRE	+4.24%

Losers

LARGECAP	%CHANGE	MIDCAP	%CHANGE
ZEEL	-6.38%	CASTROLIND	-4.31%
HEROMOTOCO	-3.58%	BALKRISIND	-2.28%
DRREDDY	-3.08%	JSWENERGY	-2.06%
POWERGRID	-2.29%	GSPL	-1.45%
MARUTI	-2.08%	EXIDEIND	+1.43%

Nifty



Indian Markets

INDEX	VALUE	CHANGE	%CHANGE
SENSEX	41142.66	+353.28	+0.87%
NIFTY	12090.25	+110.60	+0.94%
NIFTYBANK	31013.85	+327.15	+1.10%
INDIA VIX	13.9825	-0.40	-2.76%

International Markets

INDEX	VALUE	CHANGE	%CHANGE
DOW	28807.63	+407.82	+1.44%
NASDAQ	9467.97	+194.57	+2.10%
FTSE	7495.08	+55.26	+0.74%
SHANGHAI	2818.09	+34.80	+1.25%
NIKKEI	23319.56	+234.97	+1.02%

OUR PREVIOUS CALLS UPDATE

Intraday super stars

Date	Stocks	Entry	Exit	P/L
05/02	TATASTEEL(L)	454.25	467.90	+6009
05/02	INFY(L)	791.25	-	UNEX

Multibagger

Date	Stock	Entry	Exit	P/L
05/02	MARUTI(L)	7225	7195	-3000

Trifid special

Date	Stock	Entry	Exit	P/L
04/01	PVR(L)	1994.10	2034	+6002

Stock Snippets

Sun Pharma launched Absorica LD capsules in US for acne.

Granules India jumped 5 percent after the company received USFDA approval for Valganciclovir Hydrochloride for oral solution. The USFDA approved the ANDA filed by Granules Pharmaceuticals, a wholly-owned foreign subsidiary of Granules India Limited for Valganciclovir Hydrochloride for Oral Solution, 50 mg/mL.

USFDA clears **Cadila Healthcare** subsidiary's Ahmedabad unit with no observation.

REC board approved amalgamation of company's two arms REC Transmission Projects and REC Power Distribution.

DCB Bank revised MCLR across various tenors with effect from Feb. 6. One Month marginal cost of lending at 8.62% and One Year MCLR at 10.22%.

NCLT Kolkata has approved amalgamation of **Vedanta's** arm Vedanta Star with Electrosteel Steels. Post the amalgamation Vedanta will hold 95.48% stake in the target company.

Global Markets

Asian stocks steadied on Wednesday as Chinese shares moved higher on hopes of additional stimulus to cushion the economic blow from a coronavirus outbreak, but risks remain as the illness continued to spread and the death toll neared 500.

Japan stocks were higher after the close on Wednesday, as gains in the Paper & Pulp, Railway & Bus and Real Estate sectors led shares higher. The Nikkei 225 rose 1.02%.

Australia stocks were higher after the close on Wednesday, as gains in the IT, Metals & Mining and Materials sectors led shares higher. The S&P/ASX 200 added 0.39%.

DATE: 05/02/20

FII/DII	CASH	MTD	YTD
FII	+248.94	-37.71	-687.86
DII	+262.75	+8427.15	+8613.15

Sectoral gainers and losers

SECTOR	%CHANGE IN MARKETCAP	ADV	DEC
Trading	3.29%	13	5
Logistics	2.91%	15	12
Real Estate	2.25%	27	25
Metals & Mining	1.81%	52	40
Finance	1.55%	69	47
Diversified	1.43%	11	9
Capital Goods	1.27%	47	34
Consumer Durables	1.15%	14	10
Plastic Products	1.12%	13	16
Software & IT Services	1.00%	39	45
Electricals	0.91%	17	7
Infrastructure	0.89%	32	25
Banks	0.84%	22	15
Miscellaneous	0.80%	22	21
Textiles	0.66%	52	51
ETF	0.60%	37	18
Healthcare	0.52%	66	31
Agri	0.48%	27	33
Automobile & Ancillaries	0.37%	72	42
FMCG	0.28%	21	20
Chemicals	0.24%	61	45
Construction Materials	0.23%	24	30
Hospitality	0.18%	12	13
Power	-0.19%	21	10

Stocks breakout on moving average

STOCKS	PRICE	30DMA
PFC	122.90	116.79
KSCL	497.10	488.62
MCX	1310.05	1290.06
ICICIBANK	539.10	532.68



BATAINDIA EQ surged higher taking the support of drawn trend line, after forming bullish engulfing candle on daily chart and settled near the immediate resistance level. The stock may give breakout in coming trade session.

BUY ABOVE 1882.50 TARGETS 1901.35/1920.15/1939 SL 1863.70



DABUR EQ is being trading higher since couple of trading session settled near the yearly high. The stock may give breakout in coming trade session.

BUY ABOVE 513 TARGETS 518.15/523.25/528.40 SL 507.85



GRASIM FUT surged higher after forming bullish engulfing candle on daily chart and settled near the immediate resistance level. The stock may give breakout in coming trade session.

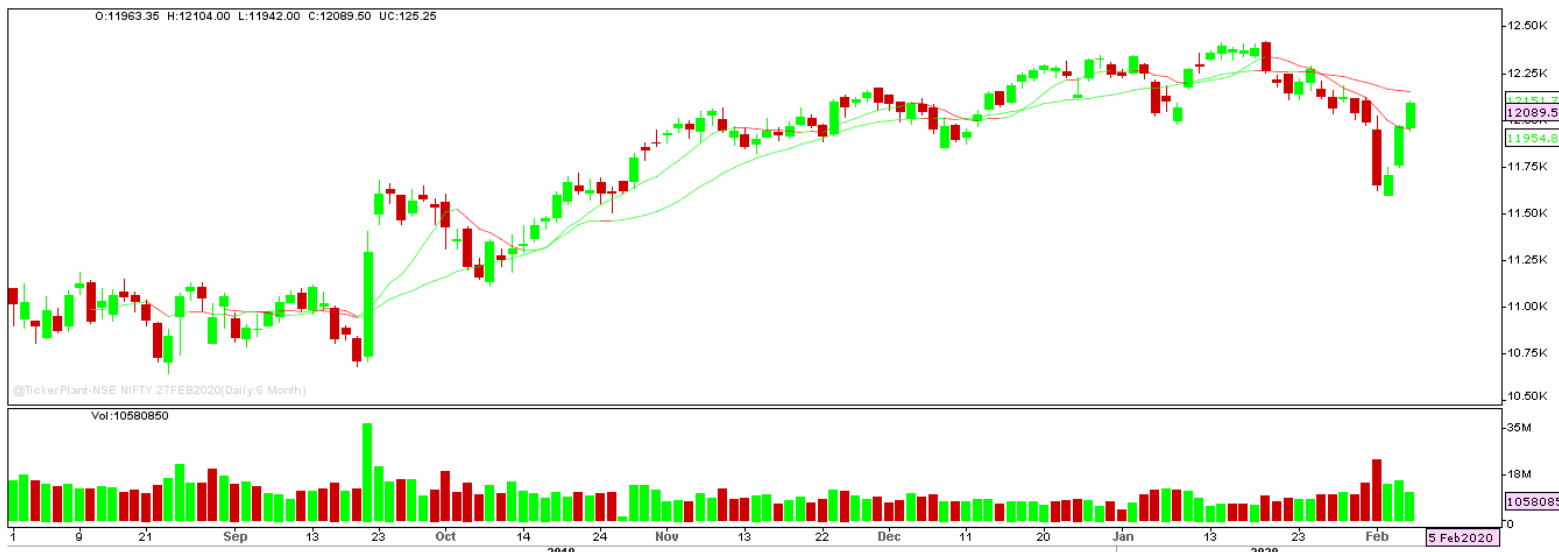
BUY ABOVE 806 TARGETS 810/814 SL 802



UBL EQ traded higher forming bullish candle on daily chart and settled near the critical resistance level. The stock may surge higher in coming trade session.

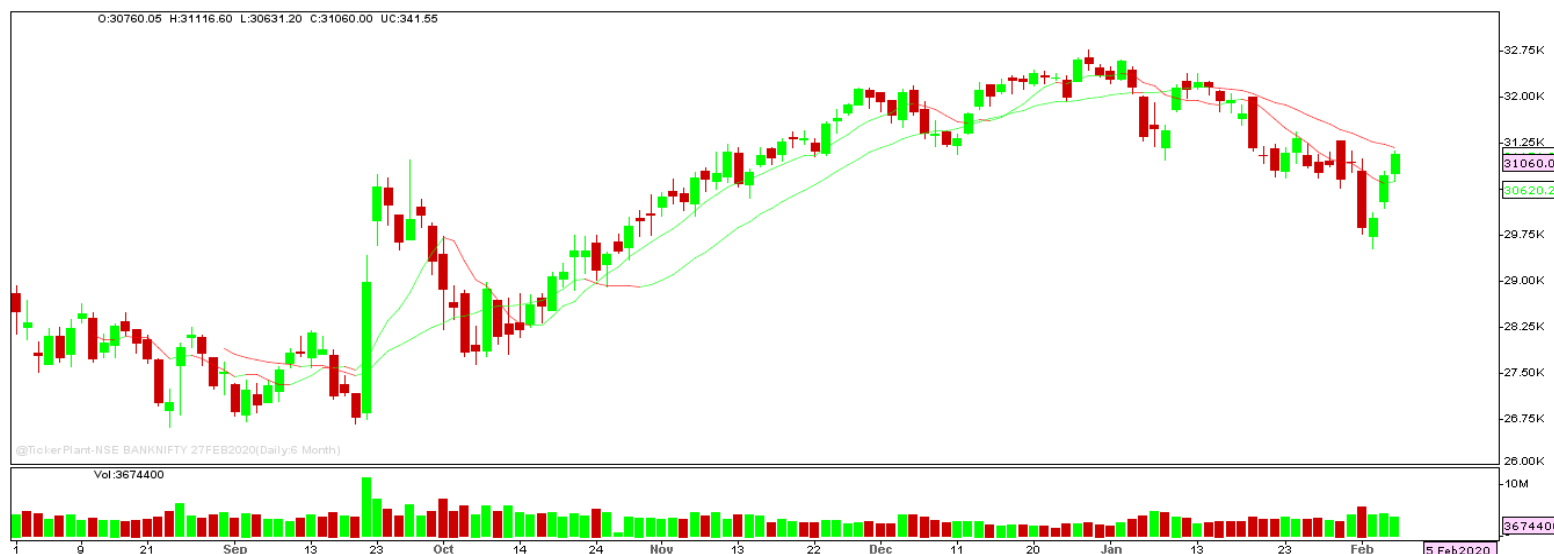
BUY ABOVE 1318 TARGET 1344.35 SL 1291.65

Nifty Technical's



Nifty Future surged higher for the third consecutive trade session to close higher at 12089.50. The next key support and resistance for the market is at 11950 and 12175.

Bank Nifty Technical's



Bank nifty fut too surged higher and traded in line with nifty 50 to close at 31060. The next key support and resistance for the banking index is at 30700 and 31450

Index	04-FEB-20	05-FEB-20	Change in OI	% Change
NIFTY	13816500	14665050	+848550	+6.14%

SCRIPS IN F&O BAN FOR TRADE

NIL.

Stocks at 52 Week High

Stocks	New 52 W/H	Previous High
AJANTPHARM	1227	1218
AMBER	1639.95	1635
AUBANK	1142.75	1105
ESCORTS	865.80	860
JINDALSTEL	192.95	191.20

Stocks Approaching 52 Week High

Stocks	LTP	52W High
BATAINDIA	1872.80	1882.50
PIDILITIND	1550.95	1574.40
IGL	514.55	521.35
ASIANPAINT	1873.50	1896.75
JUBLFOOD	1942.65	1973.85

Stocks rising continuously 2-3 days

Stocks	LTP
TITAN	1279.85
BPCL	501.70
TATASTEEL	475.05
JSWSTEEL	269.25

Stocks at 52 Week Low

Stocks	New 52 W/L	Previous Low
GAYAPROJ	44.25	46.55
INDIANB	94.70	95.45
KHADIM	146.95	148.40
MARICO	299.20	303
SPICEJET	91	91.15

Stocks Approaching 52 Week Low

Stocks	LTP	52W Low
GILLETTE	6498.80	6169.00
WIPRO	242.25	232.20
NTPC	111.20	106.66
ITC	216.45	205
ONGC	106.80	101.55

Stocks falling continuously 2-3 days

Stocks	LTP
ZEEL	226.65
BANDHANBNK	429.20
PGHH	11527.80
OFSS	2981.60

Event Calendar(03rd FEBRUARY to 08th FEBRUARY 2020)

03/02/20 (Mon)	04/02/20 (Tues)	05/02/20 (Wed)	06/02/20 (Thur)	07/02/20 (Fri)	08/02/20 (Sat)
RESULT: GODREJPROP, HUDCO, HSIL, SRF, MRPL, TATACHEM, ECO DATA: NIKKEI MARKIT MANUFACTURING PMI.	RESULTS: ADANI PORTS, BHARTIARTL, CSBBANK, GATI, EXIDIND, JSWENERGY, PNB, TVSMOTOR, THERMAX, TITAN, TATAGLOBAL.	RESULT: ADANI ENT, AGL, ANDHRABANK, AJANTPHARM, BERGEPAIN, BOSCH, CIPLA, DIVISLAB, HINDPETRO, IBULHSGFIN, ENGINEERSIN, NIIT, PTC, ECO DATA: NIKKEI SERVICE PMI.	RESULT: ADANIPOWER, AUROPHARMA, DALBHARAT, NMDC, IGL , MINDAIND, SUNPHARMA, UCOBANK, ECO DATA: CRR, INTEREST RATE DECISION, REVERSE REPO RATE.	RESULT: ACC, ABBOTINDIA, BRITANNIA, EMAMILTD, MAXINDIA, KOLTEPATIL, NTPC, NHPC, VOLTAS, UPL, ECO DATA: FX RESERVE DATA.	RESULT: DLINK, JKCEMENT, M&M, VRLLOG.

DISCLAIMER

Trifid Research respects and values the Right to Privacy of each and every individual. We are esteemed by the relationship and by becoming our clients; you have a promise from our side that we shall remain loyal to all our clients and non-clients whose information resides with us. This Privacy Policy of Trifid Research applies to the current clients as well as former clients. Below are the word by word credentials of our Privacy Policy:

1. Your information, whether public or private, will not be sold, rented, exchanged, transferred or given to any company or individual for any reason without your consent.
2. The only use we will be bringing to your information will be for providing the services to you for which you have subscribed to us.
3. Your information given to us represents your identity with us. If any changes are brought in any of the fields of which you have provided us the information, you shall bring it to our notice by either calling us or dropping a mail to us.
4. In addition to the service provided to you, your information (mobile number, E-mail ID etc.) can be brought in use for sending you newsletters, surveys, contest information, or information about any new services of the company which will be for your benefit and while subscribing for our services, you agree that Trifid Research has the right to do so.
5. By subscribing to our services, you consent to our Privacy Policy and Terms of Use.
6. Trifid research does not guarantee or is responsible in any which way, for the trade execution of our recommendations, this is the sole responsibility of the client.
7. Due to the market's volatile nature, the trader may/ may not get appropriate opportunity to execute the trades at the mentioned prices and Trifid Research hold's no liability for any profit/ loss incurred whatsoever in this case.
8. It is the responsibility of the client to view the report timely from our Premium member section on our website: www.trifidresearch.com and the same will also be mailed to this registered email id.
9. Trifid research does not hold any liability or responsibility of delay in mail delivery of reports, as this depends on our mail service provider's network infrastructure.
10. The clients can call us for any query related to buying/selling the securities, based on our recommendations.