

Key benchmark indices corrected on Friday, following four sessions of broad gains. The Nifty slipped below 12,100 mark. Negative global cues spoiled investor's sentiment. At close, the Sensex was down 164.18 points or 0.40% at 41141.85, while Nifty was down 51.60 points or 0.43% at 12086.40.

Among sectors, auto, energy and infra ended lower, while buying witnessed in the pharma, IT, metal and FMCG.

Global Markets

Hong Kong Airlines will slash 400 jobs and cut operations given weak travel demand because of the coronavirus outbreak, adding to financial woes for the city's second-largest carrier. European shares slipped slightly from all-time highs on Friday, as the rising death toll from the coronavirus outbreak and the pace of the spreading infection dulled sentiment. European stocks benchmark STOXX 600 (STOXX) fell 0.2%.

INDEX	ADVANCE	DECLINE	UNCHANGED
NSE	905	867	373
INDEX	ADVANCE	DECLINE	UNCHANGED
BSE	1205	1292	173

Gainers

LARGECAP	%CHANGE	MIDCAP	%CHANGE
ZEEL	+5.92%	NATCOPHARM	+8.84%
NTPC	+3.21%	VBL	+8.63%
COALINDIA	+2.83%	HEG	+7.49%
ONGC	+1.86%	FORTIS	+5.11%
HINDALCO	+1.75%	AJANTPHARM	+5.03%

Losers

LARGECAP	%CHANGE	MIDCAP	%CHANGE
EICHERMOT	-3.21%	VARROC	-3.45%
TATAMOTORS	-2.94%	JUBILANT	-2.57%
INDUSINDBK	-2.66%	EDELWEISS	-2.52%
M&M	-1.90%	IGL	-2.14%
GRASIM	-1.67%	PRESTIGE	-2.05%

Nifty



Indian Markets

INDEX	VALUE	CHANGE	%CHANGE
SENSEX	41141.85	-164.18	-0.40%
NIFTY	12098.35	-39.60	-0.33%
NIFTYBANK	31201.95	-102.10	-0.33%
INDIA VIX	13.7725	-0.01	-0.05%

International Markets

INDEX	VALUE	CHANGE	%CHANGE
DOW	29379.77	+88.92	+0.30%
NASDAQ	9572.15	+63.47	+0.67%
FTSE	7451.40	-53.39	-0.71%
SHANGHAI	2875.96	+9.45	+0.33%
NIKKEI	23827.98	-45.61	-0.19%

OUR PREVIOUS CALLS UPDATE

Intraday super stars

Date	Stocks	Entry	Exit	P/L
07/02	GRANULES(L)	162	166.90	+5987
07/02	PFC(L)	124.55	125.80	+2007

Multibagger

Date	Stock	Entry	Exit	P/L
07/02	AUROPHARMA(L)	515.30	521.30	+6000

Trifid special

Date	Stock	Entry	Exit	P/L
06/01	UBL(L)	1318	1344.35	+5997

Stock Snippets

Wipro bagged multi-year strategic IT deal from Marelli.

BEML Unveils Latest Products at DEFEXPO 2020.

Dr Reddy's Laboratories announced the launch of Trientine Hydrochloride Capsules USP, 250 mg approved by the US Food and Drug Administration (USFDA).

Adani Enterprises share price rose 2 percent on February 7 after Airbus India and Adani Defence & Aerospace signed a Memorandum of Understanding (MoU) at DefExpo 2020 to leverage synergies in aerospace and civil aviation sector.

Strides Pharma Science's step - down wholly - owned subsidiary, Strides Pharma Global Pte. Limited, Singapore, has entered into a definitive asset transfer and licensing agreement with Pharmaceuticals International, Inc.(Pii) to acquire 18 ANDAs for the US market.

State Bank of India announced a 5 basis points reduction in its MCLR across tenors, effective February 10. This is the ninth consecutive cut in MCLR by the bank in the current fiscal.

Global Markets

Asian markets fell in morning trade on Friday. China's trade data, which is due later in the day, is expected to generate some focus as investors tried to assess the potential economic impact of the virus outbreak in China. China's Shanghai Composite lost 0.6%.

Japan stocks were lower after the close on Friday, as losses in the Paper & Pulp, Railway & Bus and Real Estate sectors led shares lower. The Nikkei 225 lost 0.19%.

Australia stocks were lower after the close on Friday, as losses in the Energy, Resources and Materials sectors led shares lower. The S&P/ASX 200 declined 0.38%

DATE: 07/02/20

FII/DII	CASH	MTD	YTD
FII	+161.93	-431.14	-1086.29
DII	-178.59	+8552.57	+8738.57

Sectoral gainers and losers

SECTOR	%CHANGE IN MARKETCAP	ADV	DEC
Photographic Products	6.46%	1	0
Containers & Packaging	2.77%	9	2
Media & Entertainment	2.15%	18	16
Healthcare	1.81%	62	36
Insurance	1.73%	5	1
Alcohol	1.34%	7	2
Retailing	1.13%	9	6
Trading	1.10%	13	7
Consumer Durables	1.05%	13	12
Ship Building	1.05%	1	1
Miscellaneous	0.95%	17	26
Diamond & Jewellery	0.88%	5	7
Metals & Mining	0.88%	46	43
Agri	0.61%	24	34
Capital Goods	0.56%	40	46
Plastic Products	0.56%	16	13
Software & IT Services	0.56%	49	37
Diversified	0.54%	11	8
Power	0.54%	17	13
Hospitality	0.46%	10	15
Chemicals	0.42%	43	63
ETF	0.37%	37	17
FMCG	0.31%	22	20
Construction Materials	0.10%	29	27
Banks	-0.01%	17	21

Stocks breakout on moving average

STOCKS	PRICE	30DMA
TDPOWERSYS	156.70	138.11
MINDACORP	110.65	103.53
MSTCLTD	142.85	134.46
ADFFOODS	314.45	299.49



APOLLOTYRE EQ is being trading lower since couple of trading session and settled near the support level. The stock may further trade south wards in coming trade session.

SELL BELOW 163.20 TARGETS 161.55/159.95/158.30 SL 164.85.



M&MFIN EQ is being trading higher since couple of trading session settled near high forming bullish consolidation. The stock may give breakout in coming trade session.

BUY ABOVE 400.35 TARGETS 404.35/408.35/412.35 SL 396.35.



RBLBANK FUT is being trading higher showing signs of upmove on chart and settled near the immediate resistance level. The stock may surge higher in coming trade session.

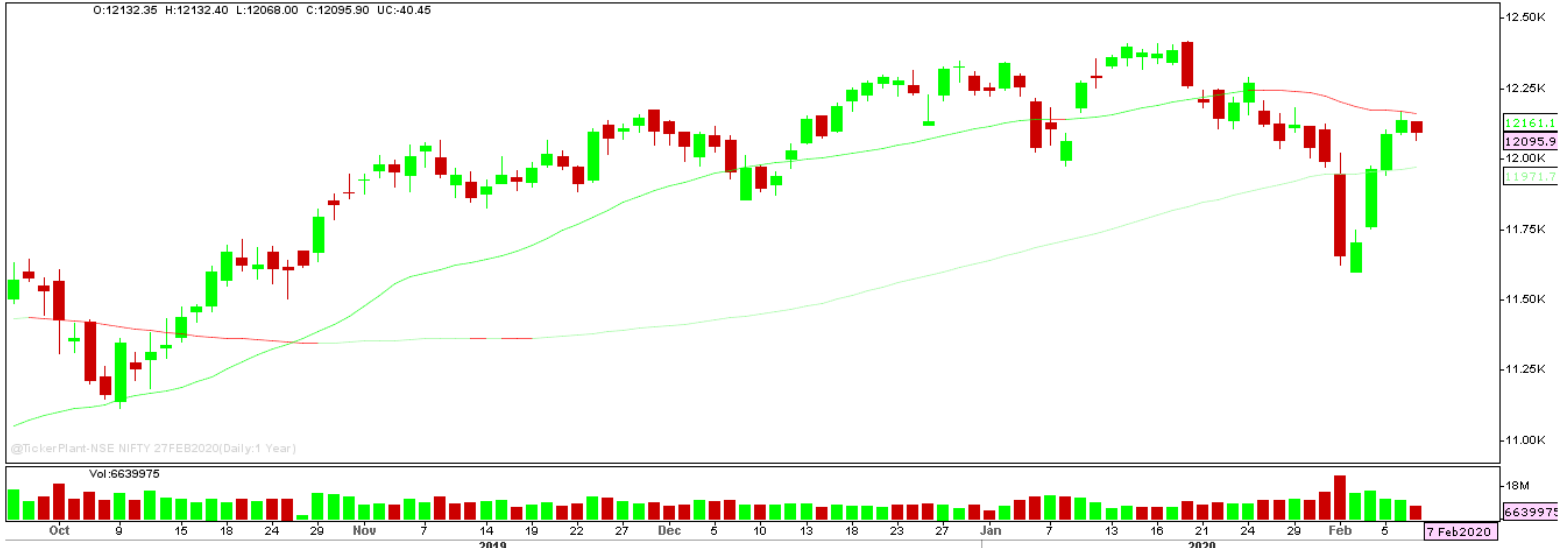
BUY ABOVE 341.40 TARGETS 343.40/345.40 SL 339.40.



RECLTD EQ traded higher forming bullish candle on daily chart and settled near the critical resistance level. The stock may surge higher in coming trade session.

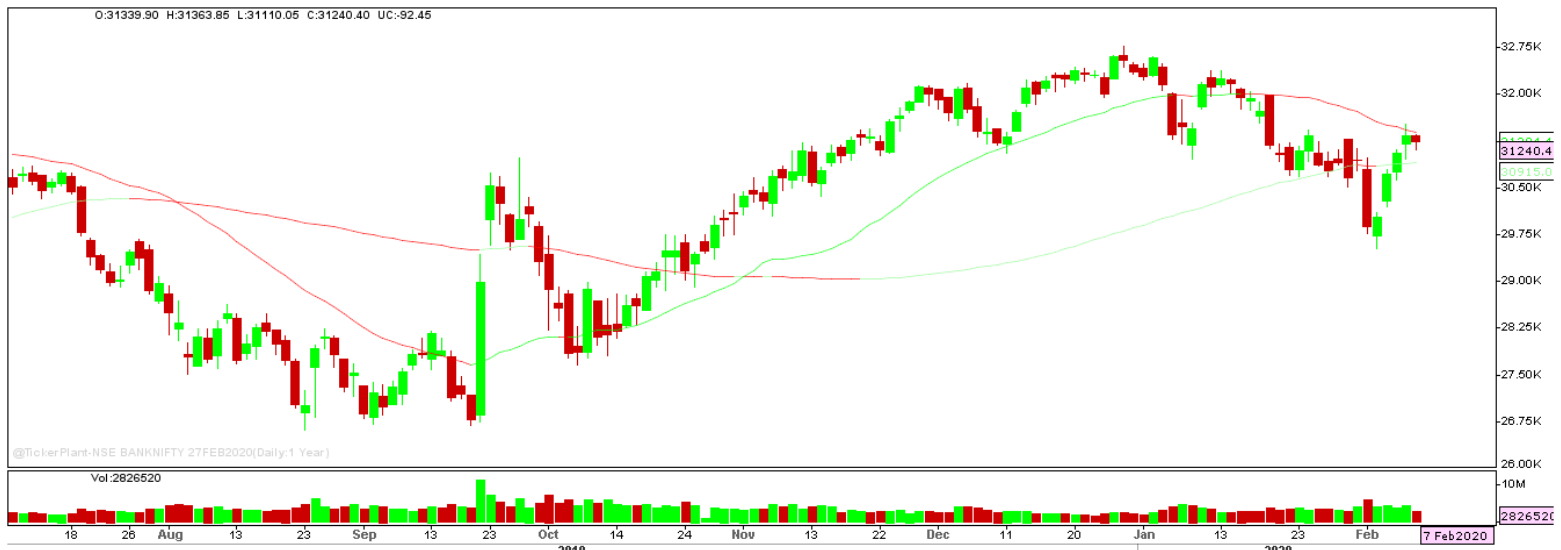
BUY ABOVE 153.50 TARGETS 156.60 SL 150.45.

Nifty Technical's



Nifty Future tanked on account of profit booking on the last trading session of the week to close at 12095.90. The next key support and resistance for the market is at 11900 and 12250.

Bank Nifty Technical's



Bank nifty fut too tanked in line with nifty 50 to close at 31240.40. The next key support and resistance for the banking index is at 31000 and 31530.

Index	06-FEB-20	07-FEB-20	Change in OI	% Change
NIFTY	13788375	13771200	+21450	+0.16%

SCRIPS IN F&O BAN FOR TRADE
YESBANK.

Stocks at 52 Week High

Stocks	New 52 W/H	Previous High
AIAENG	1960.00	1889.00
AUBANK	1147.60	1142.75
DIVISLAB	2095.00	2079.40
EIDPARRY	245.00	243.45
ESCORTS	874.25	865.80

Stocks Approaching 52 Week High

Stocks	LTP	52W High
DABUR	513.65	518.00
TATACHEM	763.80	771.15
GALAXYSURF	1645.20	1664.70
RELAXO	740.70	750.00
NESTLEIND	16327.80	16549.45

Stocks rising continuously 2-3 days

Stocks	LTP
ZEEL	249.75
NTPC	115.60
COALINDIA	185.05
UPL	543.10

Stocks at 52 Week Low

Stocks	New 52 W/L	Previous Low
FSC	435.00	436.75
GUJALKALI	352.00	370.00
KHADIM	146.55	146.95
THOMASCOOK	50.50	51.10
V2RETAIL	87.50	89.25

Stocks Approaching 52 Week Low

Stocks	LTP	52W Low
INDIANB	96.55	94.70
ENGINERSIN	91.95	90.00
GILLETTE	6351.75	6169.00
HINDZINC	195.05	188.15
ITC	213.40	205.00

Stocks falling continuously 2-3 days

Stocks	LTP
KOTAKBANK	1653.05
TATAMOTORS	173.60
M&M	569.10
GRASIM	787.65

Event Calendar(10th FEBRUARY to 15th FEBRUARY 2020)

10/02/20 (Mon)	11/02/20 (Tues)	12/02/20 (Wed)	13/02/20 (Thur)	14/02/20 (Fri)	15/02/20 (Sat)
RESULT: ABAN, BHARATFORG, GAIL, DBL, IOB, GRASIM, MAJESCO, KAJARIACER, RAJESHEXPO, SUNDARMFN, UNIONBANK.	RESULTS: 3MINDIA, COALINDIA, BHEL, BASF, CESC, CRISIL, HEXAWARE, HEG, GULFOILLUB, IDBI, SIEMENS, SYNDIBANK.	RESULT: ABB, ASHOKLEY, UNIONBANK, NAUKRI, HINDALCO, IRCTC, IPCALAB, NBCC, NITCO, P&G, RICOAUTO, TORNTPOWER, VIPIND, ECO DATA: CPI INFLATION DATA.	RESULT: APOLLOHOSP, ATULAUTO, BPCL, DEEPAKFERT, GODREJIND, HINDCOPPER, JAICORP, PHILIPCARB.	RESULT: BALKRISIND, DCM, GLENMARK, IVRCL, KHAITANLTD, MTNL, MMTG, MEP, PFIZER, SAIL, SREINFRA, ECO DATA: WPI INFLATION, FX RESERVE DATA.	RESULT: DLINK, JKCEMENT, M&M, VRLLOG.

DISCLAIMER

Trifid Research respects and values the Right to Privacy of each and every individual. We are esteemed by the relationship and by becoming our clients; you have a promise from our side that we shall remain loyal to all our clients and non-clients whose information resides with us. This Privacy Policy of Trifid Research applies to the current clients as well as former clients. Below are the word by word credentials of our Privacy Policy:

1. Your information, whether public or private, will not be sold, rented, exchanged, transferred or given to any company or individual for any reason without your consent.
2. The only use we will be bringing to your information will be for providing the services to you for which you have subscribed to us.
3. Your information given to us represents your identity with us. If any changes are brought in any of the fields of which you have provided us the information, you shall bring it to our notice by either calling us or dropping a mail to us.
4. In addition to the service provided to you, your information (mobile number, E-mail ID etc.) can be brought in use for sending you newsletters, surveys, contest information, or information about any new services of the company which will be for your benefit and while subscribing for our services, you agree that Trifid Research has the right to do so.
5. By subscribing to our services, you consent to our Privacy Policy and Terms of Use.
6. Trifid research does not guarantee or is responsible in any which way, for the trade execution of our recommendations, this is the sole responsibility of the client.
7. Due to the market's volatile nature, the trader may/ may not get appropriate opportunity to execute the trades at the mentioned prices and Trifid Research hold's no liability for any profit/ loss incurred whatsoever in this case.
8. It is the responsibility of the client to view the report timely from our Premium member section on our website: www.trifidresearch.com and the same will also be mailed to this registered email id.
9. Trifid research does not hold any liability or responsibility of delay in mail delivery of reports, as this depends on our mail service provider's network infrastructure.
10. The clients can call us for any query related to buying/selling the securities, based on our recommendations.