

The equity market barometers ended with decent gains on Tuesday. The Nifty, however, failed to close its above its 50-day simple daily moving average (SDMA) placed at 12,120.39. Global cues were positive as some Chinese factories slowly resumed operations amid the national fight against the novel coronavirus outbreak. The S&P BSE Sensex reclaimed 41,000, while the Nifty 50 settled above 12100 levels. Except FMCG, all other sectoral indices ended higher.

## Global Markets

Daimler reported a 64% fall in 2019 net profit despite record high Mercedes-Benz sales as CEO Ola Kaellenius signed off on more than 5 billion euros in legal and restructuring charges. European shares rose to a record high early as a slowdown in the rate of new infections in the coronavirus outbreak provided some relief, although markets still worried over the wider global economic impact. European STOXX 600 index rose 0.7%.

INDEX	ADVANCE	DECLINE	UNCHANGED
NSE	793	972	386
INDEX	ADVANCE	DECLINE	UNCHANGED
BSE	1122	1383	194

## Gainers

LARGECAP	%CHANGE	MIDCAP	%CHANGE
GAIL	+5.91%	RAJESHEXPO	+5.56%
JSWSTEEL	+3.87%	SUNTV	+4.88%
INFRATEL	+3.42%	GODREJIND	+3.77%
NTPC	+3.04%	GLENMARK	+2.78%
MARUTI	+1.93%	RBLBANK	+2.53%

## Losers

LARGECAP	%CHANGE	MIDCAP	%CHANGE
YESBANK	-2.00%	RECLTD	-7.77%
BPCL	-0.88%	HEG	-5.38%
BHARTIARTL	-0.85%	GRAPHITE	-3.76%
M&M	-0.85%	WHIRLPOOL	-3.50%
BRITANNIA	-0.72%	INDIANB	-2.93%

## Nifty



## Indian Markets

INDEX	VALUE	CHANGE	%CHANGE
SENSEX	41216.14	+236.52	+0.58%
NIFTY	12107.90	+76.40	+0.63%
NIFTYBANK	31300.60	+242.45	+0.78%
INDIA VIX	13.8800	-0.33	-2.32%

## International Markets

INDEX	VALUE	CHANGE	%CHANGE
DOW	29276.82	+174.31	+0.60%
NASDAQ	9628.39	+107.88	+1.13%
FTSE	7513.17	+66.29	+0.89%
SHANGHAI	2901.67	+11.18	+0.39%
NIKKEI	23685.98	-142	-0.60%

## OUR PREVIOUS CALLS UPDATE

### Intraday super stars

Date	Stocks	Entry	Exit	P/L
11/02	JSWSTEEL(L)	280	288.40	+6000
11/02	MC DOWELL-N(L)	691.90	685	-1994

### Multibagger

Date	Stock	Entry	Exit	P/L
11/02	INDIGO(L)	1411.5	-	UNEX

### Trifid special

Date	Stock	Entry	Exit	P/L
07/01	RECLTD(L)	153.50	150.45	-5960

## Stock Snippets

**Cipla's** South African arm signed an agreement securing originator and authorized generic brands of an atypical antipsychotic drug, Quetiapine. Cipla to market and distribute the Medicine in South Africa and neighbouring countries.

The US Food & Drug Administration (US FDA) has tentatively approved the abbreviated new drug application (ANDA) filed by **Granules Pharmaceuticals, Inc (GPI)**, for Colchicine Capsules, 0.6 mg.

**Tata Global Beverage** has changed its name to Tata Consumer effective from February 10.

**ITC** share price gained 3 percent on February 11 after company hiked prices of cigarettes by 10-12 percent.

Shares of **Motherson Sumi Systems** rebounded with 1.6 percent gains on February 11 as analysts retained positive stance considering the margin improvement in SMP, though domestic performance was disappointing.

**SBI** rose 2 percent ahead of SEBI nod for the IPO of SBI Cards

## Global Markets

Asian share markets followed Wall Street higher on Tuesday as China's factories struggled to re-open after an extended break. Japan's Nikkei was closed for a holiday, although Nikkei futures (NKc1) traded 0.8% firmer.

Australia stocks were higher after the close on Tuesday, as gains in the IT, Telecoms Services and Industrials sectors led shares higher. The S&P/ASX 200 gained 0.61%.

The Shanghai Composite gained 0.3%, while the Shenzhen Component lost 0.2%.

DATE: 11/02/20

FII/DII	CASH	MTD	YTD
FII	-209.39	-825.11	-1480.26
DII	+344.63	+8161.41	+8347.41

## Sectoral gainers and losers

SECTOR	%CHANGE IN MARKETCAP	ADV	DEC
Media & Entertainment	2.16%	17	17
Power	1.37%	13	14
Consumer Durables	1.27%	10	15
Plastic Products	0.85%	14	14
Metals & Mining	0.69%	39	57
Finance	0.65%	52	62
ETF	0.65%	36	16
Banks	0.64%	22	14
Automobile & Ancillaries	0.53%	39	72
Healthcare	0.48%	56	42
Electricals	0.44%	7	18
Construction Materials	0.40%	22	31
Chemicals	0.09%	39	64
Logistics	0.09%	13	15
Textiles	0.07%	44	55
Real Estate	0.03%	22	29
Software & IT Services	-0.04%	36	48
Infrastructure	-0.07%	23	34
Hospitality	-0.14%	7	18
Capital Goods	-0.18%	30	57
Agri	-0.23%	22	41
FMCG	-0.40%	17	25
Miscellaneous	-1.50%	9	36
Retailing	-1.86%	9	6

## Stocks breakout on moving average

STOCKS	PRICE	30DMA
GAIL	129.15	124.70
INFRATEL	248.80	242.68
AMBUJACEM	212	207.48
GODREJIND	441.90	431.14



HDFC EQ is being forming bullish consolidation on intraday chart and settled near resistance level. The stock may give breakout in coming trade session.

**BUY ABOVE 2441.75 TARGETS 2466.15/2490.60/2515 SL 2417.35**



BATAINDIA EQ reversed on daily chart and settled near the support level. The stock may give lower break down in coming trade session.

**SELL BELOW 1792 TARGETS 1774.10/1756.15/1738.25 SL 1809.90**



HDFC FUT is being forming consolidation near immediate resistance level and settled forming bullish candle on daily chart. The stock fut may surge higher.

**BUY ABOVE 2449.90 TARGETS 2461.90/2473.90 SL 2437.90**



APOLLOHOSP EQ traded higher forming bullish candle on daily chart and settled near the critical resistance level. The stock may surge higher in coming trade session.

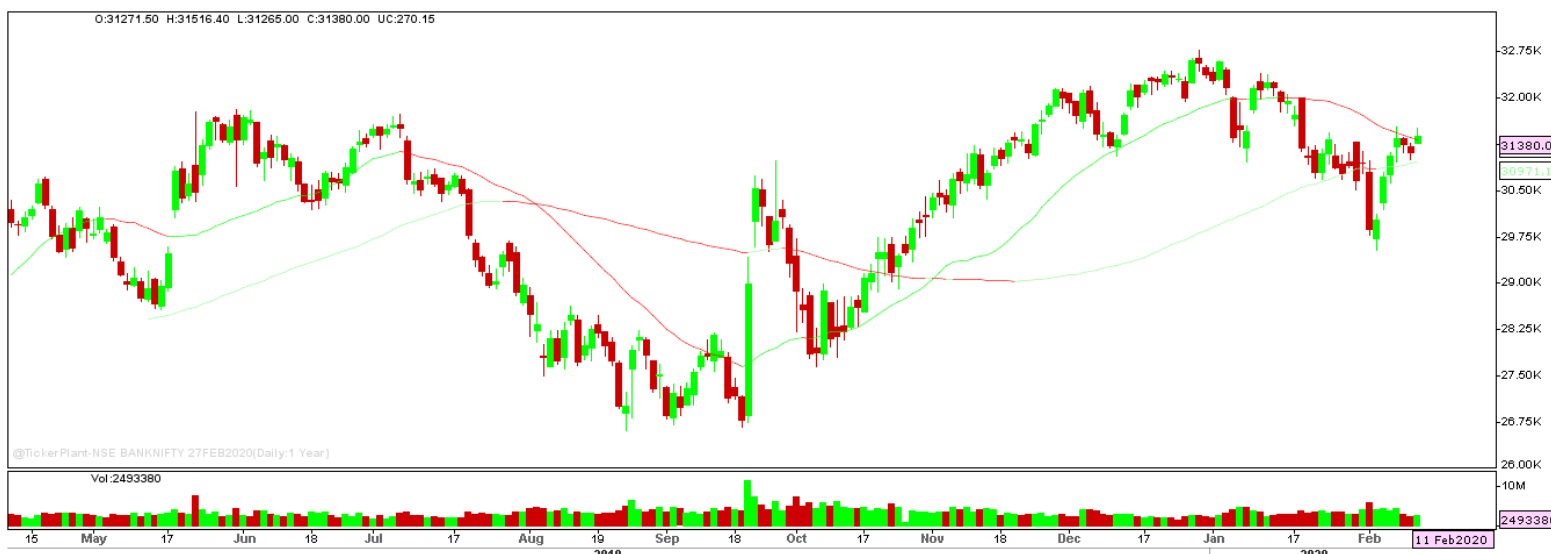
**BUY ABOVE 1705 TARGETS 1739.10 SL 1670.90.**

## Nifty Technical's



Nifty Future surged higher resuming the buy trend on daily chart and settled at 12128. The next key support and resistance for the market is at 12050 and 12200.

## Bank Nifty Technical's



Bank nifty fut too surged higher likewise nifty 50 to close at 31380. The next key support and resistance for the banking index is at 31000 and 31550.

Index	10-FEB-20	11-FEB-20	Change in OI	% Change
NIFTY	13991400	13976925	-14475	-0.10%

SCRIPS IN F&O BAN FOR TRADE  
YESBANK.

## Stocks at 52 Week High

Stocks	New 52 W/H	Previous High
ADANIENT	248.60	245.15
AJANTPHARM	1424	1405
DIVISLAB	2160	2112.45
ESCORTS	882.50	878.50
JINDALSTEL	202.40	202.25

## Stocks Approaching 52 Week High

Stocks	LTP	52W High
DABUR	508.90	518
APOLLOHOSP	1697.95	1717.60
GRANULES	163	167.30
PVR	2043.65	2076.65
ASIANPAINT	1878.10	1896.75

## Stocks rising continuously 2-3 days

Stocks	LTP
UPL	576.65
JSWSTEEL	288.75
IBULHSGFIN	344.95
AUROPHARMA	548.15

## Stocks at 52 Week Low

Stocks	New 52 W/L	Previous Low
BASF	885	920
CSBBANK	177	179
DBCORP	128.65	129.05
ENGINEERSIN	89.60	90
GHCL	176	176.10

## Stocks Approaching 52 Week Low

Stocks	LTP	52W Low
WIPRO	241.25	232.20
MARICO	304.90	299.20
GILLETTE	6389.45	6169.00
HINDZINC	194.80	188.15
ITC	212.60	205.00

## Stocks falling continuously 2-3 days

Stocks	LTP
YESBANK	36.85
M&M	524.05
BRITANNIA	3134.70
SUNPHARMA	418.55

## Event Calendar(10<sup>th</sup> FEBRUARY to 15<sup>th</sup> FEBRUARY 2020)

10/02/20 (Mon)	11/02/20 (Tues)	12/02/20 (Wed)	13/02/20 (Thur)	14/02/20 (Fri)	15/02/20 (Sat)
RESULT: ABAN, BHARATFORG, GAIL, DBL, IOB, GRASIM, MAJESCO, KAJARIACER, RAJESHEXPO, SUNDARMFN, UNIONBANK.	RESULTS: 3MINDIA, COALINDIA, BHEL, BASF, CESC, CRISIL, HEXAWARE, HEG, GULFOILLUB, IDBI, SIEMENS, SYNDIBANK.	RESULT: ABB, ASHOKLEY, UNIONBANK, NAUKRI, HINDALCO, IRCTC, IPCALAB, NBCC, NITCO, P&G, RICOAUTO, TORNTPOWER, VIPIND, ECO DATA: CPI INFLATION DATA.	RESULT: APOLLOHOSP, ATULAUTO, BPCL, DEEPAKFERT, GODREJIND, HINDCOPPER, JAICORP, PHILIPCARB.	RESULT: BALKRISIND, DCM, GLENMARK, IVRCL, KHAITANLTD, MTNL, MMTG, MEP, PFIZER, SAIL, SREINFRA, ECO DATA: WPI INFLATION, FX RESERVE DATA.	

## DISCLAIMER

Trifid Research respects and values the Right to Privacy of each and every individual. We are esteemed by the relationship and by becoming our clients; you have a promise from our side that we shall remain loyal to all our clients and non-clients whose information resides with us. This Privacy Policy of Trifid Research applies to the current clients as well as former clients. Below are the word by word credentials of our Privacy Policy:

1. Your information, whether public or private, will not be sold, rented, exchanged, transferred or given to any company or individual for any reason without your consent.
2. The only use we will be bringing to your information will be for providing the services to you for which you have subscribed to us.
3. Your information given to us represents your identity with us. If any changes are brought in any of the fields of which you have provided us the information, you shall bring it to our notice by either calling us or dropping a mail to us.
4. In addition to the service provided to you, your information (mobile number, E-mail ID etc.) can be brought in use for sending you newsletters, surveys, contest information, or information about any new services of the company which will be for your benefit and while subscribing for our services, you agree that Trifid Research has the right to do so.
5. By subscribing to our services, you consent to our Privacy Policy and Terms of Use.
6. Trifid research does not guarantee or is responsible in any which way, for the trade execution of our recommendations, this is the sole responsibility of the client.
7. Due to the market's volatile nature, the trader may/ may not get appropriate opportunity to execute the trades at the mentioned prices and Trifid Research hold's no liability for any profit/ loss incurred whatsoever in this case.
8. It is the responsibility of the client to view the report timely from our Premium member section on our website: [www.trifidresearch.com](http://www.trifidresearch.com) and the same will also be mailed to this registered email id.
9. Trifid research does not hold any liability or responsibility of delay in mail delivery of reports, as this depends on our mail service provider's network infrastructure.
10. The clients can call us for any query related to buying/selling the securities, based on our recommendations.