

Key equity benchmarks advanced for second day on Wednesday. The Nifty 50 index managed to close above the 12,200 mark. Gains were supported by positive global shares as concerns over the ongoing coronavirus outbreak abated. While the Hindustan Unilever was the best performer, Yes Bank was the worst performer in the 50 share index. Industrial Production for December 2019 and consumer price inflation rate for January 2020 will be declared today, 12 February 2020.

Global Markets

Nissan Motor Co may report its first quarterly loss in more than a decade on Thursday because of slumping sales. European shares hit a record high for the second straight session on Wednesday, as a drop in new coronavirus cases prompted buying in China-focused stocks, even as investors remained wary of the epidemic's economic impact. The pan-European STOXX 600 index (STOXX) rose as much as 0.4%.

INDEX	ADVANCE	DECLINE	UNCHANGED
NSE	726	1069	358
INDEX	ADVANCE	DECLINE	UNCHANGED
BSE	1006	1508	180

Gainers

LARGECAP	%CHANGE	MIDCAP	%CHANGE
HINDUNILVR	+5.08%	IPCALAB	+6.01%
KOTAKBANK	+2.15%	NBCC	+5.40%
EICHERMOT	+1.85%	CASTROLIND	+5.22%
ICICIBANK	+1.79%	MGL	+4.27%
NESTLEIND	+1.77%	IGL	+2.71%

Losers

LARGECAP	%CHANGE	MIDCAP	%CHANGE
YESBANK	-4.48%	HEG	-12.58%
INFRADEL	-1.47%	BHEL	-5.71%
SBIN	-1.22%	GRAPHITE	-5.52%
INDUSINDBK	-1.21%	RAJESHEXPO	-4.10%
BPCL	-1.14%	INDIANB	-3.39%

Nifty



Indian Markets

INDEX	VALUE	CHANGE	%CHANGE
SENSEX	41565.90	+349.76	+0.85%
NIFTY	12201.20	+93.30	+0.77%
NIFTYBANK	31492.90	+192.30	+0.61%
INDIA VIX	13.5650	-0.32	-2.26%

International Markets

INDEX	VALUE	CHANGE	%CHANGE
DOW	29276.34	-0.48	-0.00%
NASDAQ	9638.94	+10.55	+0.11%
FTSE	7530.35	+30.91	+0.41%
SHANGHAI	2926.90	+25.23	+0.87%
NIKKEI	23861.21	+175.23	+1.51%

OUR PREVIOUS CALLS UPDATE

Intraday super stars

Date	Stocks	Entry	Exit	P/L
12/02	HDFC(L)	2441.75	2466.1	+1998
12/02	BATAINDIA(L)	1792	-	UNEX

Multibagger

Date	Stock	Entry	Exit	P/L
12/02	HDFC(L)	2449.9	2473.9	+6000

Trifid special

Date	Stock	Entry	Exit	P/L
12/01	APOLLOHOSP(L)	1705	1670.90	-6000

Stock Snippets

Wockhardt in its board meeting held on February 12 has considered and approved the transfer of business to Dr Reddy's Laboratories on a slump sale basis.

Sun Pharma Advanced received complete response letter for Taclantis from USFDA

IRB Infrastructure Developers Ltd (IRB Infra) informed the exchanges today that the Project implemented by wholly-owned SPV of the Company viz. IRB Westcoast Tollway Limited (SPV), has been issued a Provisional Completion Certificate by the Competent Authority.

SBI and ICICI Bank have filed proceedings against Mercator under the Insolvency Act to recover the dues.

Reliance Naval & Engineering received a show-cause notice from the Ministry of Defense, for termination of contract relating to 5 Naval Offshore Patrol Vessels.

Moody's changed its outlook on **IndusInd Bank** to 'Negative' from 'Stable' to account for the risk of further asset quality deterioration.

Global Markets

Japan stocks were higher after the close on Wednesday, as gains in the Paper & Pulp, Railway & Bus and Real Estate sectors led shares higher. The Nikkei 225 rose 0.74%.

China's Shanghai Composite slipped 0.1%. The Shenzhen Component gained 0.6%. Hong Kong's Hang Seng Index also rose 0.5%.

Australia stocks were higher after the close on Wednesday, as gains in the Financials, Consumer Discretionary and Healthcare sectors led shares higher. The S&P/ASX 200 gained 0.47%

DATE: 12/02/20

FII/DII	CASH	MTD	YTD
FII	+48.81	-776.30	-1431.45
DII	+339.19	+8500.60	+8686.60

Sectoral gainers and losers

SECTOR	%CHANGE IN MARKETCAP	ADV	DEC
Retailing	3.10%	8	7
FMCG	2.30%	20	22
Alcohol	1.79%	8	2
Agri	1.03%	38	20
Software & IT Services	0.69%	38	47
Automobile & Ancillaries	0.57%	43	69
Banks	0.29%	6	33
Metals & Mining	0.19%	37	57
Infrastructure	0.19%	15	42
ETF	0.11%	33	21
Finance	0.04%	34	78
Healthcare	0.00%	37	60
Chemicals	-0.09%	33	75
Consumer Durables	-0.11%	12	12
Plastic Products	-0.21%	7	20
Power	-0.27%	9	18
Media & Entertainment	-0.32%	13	21
Construction Materials	-0.36%	15	37
Miscellaneous	-0.40%	25	18
Logistics	-0.48%	8	19
Real Estate	-0.59%	19	34
Diamond & Jewellery	-0.63%	6	6
Textiles	-0.71%	27	73
Capital Goods	-2.37%	33	52

Stocks breakout on moving average

STOCKS	PRICE	30DMA
CEATLTD	1030.35	1000.34
ICRA	2980.45	2943.99
OMAXE	155.90	155.29
GILLETTE	6413.70	6400.47



BAJFINANCE EQ is being trading higher on bullish trend and settled near the resistance level. The stock may give breakout in coming trade session.

BUY ABOVE 4785 TARGETS 4832.85/4880/4928.55 SL 4737.15



MCDOWELL-N EQ surged higher forming bullish hammer candle on daily chart to close near the resistance level. The stock may give breakout in coming trade session.

BUY ABOVE 695 TARGETS 701.95/708.90/715.85 SL 688.05



HDFCBANK FUT is being forming consolidation near immediate resistance level and settled forming bullish candle on daily chart. The stock fut may surge higher.

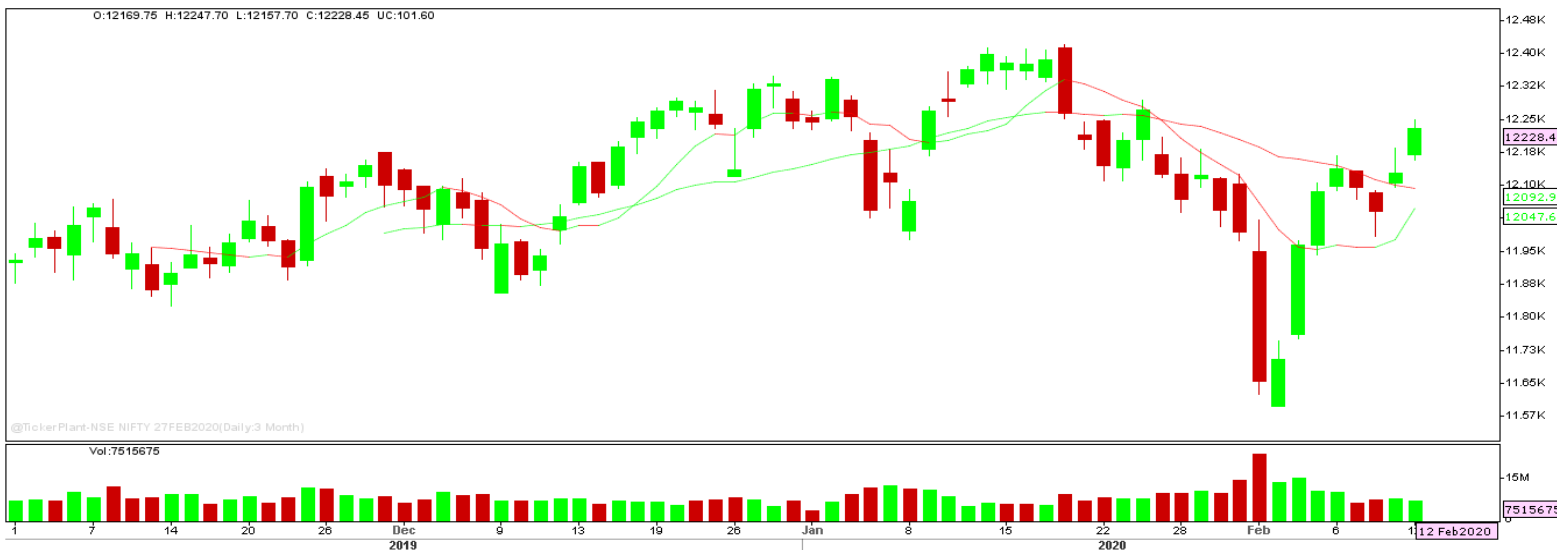
BUY ABOVE 1256 TARGETS 1262/1268 SL 1250



ESCORTS EQ traded higher forming bullish candle on daily chart and settled near the critical resistance level. The stock may surge higher in coming trade session.

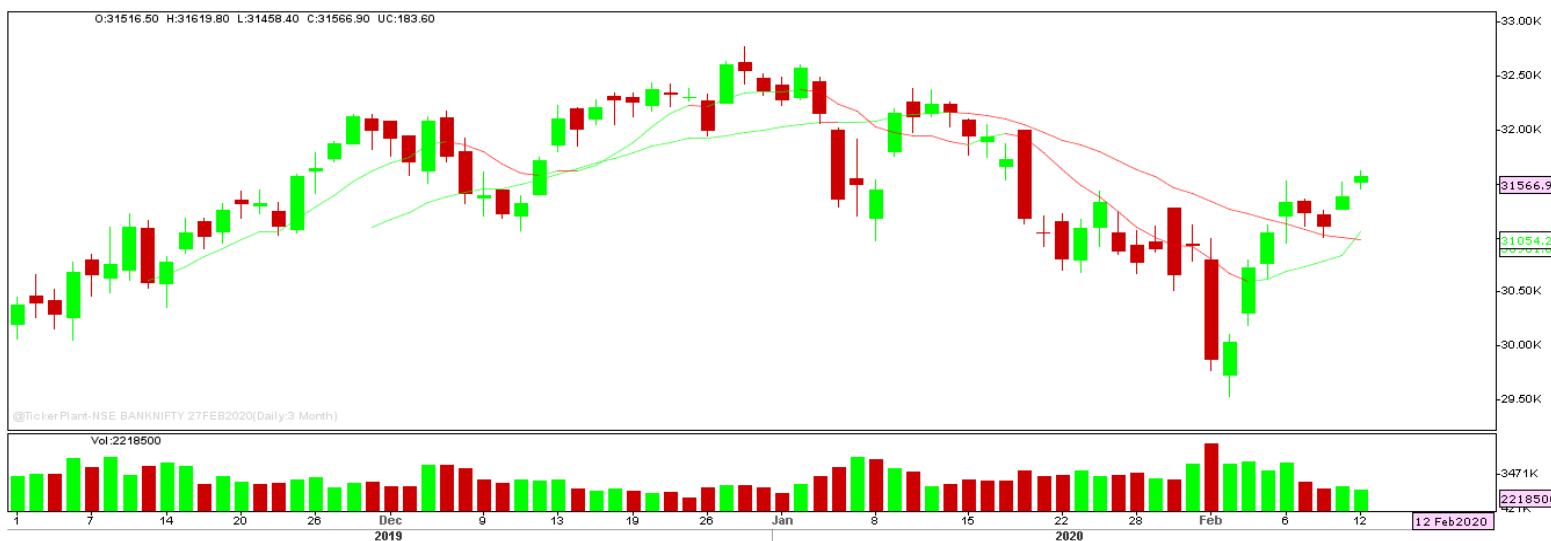
BUY ABOVE 882.50 TARGETS 900.15 SL 864.85

Nifty Technical's



Nifty Future surged higher resuming the buy trend on daily chart and settled at 12228.45. The next key support and resistance for the market is at 12150 and 12325.

Bank Nifty Technical's



Bank nifty fut too surged higher likewise nifty 50 to close at 31566.90. The next key support and resistance for the banking index is at 31360 and 31725.

Index	11-FEB-20	12-FEB-20	Change in OI	% Change
NIFTY	13976925	13735800	+194925	+1.44%

SCRIPS IN F&O BAN FOR TRADE
YESBANK.

Stocks at 52 Week High

Stocks	New 52 W/H	Previous High
ADANIENT	251.40	248.60
ASIANPAINT	1916.70	1896.75
DIVISLAB	2179.95	2160
IPCALAB	1338.95	1292.80
LTI	2045	2008.90

Stocks Approaching 52 Week High

Stocks	LTP	52W High
ICICIBANK	549.30	552.20
APOLLOHOSP	1683.60	1717.60
ESCORTS	878.80	882.50
SRF	4163.55	4195.05
PIDILITIND	1589.20	1599

Stocks rising continuously 2-3 days

Stocks	LTP
JSWSTEEL	293.70
KOTAKBANK	1714.90
ICICIBANK	549.30
WIPRO	244.45

Stocks at 52 Week Low

Stocks	New 52 W/L	Previous Low
BHEL	35.80	37.90
CSBBANK	168	177
DBCORP	128.55	128.65
ENGINERSIN	89.55	89.60
PNB	55.15	55.70

Stocks Approaching 52 Week Low

Stocks	LTP	52W Low
WIPRO	244.45	232.20
MARICO	305.60	299.20
GILLETTE	6413.70	6169.00
HINDZINC	192.25	188.15
ITC	213.05	205.00

Stocks falling continuously 2-3 days

Stocks	LTP
YESBANK	35.20
INDUSINDBK	1277.40
BPCL	474.75
IOC	115.10

Event Calendar(10th FEBRUARY to 15th FEBRUARY 2020)

10/02/20 (Mon)	11/02/20 (Tues)	12/02/20 (Wed)	13/02/20 (Thur)	14/02/20 (Fri)	15/02/20 (Sat)
RESULT: ABAN, BHARATFORG, GAIL, DBL, IOB, GRASIM, MAJESCO, KAJARIACER, RAJESHEXPO, SUNDARMFN, UNIONBANK.	RESULTS: 3MINDIA, COALINDIA, BHEL, BASF, CESC, CRISIL, HEXAWARE, HEG, GULFOILLUB, IDBI, SIEMENS, SYNDIBANK.	RESULT: ABB, ASHOKLEY, UNIONBANK, NAUKRI, HINDALCO, IRCTC, IPCALAB, NBCC, NITCO, P&G, RICOAUTO, TORNTPOWER, VIPIND, ECO DATA: CPI INFLATION DATA.	RESULT: APOLLOHOSP, ATULAUTO, BPCL, DEEPAKFERT, GODREJIND, HINDCOPPER, JAICORP, PHILIPCARB.	RESULT: BALKRISIND, DCM, GLENMARK, IVRCL, KHAITANLTD, MTNL, MMTG, MEP, PFIZER, SAIL, SREINFRA, ECO DATA: WPI INFLATION, FX RESERVE DATA.	

DISCLAIMER

Trifid Research respects and values the Right to Privacy of each and every individual. We are esteemed by the relationship and by becoming our clients; you have a promise from our side that we shall remain loyal to all our clients and non-clients whose information resides with us. This Privacy Policy of Trifid Research applies to the current clients as well as former clients. Below are the word by word credentials of our Privacy Policy:

1. Your information, whether public or private, will not be sold, rented, exchanged, transferred or given to any company or individual for any reason without your consent.
2. The only use we will be bringing to your information will be for providing the services to you for which you have subscribed to us.
3. Your information given to us represents your identity with us. If any changes are brought in any of the fields of which you have provided us the information, you shall bring it to our notice by either calling us or dropping a mail to us.
4. In addition to the service provided to you, your information (mobile number, E-mail ID etc.) can be brought in use for sending you newsletters, surveys, contest information, or information about any new services of the company which will be for your benefit and while subscribing for our services, you agree that Trifid Research has the right to do so.
5. By subscribing to our services, you consent to our Privacy Policy and Terms of Use.
6. Trifid research does not guarantee or is responsible in any which way, for the trade execution of our recommendations, this is the sole responsibility of the client.
7. Due to the market's volatile nature, the trader may/ may not get appropriate opportunity to execute the trades at the mentioned prices and Trifid Research hold's no liability for any profit/ loss incurred whatsoever in this case.
8. It is the responsibility of the client to view the report timely from our Premium member section on our website: www.trifidresearch.com and the same will also be mailed to this registered email id.
9. Trifid research does not hold any liability or responsibility of delay in mail delivery of reports, as this depends on our mail service provider's network infrastructure.
10. The clients can call us for any query related to buying/selling the securities, based on our recommendations.