

Key market barometers ended with small losses on Thursday. While private banks dragged the indices lower, gains in IT and pharma shares provided support. Trading was volatile due to expiry of weekly index options on the NSE. The sentiment was affected by weak domestic economic data. Shares across the globe were under pressure as the death toll from the coronavirus in mainland China spiked 23% Wednesday amid new counting methods adopted by Chinese health officials.

Global Markets

Nissan Motor Co cut its annual operating profit forecast by 43%, hit by a slump in vehicle sales and heaping more pressure on new management to fix a company. European stock markets pushed lower Thursday, as a jump in the number of people recorded as being affected by the coronavirus in China prompted a rush to safe havens. This comes as the corporate earnings session enters full flow. DAX lost 55 points, or 0.4%.

INDEX	ADVANCE	DECLINE	UNCHANGED
NSE	790	986	374
INDEX	ADVANCE	DECLINE	UNCHANGED
BSE	1057	1432	157

Gainers

LARGECAP	%CHANGE	MIDCAP	%CHANGE
YESBANK	+6.39%	IPCALAB	+7.16%
DRREDDY	+3.95%	AJANTPHARM	+5.05%
ZEEL	+2.56%	PFIZER	+3.13%
SBIN	+2.28%	BHEL	+1.93%
TITAN	+2.25%	CASTROLIND	+1.69%

Losers

LARGECAP	%CHANGE	MIDCAP	%CHANGE
INDUSINDBK	-3.57%	IGL	-4.81%
TATASTEEL	-1.77%	MGL	-2.71%
NTPC	-1.71%	EMAMILTD	-2.36%
ICICIBANK	-1.68%	PNBHOUSING	-2.13%
KOTAKBANK	-1.48%	RBLBANK	-1.99%

Nifty



Indian Markets

INDEX	VALUE	CHANGE	%CHANGE
SENSEX	41459.79	-106.11	-0.26%
NIFTY	12174.65	-26.55	-0.22%
NIFTYBANK	31230.25	-262.65	-0.83%
INDIA VIX	13.4650	-0.16	-1.15%

International Markets

INDEX	VALUE	CHANGE	%CHANGE
DOW	29551.42	+275.08	+0.94%
NASDAQ	9725.96	+87.02	+0.90%
FTSE	7430.20	-104.17	-1.38%
SHANGHAI	2906.07	-20.83	-0.71%
NIKKEI	23827.73	-33.48	-0.14%

OUR PREVIOUS CALLS UPDATE

Intraday super stars

Date	Stocks	Entry	Exit	P/L
13/02	MCDOWELL-N(L)	695	708.90	+4000
13/02	BAJFINANCE(L)	4785	4795	+417

Multibagger

Date	Stock	Entry	Exit	P/L
13/02	HDFCBANK(L)	1256	-	UNEX

Trifid special

Date	Stock	Entry	Exit	P/L
12/01	APOLLOHOSP(L)	1705	1670.90	-6000

Stock Snippets

Zydus Cadila has received the final approval from the USFDA to market Mesalamine Suppositories for rectal use, 1000 mg.

Welspun Corp share price declined 3 percent on February 13 after company closed its step down non-operating company in the UAE with effect from February 11, 2020.

Bharat Heavy Electricals (BHEL) share price rose nearly 2 percent on February 13 after company signed MoU with Russian firm.

PNC Infratech bags a hybrid annuity highway project worth Rs 2,052 crore in Uttar Pradesh.

General Insurance Corporation of India obtained a license from Bank of Russia Federation for the commencement of reinsurance business

Yes Bank delay in submitting Q3 earnings. Bank received non-binding expressions of interest from several prominent investors.

Aurobindo Pharma completed the acquisition of certain business assets of Profectus BioSciences.

Global Markets

Asian markets were mixed on Thursday. Chinese stocks underperformed amid a spike in the number of new diagnosed coronavirus cases in the Hubei province.

Japan stocks were lower after the close on Thursday, as losses in the Paper & Pulp, Railway & Bus and Real Estate sectors led shares lower. The Nikkei 225 fell 0.14%.

Australia stocks were higher after the close on Thursday, as gains in the Utilities, Consumer Discretionary and Energy sectors led shares higher. The S&P/ASX 200 rose 0.21%.

DATE: 13/02/20

FII/DII	CASH	MTD	YTD
FII	+1061.39	+285.09	-370.06
DII	-960.48	+7540.12	+7726.12

Sectoral gainers and losers

SECTOR	%CHANGE IN MARKETCAP	ADV	DEC
Paper	2.29%	13	10
Healthcare	0.87%	45	49
Software & IT Services	0.75%	33	52
Electricals	0.65%	10	14
Agri	0.60%	32	29
Media & Entertainment	0.32%	15	19
FMCG	0.26%	18	24
Consumer Durables	0.11%	15	10
Telecom	0.05%	10	11
Plastic Products	0.04%	15	13
Textiles	-0.11%	40	54
Capital Goods	-0.11%	33	52
Miscellaneous	-0.14%	21	23
Diversified	-0.16%	9	12
ETF	-0.17%	28	30
Automobile & Ancillaries	-0.20%	41	72
Power	-0.20%	9	17
Finance	-0.26%	49	64
Infrastructure	-0.30%	22	37
Construction Materials	-0.34%	19	35
Real Estate	-0.43%	23	28
Chemicals	-0.44%	45	60
Banks	-0.68%	13	27
Metals & Mining	-0.75%	36	56

Stocks breakout on moving average

STOCKS	PRICE	30DMA
RSWM	109	98.08
GODREJIND	435.25	431.49
TCS	2191.95	2176.75
BOSCH	14682.95	14573.46



JSWSTEEL EQ is being trading higher on bullish trend and settled near the resistance level. The stock may give breakout in coming trade session.

BUY ABOVE 295.40 TARGETS 298.35/301.30/304.25 SL 292.45



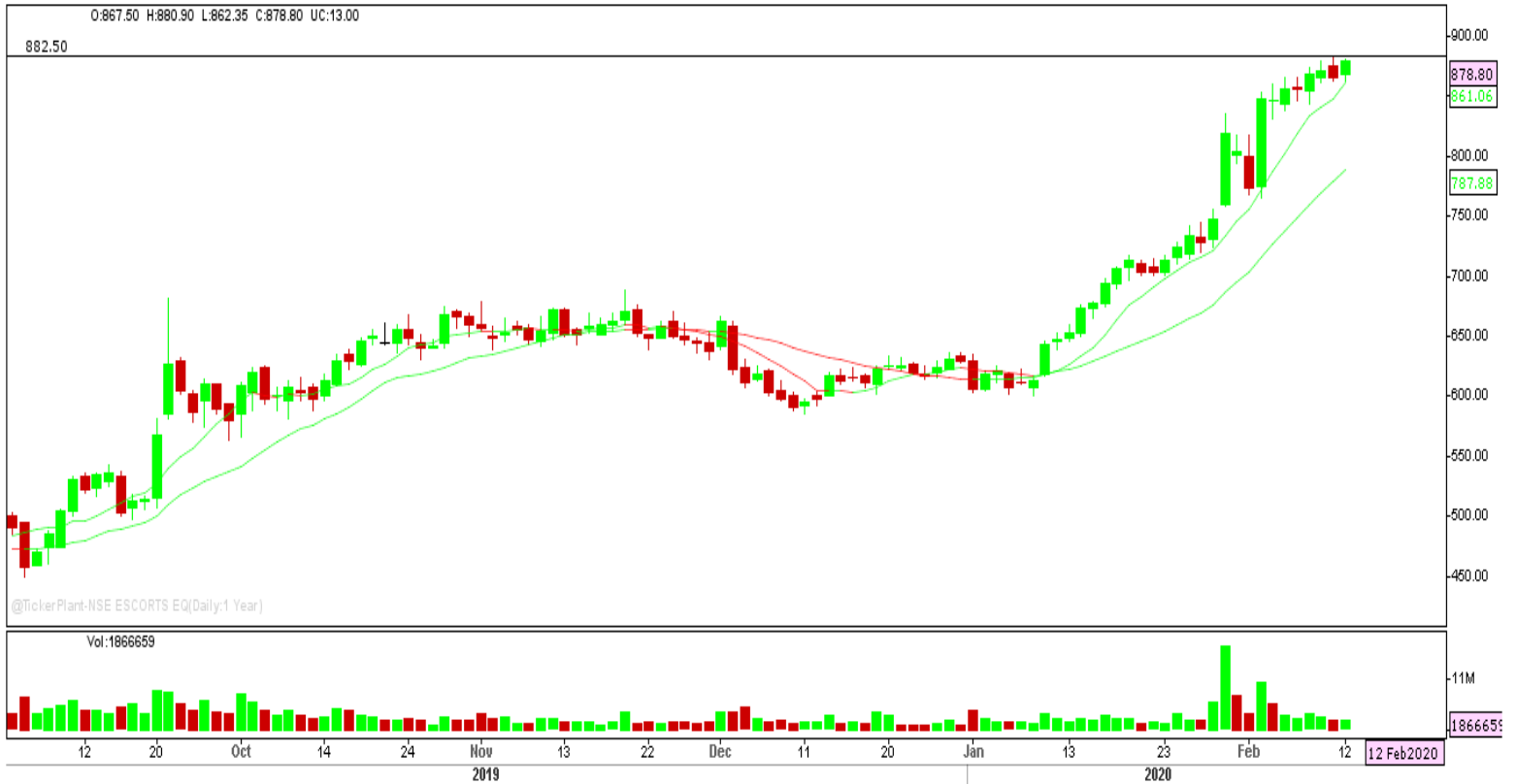
PNBHOUSING EQ is being trading on its sell trend and settled near the support level. The stock may fall further in coming trade session.

SELL BELOW 410 TARGETS 405.90/401.80/397.70 SL 414.10



TATASTEEL FUT is being forming consolidation near immediate support level and settled forming bearish candle on daily chart. The stock fut may fall further.

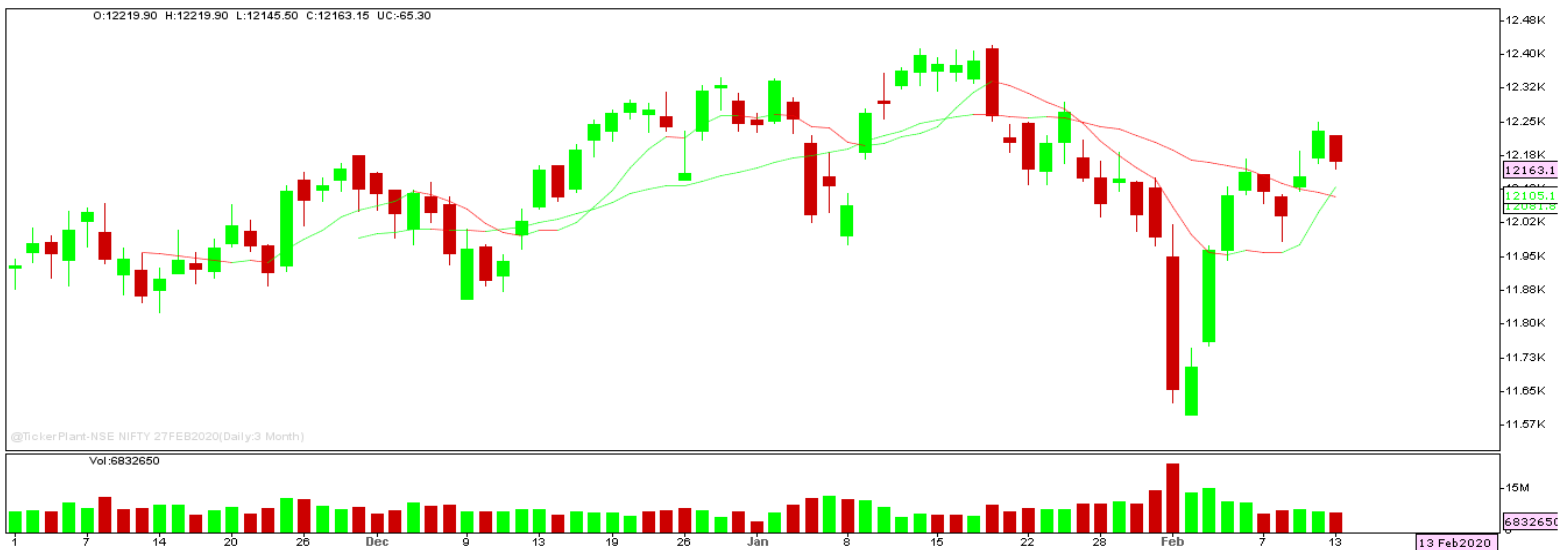
SELL BELOW 440 TARGETS 438/436 SL 442



ESCORTS EQ traded higher forming bullish candle on daily chart and settled near the critical resistance level. The stock may surge higher in coming trade session.

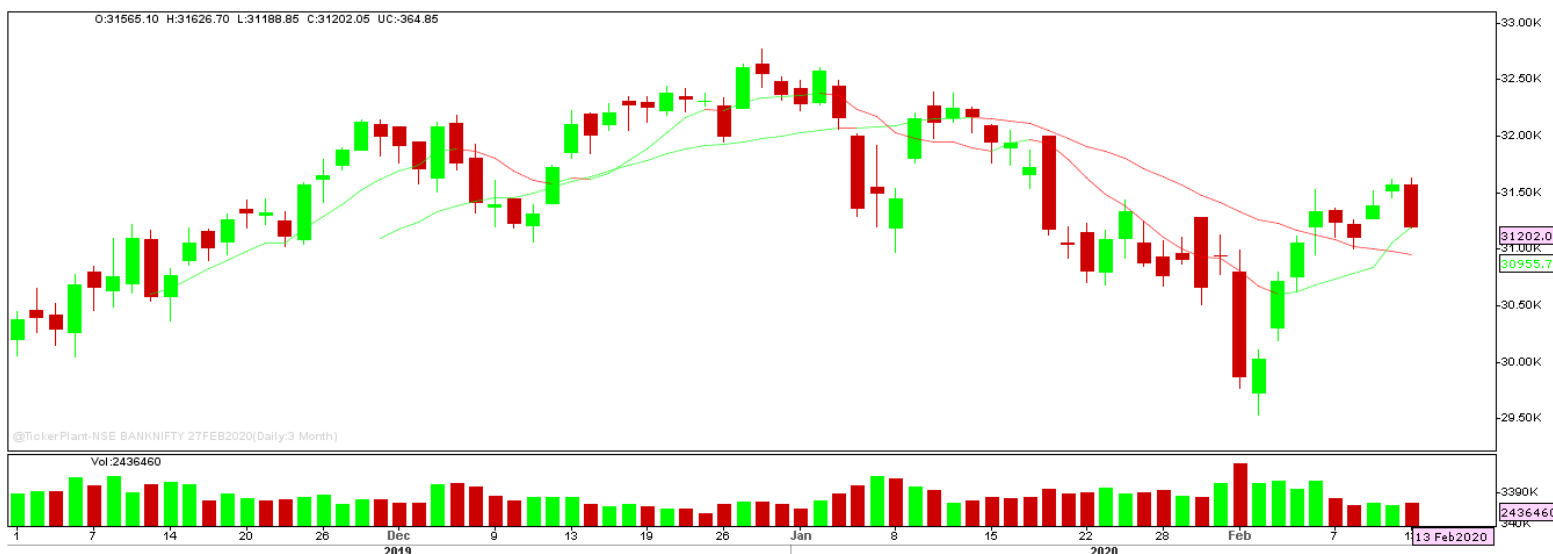
BUY ABOVE 882.50 TARGETS 900.15 SL 864.85

Nifty Technical's



Nifty Future tanked forming bearish candle on daily chart to close at 12163.15. The next key support and resistance for the market is at 12100 and 12250.

Bank Nifty Technical's



Bank nifty fut too tanked and remained more bearish than nifty 50 to close forming bearish engulfing candle on daily chart to close at 31202. The next key support and resistance for the banking index is at 31000 and 31460.

Index	12-FEB-20	13-FEB-20	Change in OI	% Change
NIFTY	13212000	14117100	+905100	+6.85%

SCRIPS IN F&O BAN FOR TRADE
YESBANK.

Stocks at 52 Week High

Stocks	New 52 W/H	Previous High
ADANIENT	252.75	251.40
AJANTPHARM	1483.40	1424
BAJFINANCE	4800.60	4785
DMART	2560	2537.45
DRREDDY	3336.90	3277.60

Stocks Approaching 52 Week High

Stocks	LTP	52W High
ICICIBANK	541.00	552.20
APOLLOHOSP	1695.50	1717.60
DIVISLAB	2155.80	2179.95
SRF	4149.15	4195.05
PIDILITIND	1578.00	1599

Stocks rising continuously 2-3 days

Stocks	LTP
ESCORTS	888.55
DRREDDY	3324.60
ZEEL	237.15
INFY	792.25

Stocks at 52 Week Low

Stocks	New 52 W/L	Previous Low
BASF	875	885
CSBBANK	163.20	168
DEEPIND	91.55	92.20
ENGINERSIN	88.70	89.55
INDIANB	87.85	89.10

Stocks Approaching 52 Week Low

Stocks	LTP	52W Low
WIPRO	243.75	232.20
MARICO	303.40	299.20
GILLETTE	6355.50	6169.00
HINDZINC	190.75	188.15
ITC	211.90	205.00

Stocks falling continuously 2-3 days

Stocks	LTP
INDUSINDBK	1230.75
TATASTEEL	441.25
NTPC	115.15
HDFC	2403.65

Event Calendar(10th FEBRUARY to 15th FEBRUARY 2020)

10/02/20 (Mon)	11/02/20 (Tues)	12/02/20 (Wed)	13/02/20 (Thur)	14/02/20 (Fri)	15/02/20 (Sat)
RESULT: ABAN, BHARATFORG, GAIL, DBL, IOB, GRASIM, MAJESCO, KAJARIACER, RAJESHEXPO, SUNDARMFN, UNIONBANK.	RESULTS: 3MINDIA, COALINDIA, BHEL, BASF, CESC, CRISIL, HEXAWARE, HEG, GULFOILLUB, IDBI, SIEMENS, SYNDIBANK.	RESULT: ABB, ASHOKLEY, UNIONBANK, NAUKRI, HINDALCO, IRCTC, IPCALAB, NBCC, NITCO, P&G, RICOAUTO, TORNTPOWER, VIPIND, ECO DATA: CPI INFLATION DATA.	RESULT: APOLLOHOSP, ATULAUTO, BPCL, DEEPAKFERT, GODREJIND, HINDCOPPER, JAICORP, PHILIPCARB.	RESULT: BALKRISIND, DCM, GLENMARK, IVRCL, KHAITANLTD, MTNL, MMTG, MEP, PFIZER, SAIL, SREINFRA, ECO DATA: WPI INFLATION, FX RESERVE DATA.	

DISCLAIMER

Trifid Research respects and values the Right to Privacy of each and every individual. We are esteemed by the relationship and by becoming our clients; you have a promise from our side that we shall remain loyal to all our clients and non-clients whose information resides with us. This Privacy Policy of Trifid Research applies to the current clients as well as former clients. Below are the word by word credentials of our Privacy Policy:

1. Your information, whether public or private, will not be sold, rented, exchanged, transferred or given to any company or individual for any reason without your consent.
2. The only use we will be bringing to your information will be for providing the services to you for which you have subscribed to us.
3. Your information given to us represents your identity with us. If any changes are brought in any of the fields of which you have provided us the information, you shall bring it to our notice by either calling us or dropping a mail to us.
4. In addition to the service provided to you, your information (mobile number, E-mail ID etc.) can be brought in use for sending you newsletters, surveys, contest information, or information about any new services of the company which will be for your benefit and while subscribing for our services, you agree that Trifid Research has the right to do so.
5. By subscribing to our services, you consent to our Privacy Policy and Terms of Use.
6. Trifid research does not guarantee or is responsible in any which way, for the trade execution of our recommendations, this is the sole responsibility of the client.
7. Due to the market's volatile nature, the trader may/ may not get appropriate opportunity to execute the trades at the mentioned prices and Trifid Research hold's no liability for any profit/ loss incurred whatsoever in this case.
8. It is the responsibility of the client to view the report timely from our Premium member section on our website: www.trifidresearch.com and the same will also be mailed to this registered email id.
9. Trifid research does not hold any liability or responsibility of delay in mail delivery of reports, as this depends on our mail service provider's network infrastructure.
10. The clients can call us for any query related to buying/selling the securities, based on our recommendations.