

Key benchmark indices ended lower on Friday. Trading was volatile after the Supreme Court on Friday initiated contempt proceedings against telecom companies for non-payment of Adjusted Gross Revenue (AGR) dues and directed that all directors of the companies be present at the next hearing. The matter will be heard next on March 17. Global shares were mixed as investors monitored China's coronavirus epidemic and updates on how badly it could dent growth in the world's second-largest economy.

Global Markets

The U.S. government increase tariffs on aircraft imported from the European Union to 15% from 10%, ratcheting up pressure on Brussels in a nearly 16-year transatlantic dispute over aircraft subsidies. U.S. stocks were mixed after the close on Friday, as gains in the Utilities, Financials and Technology sectors led shares higher while losses in the Oil & Gas, Consumer Services and Telecoms sectors led shares lower.

INDEX	ADVANCE	DECLINE	UNCHANGED
NSE	636	1198	108
INDEX	ADVANCE	DECLINE	UNCHANGED
BSE	912	1628	169

Gainers

LARGECAP	%CHANGE	MIDCAP	%CHANGE
YESBANK	+5.38%	MINDTREE	+2.49%
BHARTIARTL	+4.38%	GLENMARK	+1.89%
UPL	+2.46%	MPHASIS	+1.69%
BPCL	+1.72%	GSPL	+1.43%
HCLTECH	+1.58%	SRF	+1.06%

Losers

LARGECAP	%CHANGE	MIDCAP	%CHANGE
GAIL	-5.49%	PFIZER	-8.64%
INFRADEL	-5.45%	GODREJIND	-5.74%
INDUSINDBK	-3.72%	INDIANB	-3.63%
EICHERMOT	-3.08%	EMAMILTD	-3.52%
POWERGRID	-2.97%	GRAPHITE	-3.36%

Nifty



Indian Markets

INDEX	VALUE	CHANGE	%CHANGE
SENSEX	41257.74	-202.05	-0.49%
NIFTY	12113.45	-61.20	-0.50%
NIFTYBANK	30834.80	-395.45	-1.27%
INDIA VIX	13.6150	+0.24	+1.83%

International Markets

INDEX	VALUE	CHANGE	%CHANGE
DOW	39398.08	-25.23	-0.08%
NASDAQ	9731.18	+19.21	+0.20%
FTSE	7409.13	-42.90	-0.58%
SHANGHAI	2917.01	+10.94	+0.38%
NIKKEI	23687.59	-140.14	-0.59%

OUR PREVIOUS CALLS UPDATE

Intraday super stars

Date	Stocks	Entry	Exit	P/L
14/02	JSWSTEEL(L)	295.40	292.45	-1997
14/02	PNBHOUSING(S)	410	-	UNEX

Multibagger

Date	Stock	Entry	Exit	P/L
14/02	TATASTEEL(S)	440	436	+6000

Trifid special

Date	Stock	Entry	Exit	P/L
12/01	APOLLOHOSP(L)	1705	1670.90	-6000

Stock Snippets

Mahindra EPC Irrigation Limited (Formerly known as EPC Industries Limited), one of the major players in the Micro Irrigation Industry in the country, has announced Listing of its shares on National Stock Exchange of India Limited (NSE) w.e.f. February 14, 2020, besides existing listing on BSE Limited.

With all struggles to manage its wings in airline segment, **Jet Airways**, on Thursday has given a clarification to the exchanges on a report filed by MoneyControl, which said that 'I-T Dept probes Jet Airways-Godrej Buildcon land development deal'.

GAIL (India) recently launched an online portal allowing third-parties to book natural gas capacity online. The company which owns 70% of the nation's network, that is, 11,400km of natural gas pipelines, has allowed third-party access to natural gas pipelines since 2004.

PVR, India's leading multiplex chain is leading the race to acquire Wave Cinemas, as per the ET report.

Laurus Labs received the USFDA approval for Metformin Hydrochloride tablets, which are used for treatment of diabetes.

Global Markets

France stocks were lower after the close on Friday, as losses in the Foods & Drugs, Gas & Water and General Financial sectors led shares lower. The CAC 40 lost 0.39%, while the SBF 120 index fell 0.26%.

Denmark stocks were higher after the close on Friday, as gains in the Real Estate, Healthcare and Consumer Goods sectors led shares higher. The OMX Copenhagen 20 rose 0.84% to hit a new all time high.

Germany stocks were mixed as gains in the Basic Resources, Financial Services and Utilities sectors led shares higher while losses in the Food & Beverages, Retail and Industrials sectors led shares lower. The DAX declined 0.01%, while the MDAX index climbed 0.14%, and the TecDAX index declined 0.44%.

DATE: 14/02/20

FII/DII	CASH	MTD	YTD
FII	-704.92	-424.83	-1074.98
DII	+219.54	+7759.66	+7945.66

Sectoral gainers and losers

SECTOR	%CHANGE IN MARKETCAP	ADV	DEC
Telecom	2.21%	7	14
Chemicals	0.30%	38	67
Miscellaneous	0.12%	12	35
Plastic Products	-0.01%	7	18
Logistics	-0.04%	12	15
Software & IT Services	-0.14%	30	55
Media & Entertainment	-0.14%	14	20
Consumer Durables	-0.21%	12	14
Hospitality	-0.23%	9	16
Healthcare	-0.31%	41	55
Electricals	-0.36%	6	18
Infrastructure	-0.37%	16	44
Diversified	-0.38%	10	11
Finance	-0.41%	42	75
Agri	-0.46%	14	51
Construction Materials	-0.57%	21	34
Automobile & Ancillaries	-0.99%	40	76
Real Estate	-1.00%	17	37
Textiles	-1.15%	40	62
Capital Goods	-1.18%	27	60
FMCG	-1.24%	8	33
Metals & Mining	-1.25%	26	66
ETF	-1.25%	14	39
Power	-2.20%	6	24

Stocks breakout on moving average

STOCKS	PRICE	30DMA
IGARASHI	348.25	325.37
TVTODAY	252.15	244.85
NIITLTD	103.20	99.83
BPCL	476.75	470.42



TATAMOTORS EQ is being trading lower taking the resistance of drawn trend line and settled near the support level forming bearish consolidation on daily chart. The stock may break down lower in coming trade session.

SELL BELOW 168 TARGETS 166.30/164.65/162.95 SL 169.65



VEDL EQ is being trading on its sell trend and settled near the support level. The stock may fall further in coming trade session.

SELL BELOW 140.20 TARGETS 138.80/137.40/136 SL 141.60



PIDILITIND FUT is being forming consolidation near immediate support level and settled forming bearish reversal candle on daily chart. The stock fut may fall further.

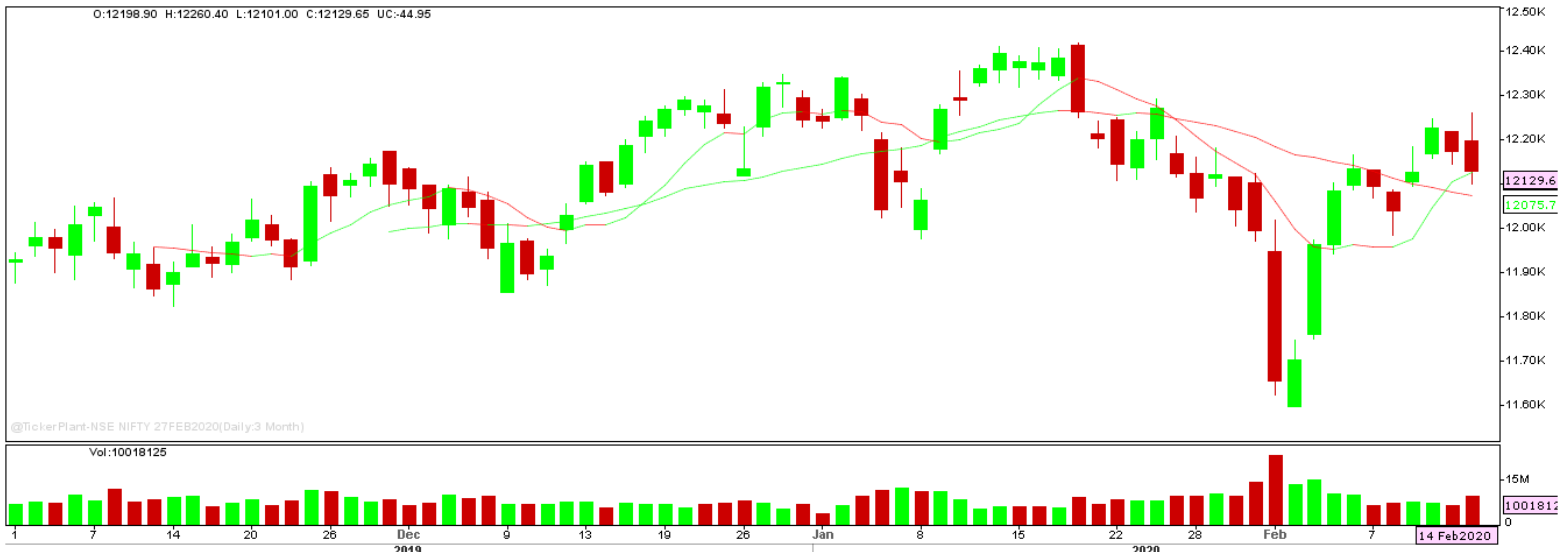
SELL BELOW 1580 TARGETS 1574/1568 SL 1586



ESCORTS EQ traded higher forming bullish candle on daily chart and settled near the critical resistance level. The stock may surge higher in coming trade session.

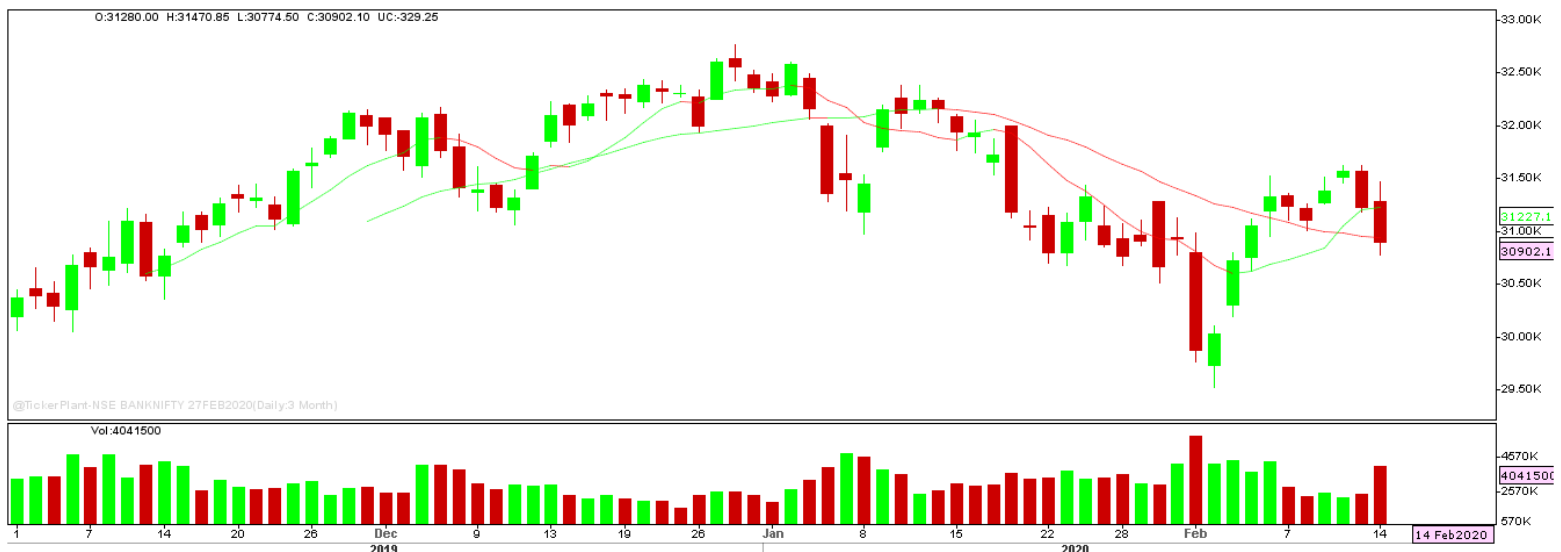
BUY ABOVE 882.50 TARGETS 900.15 SL 864.85

Nifty Technical's



Nifty Future tanked forming bearish candle on daily chart to close at 12129.65. The next key support and resistance for the market is at 12050 and 12250.

Bank Nifty Technical's



Bank nifty fut too tanked and remained more bearish than nifty 50 to close forming bearish engulfing candle on daily chart to close at 30902.10. The next key support and resistance for the banking index is at 30600 and 31250.

Index	13-FEB-20	14-FEB-20	Change in OI	% Change
NIFTY	13212000	12974475	-312375	-2.41%

SCRIPS IN F&O BAN FOR TRADE
YESBANK.

Stocks at 52 Week High

Stocks	New 52 W/H	Previous High
ADANIENT	258.60	252.75
APOLLOHOSP	1747.70	1717.60
BAJFINANCE	4815.00	4800.60
BHARTIARTL	567.55	552.80
DIVISLAB	2190	2179.95

Stocks Approaching 52 Week High

Stocks	LTP	52W High
ICICIBANK	545.80	552.20
LTI	2032.50	2050
DRREDDY	3304.30	3336.90
ESCORTS	883.05	894.50
TECHM	834.15	846.50

Stocks rising continuously 2-3 days

Stocks	LTP
ZEEL	238.75
YESBANK	38.90
BHARTIARTL	565.00
UPL	591.65

Stocks at 52 Week Low

Stocks	New 52 W/L	Previous Low
BASF	870	875
BHARATGEAR	53.55	54.45
DBCORP	124.95	128.55
DECCANCE	257	261
ENGINEERSIN	84.10	88.70

Stocks Approaching 52 Week Low

Stocks	LTP	52W Low
WIPRO	242.90	232.20
MARICO	302.20	299.20
GILLETTE	6260.65	6169.00
HINDZINC	190.65	188.15
ITC	207.70	205.00

Stocks falling continuously 2-3 days

Stocks	LTP
INDUSINDBK	1176.00
TATASTEEL	434.55
NTPC	112.70
HDFC	2401.75

Event Calendar(17th FEBRUARY to 22nd FEBRUARY 2020)

17/02/20 (Mon)	18/02/20 (Tues)	19/02/20 (Wed)	20/02/20 (Thur)	21/02/20 (Fri)	22/02/20 (Sat)
			RESULT: DHFL, AMBUJACEM, BFINVEST	RESULT: VESUVIUS ECO DATA: FX RESERVE	

DISCLAIMER

Trifid Research respects and values the Right to Privacy of each and every individual. We are esteemed by the relationship and by becoming our clients; you have a promise from our side that we shall remain loyal to all our clients and non-clients whose information resides with us. This Privacy Policy of Trifid Research applies to the current clients as well as former clients. Below are the word by word credentials of our Privacy Policy:

1. Your information, whether public or private, will not be sold, rented, exchanged, transferred or given to any company or individual for any reason without your consent.
2. The only use we will be bringing to your information will be for providing the services to you for which you have subscribed to us.
3. Your information given to us represents your identity with us. If any changes are brought in any of the fields of which you have provided us the information, you shall bring it to our notice by either calling us or dropping a mail to us.
4. In addition to the service provided to you, your information (mobile number, E-mail ID etc.) can be brought in use for sending you newsletters, surveys, contest information, or information about any new services of the company which will be for your benefit and while subscribing for our services, you agree that Trifid Research has the right to do so.
5. By subscribing to our services, you consent to our Privacy Policy and Terms of Use.
6. Trifid research does not guarantee or is responsible in any which way, for the trade execution of our recommendations, this is the sole responsibility of the client.
7. Due to the market's volatile nature, the trader may/ may not get appropriate opportunity to execute the trades at the mentioned prices and Trifid Research hold's no liability for any profit/ loss incurred whatsoever in this case.
8. It is the responsibility of the client to view the report timely from our Premium member section on our website: www.trifidresearch.com and the same will also be mailed to this registered email id.
9. Trifid research does not hold any liability or responsibility of delay in mail delivery of reports, as this depends on our mail service provider's network infrastructure.
10. The clients can call us for any query related to buying/selling the securities, based on our recommendations.