

Indian equity markets continued to reel under pressure on Tuesday, weighed down by banking stocks which have significant exposure to Vodafone Idea debts and weak global sentiment owing to coronavirus outbreak. Nifty Fut settled at 12006.10.

Metal and Auto shares were the major losers of the day while IT and Banking shares were the gainers of the day.

## Global Markets

Alstom shares fell on Tuesday after the French firm agreed to buy the rail division of Canada's Bombardier for up to 6.2 billion euros (\$6.7 billion). European shares dropped on Tuesday as a revenue warning from Apple Inc sent shockwaves through the tech sector, hammering iPhone parts makers and underlining the impact of the coronavirus outbreak on global supply chains.

INDEX	ADVANCE	DECLINE	UNCHANGED
NSE	631	1164	357
INDEX	ADVANCE	DECLINE	UNCHANGED
BSE	884	1613	157

## Gainers

LARGECAP	%CHANGE	MIDCAP	%CHANGE
COALINDIA	+2.92%	EDELWEISS	+4.70%
ZEEL	+2.72%	WHIRLPOOL	+4.39%
BPCL	+2.31%	JSWENERGY	+4.04%
GAIL	+1.48%	APOLLOHOSP	+3.49%
ADANI PORTS	+1.43%	NIPPON	+3.42%

## Losers

LARGECAP	%CHANGE	MIDCAP	%CHANGE
INFRATEL	-11.34%	UNIONBANK	-7.49%
YESBANK	-6.33%	NBCC	-5.39%
TATAMOTORS	-3.87%	LICHSGFIN	-4.19%
INDUSINDBK	-2.97%	EMAMILTD	-3.62%
HINDLACO	-2.86%	JUBILANT	-3.52%

## Nifty



## Indian Markets

INDEX	VALUE	CHANGE	%CHANGE
SENSEX	40894.38	-161.31	-0.39%
NIFTY	11992.50	-53.30	-0.44%
NIFTYBANK	30562.50	-118.20	-0.39%
INDIA VIX	14.4425	+0.03	+0.19%

## International Markets

INDEX	VALUE	CHANGE	%CHANGE
DOW	29398.08	-25.23	-0.08%
NASDAQ	9731.18	+19.21	+0.20%
FTSE	7381.11	-52.14	-0.70%
SHANGHAI	2984.94	+1.35	+0.05%
NIKKEI	32193.80	-329.44	-1.40%

## OUR PREVIOUS CALLS UPDATE

### Intraday super stars

Date	Stocks	Entry	Exit	P/L
18/02	NMDC(S)	105.65	102.50	+6057
18/02	BALKRISIND(L)	1285	-	UNEX

### Multibagger

Date	Stock	Entry	Exit	P/L
14/02	TATASTEEL(S)	440	436	+6000

### Trifid special

Date	Stock	Entry	Exit	P/L
12/01	APOLLOHOSP(L)	1705	1670.90	-6000

## Stock Snippets

Carmaker Maruti Suzuki India (MSI) on Tuesday launched BS-VI compliant version of its premium compact car Ignis priced between Rs 4.89-7.19 lakh. The new Ignis is powered by 1.2 litre petrol engine and comes with manual and Auto Gear Shift (AGS) transmission options, the company said in a statement.

Casual dining chain Barbeque Nation Hospitality has filed fresh papers with markets regulator Sebi to raise an estimated Rs 1,000-1,200 crore through an initial public offering. The IPO comprises a fresh issue of shares worth Rs275 crore and an offer-for-sale of up to 98,22,947 equity shares.

Hero MotoCorp on Tuesday announced investment of Rs 10,000 crore over the next 5-7 years on various activities, including research and development and setting up new manufacturing facilities.

Reliance Industries announced a consolidation of its media and distribution businesses spread across multiple entities into Network18. Under the Scheme of Arrangement, TV18 Broadcast, Hathway Cable & Datacom and Den Networks will merge into Network18 Media & Investments

## Global Markets

The major Asia Pacific stocks indexes closed mostly lower on Tuesday after Apple Inc. said it will not meet its revenue guidance for the March quarter as the coronavirus outbreak slowed production and weakened demand in China.

Japan stocks were lower after the close on Tuesday, as losses in the Paper & Pulp, Railway & Bus and Real Estate sectors led shares lower. The Nikkei 225 fell 1.40%.

Australia stocks were lower after the close on Tuesday, as losses in the IT, Energy and Gold sectors led shares lower. The S&P/ASX 200 lost 0.16%

DATE: 18/02/20

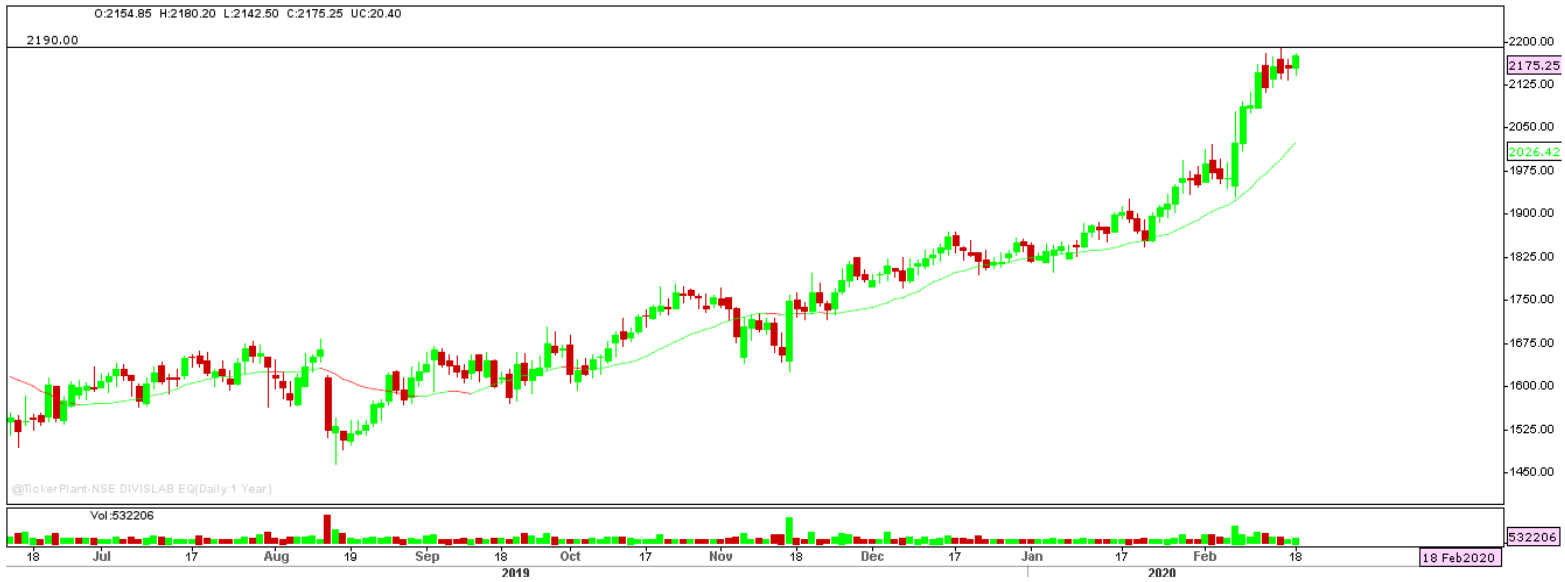
FII/DII	CASH	MTD	YTD
FII	-74.39	-873.28	-1523.43
DII	-309.43	+7295.68	+7481.98

## Sectoral gainers and losers

SECTOR	%CHANGE IN MARKETCAP	ADV	DEC
Media & Entertainment	1.88%	15	17
Alcohol	1.74%	6	4
Software & IT Services	0.39%	29	58
Infrastructure	0.32%	17	41
Healthcare	0.24%	36	60
Consumer Durables	0.20%	10	16
Miscellaneous	0.00%	19	24
Electricals	-0.12%	6	19
Hospitality	-0.29%	6	18
Chemicals	-0.39%	37	68
Textiles	-0.41%	35	65
Finance	-0.43%	45	74
Banks	-0.50%	6	34
Construction Materials	-0.51%	12	43
Capital Goods	-0.52%	27	60
FMCG	-0.68%	12	30
Power	-0.91%	8	22
Agri	-1.00%	17	44
ETF	-1.01%	18	36
Automobile & Ancillaries	-1.04%	37	78
Real Estate	-1.06%	10	44
Diversified	-1.07%	7	14
Metals & Mining	-1.15%	24	69
Logistics	-1.45%	8	20

## Stocks breakout on moving average

STOCKS	PRICE	30DMA
AUROPHARMA	500.40	495.85
AMARAJABAT	777.25	771.77
PERSISTENT	706.60	705.30
JSWENERGY	65.70	65.60



DIVISLAB EQ is being trading on its long term bullish trend and settled near the resistance level. The stock may give breakout in coming trade session.

**BUY ABOVE 2190 TARGETS 2211.90/2233.80/2255.70 SL 2168.10**



INFY EQ traded higher forming bullish engulfing candle on daily chart and settled near the critical resistance level. The stock may surge higher in coming trade session.

**BUY ABOVE 799.20 TARGETS 807.20/815.20/823.20 SL 791.20**



KOTAKBANK FUT is being forming consolidation near immediate support level and settled forming bullish harami candle on daily chart. The stock fut may breakout further.

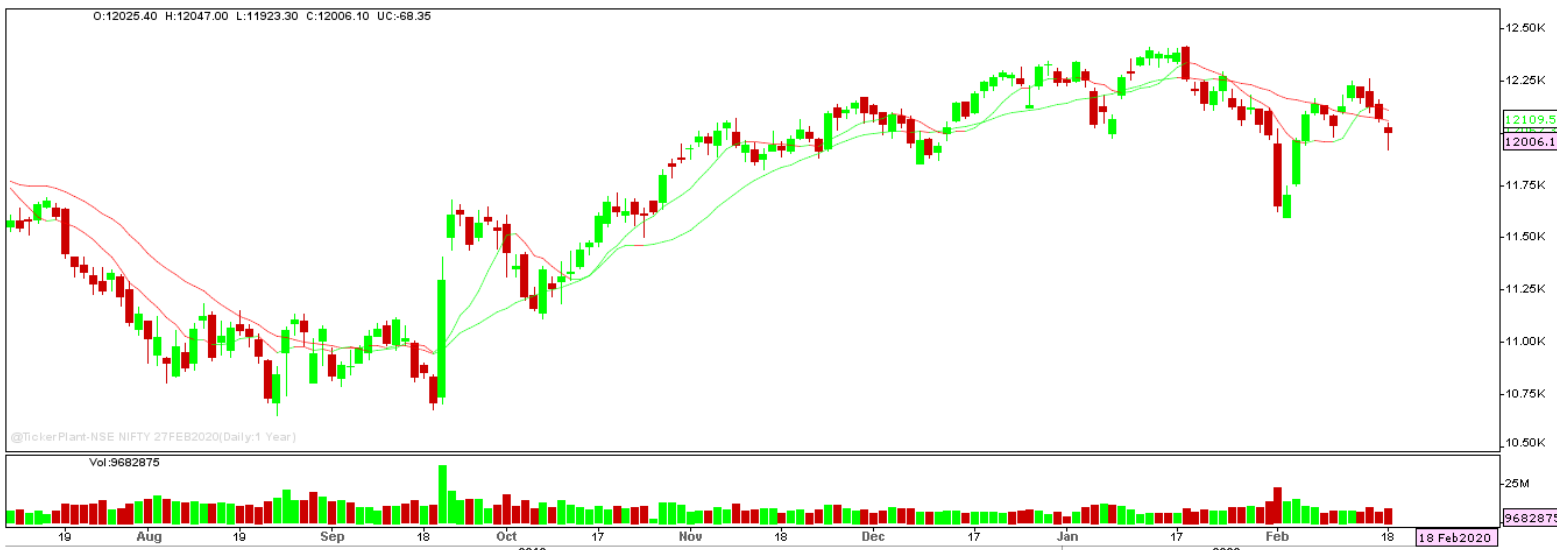
**BUY ABOVE 1705 TARGETS 1712.50/1720 SL 1697.50**



ESCORTS EQ traded higher forming bullish candle on daily chart and settled near the critical resistance level. The stock may surge higher in coming trade session.

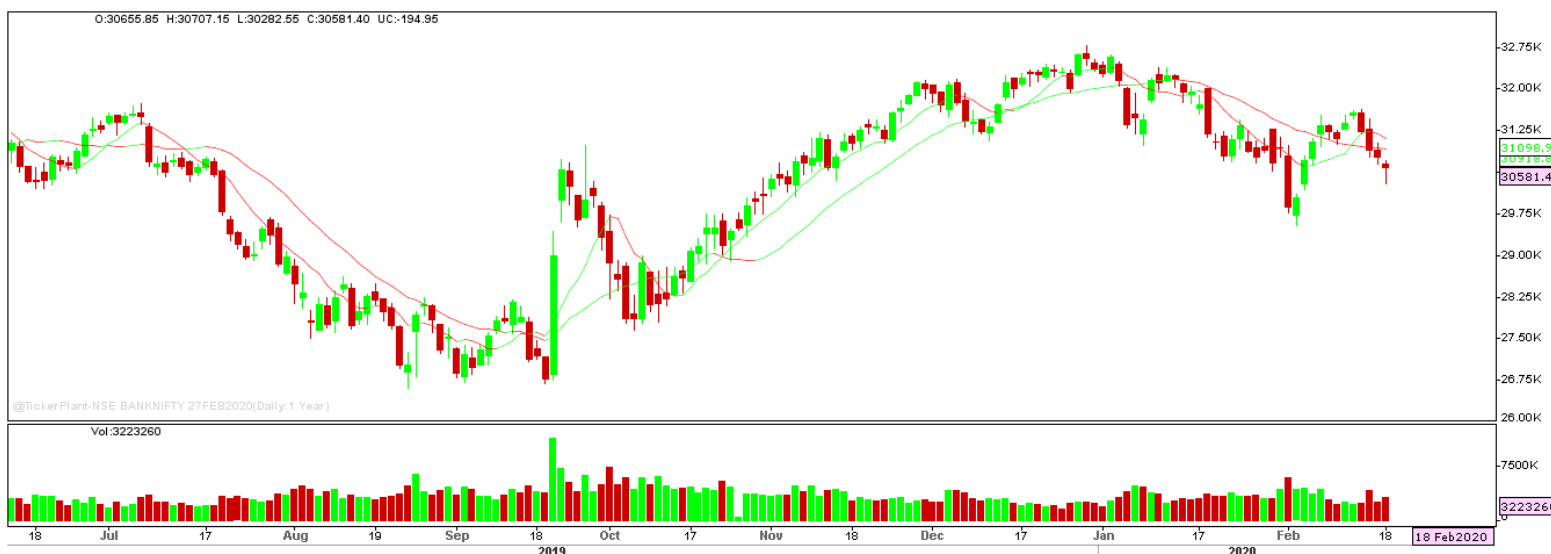
**BUY ABOVE 882.50 TARGETS 900.15 SL 864.85**

## Nifty Technical's



Nifty Future tanked forming dozi candle on daily chart to close at 12006.10. The next key support and resistance for the market is at 11925 and 12125.

## Bank Nifty Technical's



Bank nifty fut too traded in line with nifty50 to close forming dozi candle on daily chart at 30581.40. The next key support and resistance for the banking index is at 30285 and 30800.

Index	17-FEB-20	18-FEB-20	Change in OI	% Change
NIFTY	12317025	12216600	-100425	-0.82%

**SCRIPS IN F&O BAN FOR TRADE**  
NCC, YESBANK.

## Stocks at 52 Week High

Stocks	New 52 W/H	Previous High
APOLLOHOSP	1784.40	1747.70
BHARTIARTL	568.85	568.70
IRCTC	1648	1609.80
MCDOWELL-N	729.90	715.45
MINDTREE	1000.70	996.40

## Stocks Approaching 52 Week High

Stocks	LTP	52W High
BAJFINANCE	4758	4815
TECHM	838.80	846.50
DIVISLAB	2175.25	2190
ICICIBANK	541.20	519
PIDILITIND	1579.85	1607

## Stocks rising continuously 2-3 days

Stocks	LTP
MINDTREE	997.00
ESCORTS	888.65
ZEEL	245.60
INFY	797.65

## Stocks at 52 Week Low

Stocks	New 52 W/L	Previous Low
BANDHANBNK	420.20	421
BASF	832.45	862
DBCORP	123.25	124
DYNAMATECH	856	891
ENGINEERSIN	78.30	80.70

## Stocks Approaching 52 Week Low

Stocks	LTP	52W Low
LT	1286.35	1240
M&M	523.20	502.55
HAVELLS	600.50	585.50
GPPL	78.10	75
POWERGRID	185	176.95

## Stocks falling continuously 2-3 days

Stocks	LTP
INFRATEL	210.00
YESBANK	35.05
TATAMOTORS	161.60
INDUSINDBK	1140.70

## Event Calendar(17<sup>th</sup> FEBRUARY to 22<sup>nd</sup> FEBRUARY 2020)

17/02/20 (Mon)	18/02/20 (Tues)	19/02/20 (Wed)	20/02/20 (Thur)	21/02/20 (Fri)	22/02/20 (Sat)
			RESULT: DHFL, AMBUJACEM, BFINVEST	RESULT: VESUVIUS ECO DATA: FX RESERVE	

## DISCLAIMER

Trifid Research respects and values the Right to Privacy of each and every individual. We are esteemed by the relationship and by becoming our clients; you have a promise from our side that we shall remain loyal to all our clients and non-clients whose information resides with us. This Privacy Policy of Trifid Research applies to the current clients as well as former clients. Below are the word by word credentials of our Privacy Policy:

1. Your information, whether public or private, will not be sold, rented, exchanged, transferred or given to any company or individual for any reason without your consent.
2. The only use we will be bringing to your information will be for providing the services to you for which you have subscribed to us.
3. Your information given to us represents your identity with us. If any changes are brought in any of the fields of which you have provided us the information, you shall bring it to our notice by either calling us or dropping a mail to us.
4. In addition to the service provided to you, your information (mobile number, E-mail ID etc.) can be brought in use for sending you newsletters, surveys, contest information, or information about any new services of the company which will be for your benefit and while subscribing for our services, you agree that Trifid Research has the right to do so.
5. By subscribing to our services, you consent to our Privacy Policy and Terms of Use.
6. Trifid research does not guarantee or is responsible in any which way, for the trade execution of our recommendations, this is the sole responsibility of the client.
7. Due to the market's volatile nature, the trader may/ may not get appropriate opportunity to execute the trades at the mentioned prices and Trifid Research hold's no liability for any profit/ loss incurred whatsoever in this case.
8. It is the responsibility of the client to view the report timely from our Premium member section on our website: [www.trifidresearch.com](http://www.trifidresearch.com) and the same will also be mailed to this registered email id.
9. Trifid research does not hold any liability or responsibility of delay in mail delivery of reports, as this depends on our mail service provider's network infrastructure.
10. The clients can call us for any query related to buying/selling the securities, based on our recommendations.