

The equity benchmark ended near the day's high after a stellar run on Wednesday. Buying was supported by positive global shares. Sentiment also improved after the finance minister said the government would unveil measures to limit the impact of the coronavirus outbreak.

The Union Cabinet is currently addressing the media from 15:30 IST today.

Global Markets

Renault's shares fell on Wednesday after credit rating agency Moody's cut its rating on the French carmaker's debts to "junk" status. Renault shares were down 2.3% to 30.2 euros. European stock markets pushed higher Wednesday, helped by strong earnings from index heavyweight Deutsche Telekom, while market participants looking to central banks to mitigate the damage caused by the outbreak of the coronavirus in China..

INDEX	ADVANCE	DECLINE	UNCHANGED
NSE	1179	617	357
INDEX	ADVANCE	DECLINE	UNCHANGED
BSE	1518	1010	179

Gainers

LARGECAP	%CHANGE	MIDCAP	%CHANGE
INFRADEL	+7.00%	NIPPON	+9.53%
GRASIM	+4.41%	IPCALAB	+6.65%
COALINDIA	+3.46%	JUBILANT	+6.20%
ZEEL	+2.81%	VOLTAS	+5.17%
HINDUNILVR	+2.76%	SUNTV	+4.95%

Losers

LARGECAP	%CHANGE	MIDCAP	%CHANGE
TATAMOTORS	-2.17%	HEXAWARE	-4.54%
JSWSTEEL	-1.40%	WHIRLPOOL	-4.47%
SUNPHARMA	-1.32%	JSWENERGY	-1.67%
TCS	-0.98%	RAJESHEXPO	-1.09%
BHARTIARTL	-0.78%	SAIL	-0.72%

Nifty



Indian Markets

INDEX	VALUE	CHANGE	%CHANGE
SENSEX	41323.00	+428.62	+1.05%
NIFTY	12125.90	+133.40	+1.11%
NIFTYBANK	30838.20	+275.70	+0.90%
INDIA VIX	14.0800	-0.43	-2.96%

International Markets

INDEX	VALUE	CHANGE	%CHANGE
DOW	29232.19	-165.89	-0.56%
NASDAQ	9732.74	+1.56	+0.02%
FTSE	7435.67	+53.66	+0.73%
SHANGHAI	2975.40	-9.57	-0.32%
NIKKEI	23400.70	+206.90	+0.89%

OUR PREVIOUS CALLS UPDATE

Intraday super stars

Date	Stocks	Entry	Exit	P/L
19/02	INFY(L)	799.20	800.40	+300
19/02	DIVISLAB(L)	2190	2194.2	+383

Multibagger

Date	Stock	Entry	Exit	P/L
19/02	KOTAKBANK(L)	1705	1720	+6000

Trifid special

Date	Stock	Entry	Exit	P/L
13/01	ESCORTS(L)	882.50	900.15	+6000

Stock Snippets

Oil ministry approved initial bid document for **BPCL's** sale and recommends selling of company's marketing and refining verticals together: Government Official.

SpiceJet to launch 20 new domestic flights from March 29 as it is going to introduce UDAN flights on Amritsar-Patna and Varanasi-Patna routes.

Aurobindo Pharma share price gained 19 percent on February 19 after company received establishment inspection report (EIR) from USFDA.

Infosys partners with GE Appliances to enable digital and workplace transformation.

Hero MotoCorp is going to stop production of BS-IV Motorcycles today and will transition fully to BS-VI. The company has already made a complete switch to making BS-VI scooters.

SBI Cards IPO to be launched on March 2, offer price likely to be Rs 745-775 per share.

Global Markets

Asian markets rose on Wednesday morning, with Japanese stocks outperforming following the release of the country's trade data.

Japan stocks were higher after the close on Wednesday, as gains in the Paper & Pulp, Railway & Bus and Real Estate sectors led shares higher. The Nikkei 225 gained 0.89%.

Australia stocks were higher after the close on Wednesday, as gains in the Gold, Healthcare and Consumer Discretionary sectors led shares higher. The S&P/ASX 200 rose 0.43% to hit a new all time high.

DATE: 19/02/20

FII/DII	CASH	MTD	YTD
FII	-190.66	-1063.94	-1714.09
DII	+590.12	+7885.80	+8072.10

Sectoral gainers and losers

SECTOR	%CHANGE IN MARKETCAP	ADV	DEC
Miscellaneous	3.64%	29	14
Paper	3.25%	19	3
Media & Entertainment	2.57%	20	17
Hospitality	2.46%	17	8
Finance	2.32%	82	33
Healthcare	2.06%	70	27
Diversified	1.92%	15	6
FMCG	1.70%	27	14
ETF	1.60%	48	6
Capital Goods	1.57%	53	31
Construction Materials	1.55%	40	13
Power	1.55%	17	10
Real Estate	1.40%	32	19
Metals & Mining	1.24%	59	34
Plastic Products	1.07%	18	9
Chemicals	0.93%	65	39
Textiles	0.87%	55	48
Banks	0.86%	35	4
Electricals	0.67%	16	7
Consumer Durables	0.52%	14	9
Infrastructure	0.32%	32	24
Agri	0.15%	41	19
Automobile & Ancillaries	0.11%	75	39
Software & IT Services	-0.18%	55	32

Stocks breakout on moving average

STOCKS	PRICE	30DMA
CUPID	237.20	226.86
TATAELXSI	1005.70	972.40
SUNTV	495.10	479.76
PFIZER	4220.05	4143.62



APOLLOTYRE EQ is being trading on its short term bearish trend and settled near the lower level. The stock may fall further in coming trade session.

SELL BELOW 150.35 TARGETS 148.85/147.35/145.85 SL 151.85



BEML EQ is being trading on its short term bearish trend and settled near the lower level. The stock may fall further in coming trade session.

SELL BELOW 870.20 TARGETS 861.50/852.80/844.10 SL 878.90



ASIANPAINT FUT is being forming consolidation near immediate resistance level and settled forming bullish hammer candle on daily chart. The stock fut may give breakout in coming trade session.

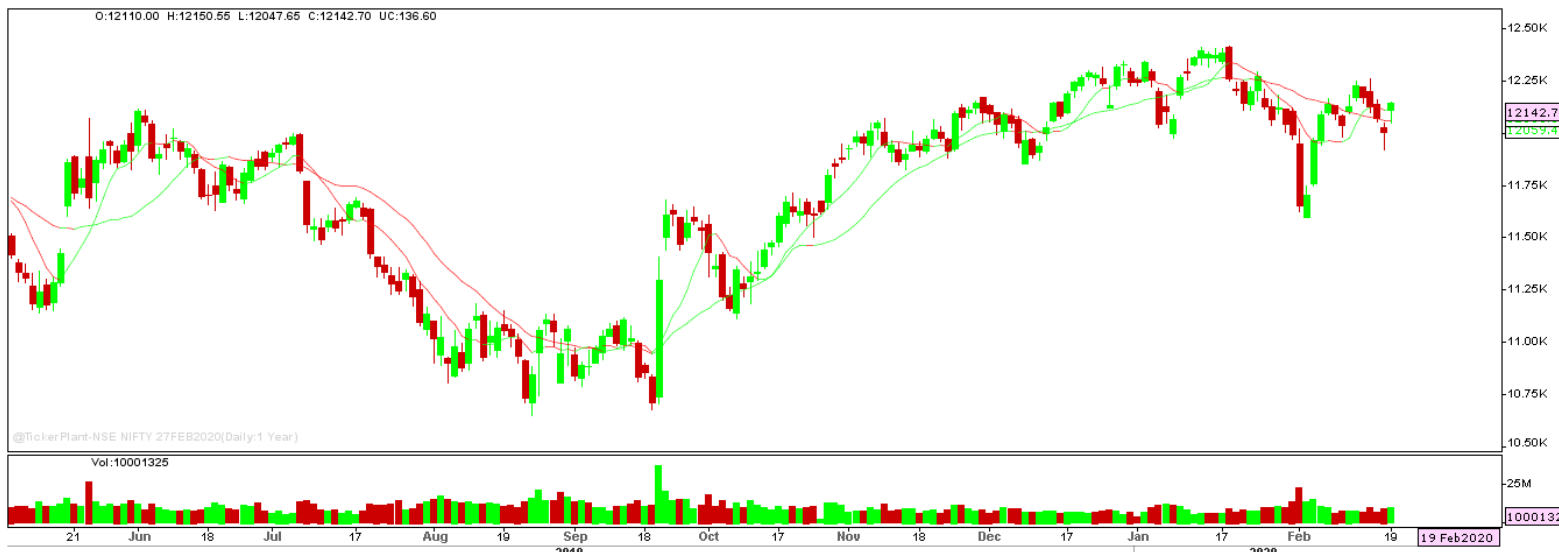
BUY ABOVE 1895 TARGETS 1900/1905 SL 1890



PFC EQ traded higher forming bullish candle on daily chart and settled near the critical resistance level. The stock may surge higher in coming trade session.

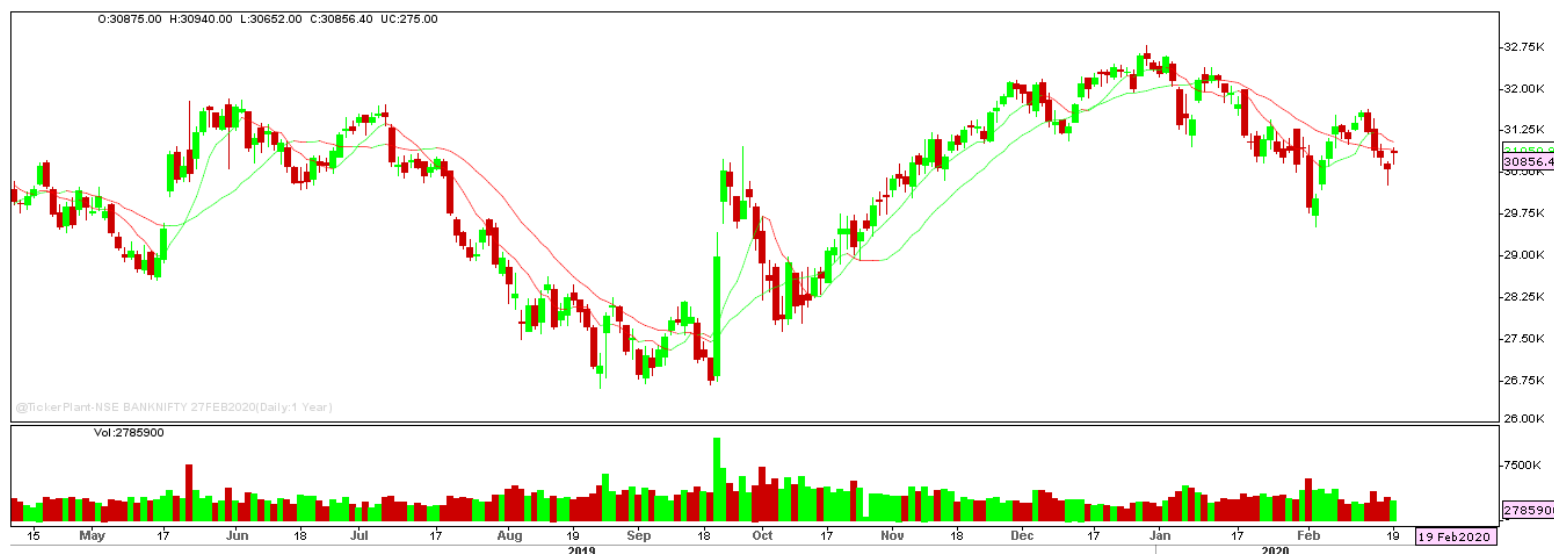
BUY ABOVE 130.70 TARGETS 133.30 SL 128.10

Nifty Technical's



Nifty Future surged higher forming bullish hammer candle on daily chart to close at 12142.70. The next key support and resistance for the market is at 12050 and 12225.

Bank Nifty Technical's



Bank nifty fut too traded in line with nifty50 to close forming hammer candle on daily chart and settled at 30856.40. The next key support and resistance for the banking index is at 30500 and 31100.

Index	18-FEB-20	19-FEB-20	Change in OI	% Change
NIFTY	12216600	11783700	-432900	-3.54%

SCRIPS IN F&O BAN FOR TRADE
NCC, YESBANK.

Stocks at 52 Week High

Stocks	New 52 W/H	Previous High
APOLLOHOSP	1792.60	1784.40
AUBANK	1204	1178
BAJFINANCE	4887	4815
DIVISLAB	2195	2190
ESCORTS	914.70	896.20

Stocks Approaching 52 Week High

Stocks	LTP	52W High
TECHM	840.90	846.50
SRF	4162.15	4230
HCLTECH	605.75	623.50
ICICIBANK	544.80	519
PIDILITIND	1593.75	1607

Stocks rising continuously 2-3 days

Stocks	LTP
MINDTREE	1013.60
ESCORTS	909.85
ZEEL	252.25
INFY	800.45

Stocks at 52 Week Low

Stocks	New 52 W/L	Previous Low
BANDHANBNK	409	420.20
GHCL	168.95	170.15
IFBIND	511	514.85
SHEMAROO	70.90	74.60
-	-	-

Stocks Approaching 52 Week Low

Stocks	LTP	52W Low
LT	1281.40	1240
M&M	526.40	502.55
HAVELLS	618.55	585.50
GPPL	78.40	75
POWERGRID	187	176.95

Stocks falling continuously 2-3 days

Stocks	LTP
JSWSTEEL	280.85
SUNPHARMA	403.55
BHARTIARTL	543.40
HCLTECH	605.75

Event Calendar(17th FEBRUARY to 22nd FEBRUARY 2020)

17/02/20 (Mon)	18/02/20 (Tues)	19/02/20 (Wed)	20/02/20 (Thur)	21/02/20 (Fri)	22/02/20 (Sat)
			RESULT: DHFL, AMBUJACEM, BFINVEST	RESULT: VESUVIUS ECO DATA: FX RESERVE	

DISCLAIMER

Trifid Research respects and values the Right to Privacy of each and every individual. We are esteemed by the relationship and by becoming our clients; you have a promise from our side that we shall remain loyal to all our clients and non-clients whose information resides with us. This Privacy Policy of Trifid Research applies to the current clients as well as former clients. Below are the word by word credentials of our Privacy Policy:

1. Your information, whether public or private, will not be sold, rented, exchanged, transferred or given to any company or individual for any reason without your consent.
2. The only use we will be bringing to your information will be for providing the services to you for which you have subscribed to us.
3. Your information given to us represents your identity with us. If any changes are brought in any of the fields of which you have provided us the information, you shall bring it to our notice by either calling us or dropping a mail to us.
4. In addition to the service provided to you, your information (mobile number, E-mail ID etc.) can be brought in use for sending you newsletters, surveys, contest information, or information about any new services of the company which will be for your benefit and while subscribing for our services, you agree that Trifid Research has the right to do so.
5. By subscribing to our services, you consent to our Privacy Policy and Terms of Use.
6. Trifid research does not guarantee or is responsible in any which way, for the trade execution of our recommendations, this is the sole responsibility of the client.
7. Due to the market's volatile nature, the trader may/ may not get appropriate opportunity to execute the trades at the mentioned prices and Trifid Research hold's no liability for any profit/ loss incurred whatsoever in this case.
8. It is the responsibility of the client to view the report timely from our Premium member section on our website: www.trifidresearch.com and the same will also be mailed to this registered email id.
9. Trifid research does not hold any liability or responsibility of delay in mail delivery of reports, as this depends on our mail service provider's network infrastructure.
10. The clients can call us for any query related to buying/selling the securities, based on our recommendations.