

Stock market hit circuit breaker on Friday as markets continued to witness panic selling amid fears pandemic Coronavirus will derail economic growth. Trading was halted in the early trade as the benchmark index Nifty hit the 10 per cent lower circuit. Asia's stock markets crashed on Friday as panic gripping world financial markets deepened. Nifty settled lower at 9897.70.

For our BIG PROFIT calls and LATEST Reports, SUBSCRIBE to our Premium Reports. Click here.....

Global Markets

Starbucks will invest 900 million yuan to build the first phase of a coffee complex in the Chinese city of Kunshan, near the commercial hub of Shanghai, with completion targeted for 2022. European stock markets bounced back from their worst day ever, as signs of a U.S. stimulus package helped soothe fears about an economic shock from the coronavirus pandemic. The benchmark STOXX 600 index (STOXX) was up 4%.

Nifty



Indian Markets

INDEX	VALUE	CHANGE	%CHANGE
SENSEX	34103.48	+1325.34	+4.04%
NIFTY	9955.20	+365.05	+3.81%
NIFTYBANK	25166.45	+1195.30	+4.99%
INDIA VIX	51.2200	+10.06	+24.43%

International Markets

INDEX	VALUE	CHANGE	%CHANGE
DOW	21200.62	-2352.60	-9.99%
NASDAQ	7201.80	-750.25	-9.43%
FTSE	5555.98	+318.50	+6.08%
SHANGHAI	2887.43	-36.06	-1.23%
NIKKEI	17431.05	-1128.58	-6.08%

INDEX	ADVANCE	DECLINE	UNCHANGED
NSE	987	838	298
INDEX	ADVANCE	DECLINE	UNCHANGED
BSE	1244	1143	162

Gainers

LARGECAP	%CHANGE	MIDCAP	%CHANGE
SBIN	+14.89%	LICHSGFIN	+9.75%
TATASTEEL	+14.52%	CANBK	+9.04%
HDFC	+10.50%	NIPPON	+8.98%
BPCL	+9.64%	MRF	+8.87%
SUNPHARMA	+8.79%	RECLTD	+8.32%

Losers

LARGECAP	%CHANGE	MIDCAP	%CHANGE
UPL	-7.15%	RAJESHEXPO	-8.87%
ZEEL	-4.17%	GRAPHITE	-6.28%
NESTLEIND	-3.70%	JUBILANT	-5.94%
ASIANPAINT	-2.47%	HEG	-4.39%
BRITANNIA	-1.84%	CASTROLIND	-3.70%

OUR PREVIOUS CALLS UPDATE

Intraday super stars

Date	Stocks	Entry	Exit	P/L
13/03	CADILAH(C)	234.50	224.50	+8571
13/03	ZEEL(S)	188	182.40	+6010

Multibagger

Date	Stock	Entry	Exit	P/L
13/03	INDIGO(L)	1018.1	1008.2	-3000

Trifid special

Date	Stock	Entry	Exit	P/L
13/03	INFRA TEL(L)	223	227.45	+5986

Stock Snippets

As part of the YES Bank restructuring plan, Life Insurance Corporation of India (LIC) would buy around 1.35 billion shares at a price of Rs 10 apiece.

Tata Steel on Friday said its committee of directors has approved raising Rs 670 crore through issuance of debentures.

Shares of Jet Airways on Friday plunged as much as 4.74 per cent to hit lower price band .

Sterlite Power announced that the sale process of Sterlite Novo Estado Energia S A (Novo Estado) to ENGIE Transmissão de Energia S A was concluded, with all precedent conditions met.

State-run Power Finance Corporation (PFC) paid an interim dividend of Rs 1,404.37 crore to the Government of India for 2019-20.

Global Markets

Japan stocks were lower after the close on Friday, as losses in the Paper & Pulp, Railway & Bus and Real Estate sectors led shares lower. At the close in Tokyo, the Nikkei 225 declined 6.02% to hit a new 3-years low.

Australia stocks were higher after the close on Friday, as gains in the Healthcare, Energy and Consumer Staples sectors led shares higher. The S&P/ASX 200 gained 4.42%.

U.S. stocks were lower after the close on Thursday, as losses in the Oil & Gas, Utilities and Financials sectors led shares lower. The Dow Jones Industrial Average fell 9.99% .

DATE: 13/03/20

FII/DII	CASH	MTD	YTD
FII	-9542.96	-24769.74	-37568.14
DII	+8703.36	+45688.81	+46365.11

Sectoral gainers and losers

SECTOR	%CHANGE IN MARKETCAP	ADV	DEC
Finance	5.81%	71	43
Banks	4.95%	30	10
Agri	4.30%	36	24
Metals & Mining	3.71%	50	44
Diversified	3.45%	13	7
Healthcare	3.41%	63	32
Construction Materials	3.36%	25	29
ETF	3.23%	33	22
Real Estate	2.91%	22	33
Consumer Durables	2.91%	12	13
Infrastructure	2.86%	27	32
Power	2.64%	11	16
Textiles	2.37%	49	49
Logistics	2.35%	19	10
Electricals	2.10%	14	11
Automobile & Ancillaries	1.90%	60	55
Plastic Products	1.63%	12	16
Capital Goods	1.49%	49	37
Software & IT Services	1.33%	33	51
Hospitality	0.66%	12	14
FMCG	-0.27%	23	19
Miscellaneous	-0.74%	21	27
Chemicals	-1.10%	62	46
Media & Entertainment	-1.20%	11	19

Stocks breakout on moving average

STOCKS	PRICE	30DMA
INDIACEM	87.30	82.57
OMAXE	159.55	156.14
PFIZER	4276.95	4224.85
SANOFI	7173.60	7097.32



Stock is forming consolidation on intraday chart thus breakout is expected in coming trade session.

**** TARGETS ****/**** SL ****. For complete call subscribe to our premium reports.



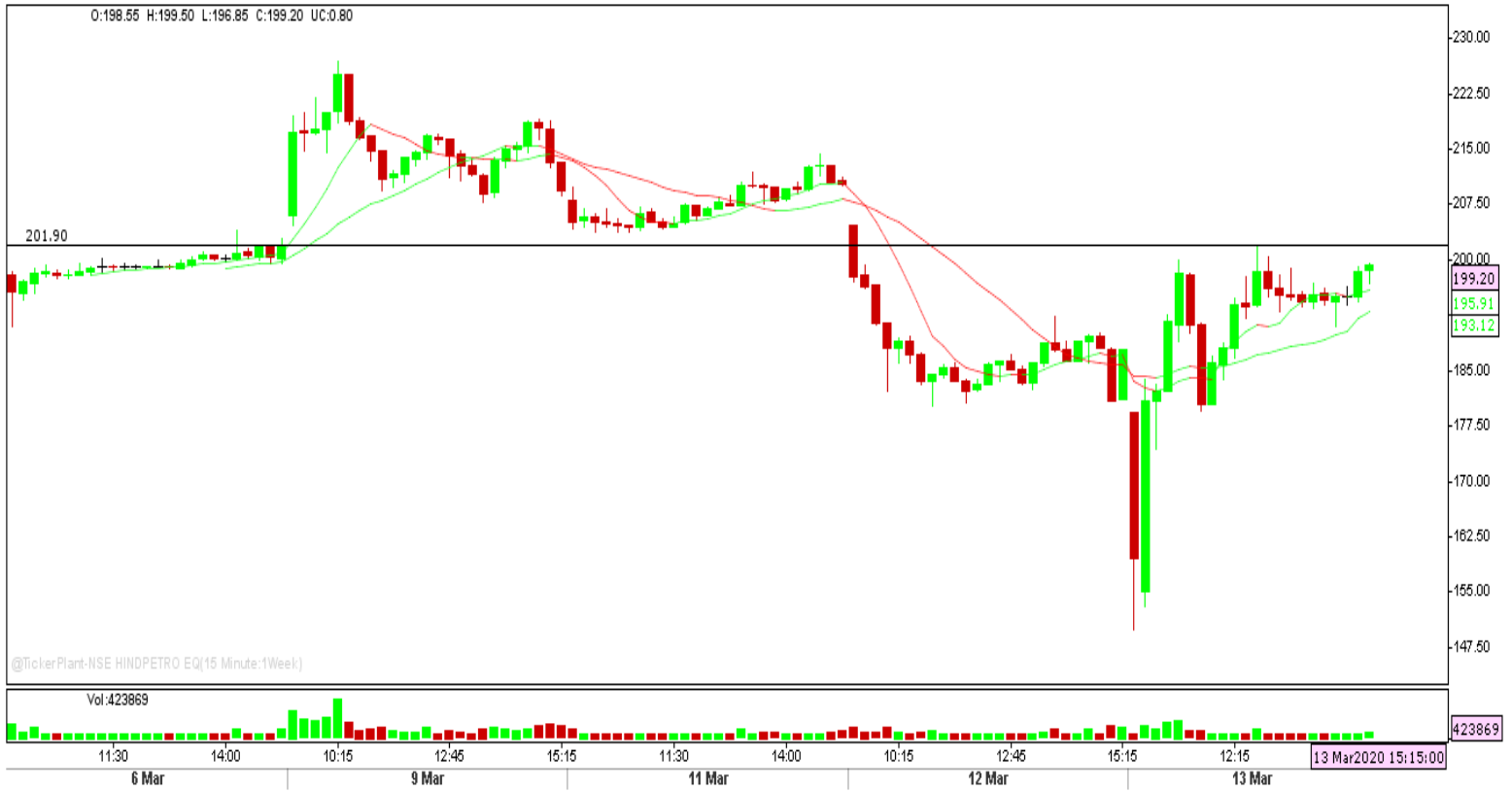
Stock is forming consolidation on intraday chart thus breakout is expected in coming trade session.

**** TARGETS ****/**** SL ****. For complete call subscribe to our premium reports.



Stock Future is forming bullish consolidation on intraday chart thus breakout is expected in coming trade session.

**** TARGETS ****/**** SL ****. [For complete call subscribe to our premium reports.](#)



Stock surged higher with increasing buy side volume and settled near the resistance level. The stock may give breakout in coming trade session.

**** TARGETS ****/**** SL ****. [For complete call subscribe to our premium reports.](#)

Nifty Technical's



Nifty Future traded volatile hitting lower circuit in morning session and then recovered well to end higher at 9897.70. The next key support and resistance for the market is at 9300 and 10200.

Bank Nifty Technical's



Bank nifty fut too traded in line with nifty 50 to close higher at 25028.90. The next key support and resistance for the banking index is at 22000 and 27000.

Index	12-MAR-20	13-MAR-20	Change in OI	% Change
NIFTY	18345750	15456750	-761625	-4.70%

SCRIPS IN F&O BAN FOR TRADE

NIL

Stocks at 52 Week High

Stocks	New 52 W/H	Previous High
RUCHI	96.05	91.50
-	-	-
-	-	-
-	-	-
-	-	-

Stocks Approaching 52 Week High

Stocks	LTP	52W High
ASIANPAINT	1797.70	1916.70
SANOFI	7173.60	7649.95
-	-	-
-	-	-
-	-	-

Stocks rising continuously 2-3 days

Stocks	LTP
TATASTEEL	326.70
-	-
-	-
-	-

Stocks at 52 Week Low

Stocks	New 52 W/L	Previous Low
ACC	1020.15	1082.65
ADANIGAS	84.55	95.85
ADANIPOWER	232	284
ADANIPORTS	23	29.70
ADANITRANS	147.50	163.75

Stocks Approaching 52 Week Low

Stocks	LTP	52W Low
CASTROLIND	123.60	112.75
-	-	-
-	-	-
-	-	-
-	-	-

Stocks falling continuously 2-3 days

Stocks	LTP
UPL	410.85
ZEEL	182.80
NESTLEIND	14991.80
WIPRO	197.40

Event Calendar(16th MARCH to 21st MARCH 2020)

16/03/20 (Mon)	17/03/20 (Tues)	18/03/20 (Wed)	19/03/20 (Thur)	20/03/20 (Fri)	21/03/20 (Sat)
ECO DATA:					
WPI INFLATION					
DATA					

DISCLAIMER

Trifid Research respects and values the Right to Privacy of each and every individual. We are esteemed by the relationship and by becoming our clients; you have a promise from our side that we shall remain loyal to all our clients and non-clients whose information resides with us. This Privacy Policy of Trifid Research applies to the current clients as well as former clients. Below are the word by word credentials of our Privacy Policy:

1. Your information, whether public or private, will not be sold, rented, exchanged, transferred or given to any company or individual for any reason without your consent.
2. The only use we will be bringing to your information will be for providing the services to you for which you have subscribed to us.
3. Your information given to us represents your identity with us. If any changes are brought in any of the fields of which you have provided us the information, you shall bring it to our notice by either calling us or dropping a mail to us.
4. In addition to the service provided to you, your information (mobile number, E-mail ID etc.) can be brought in use for sending you newsletters, surveys, contest information, or information about any new services of the company which will be for your benefit and while subscribing for our services, you agree that Trifid Research has the right to do so.
5. By subscribing to our services, you consent to our Privacy Policy and Terms of Use.
6. Trifid research does not guarantee or is responsible in any which way, for the trade execution of our recommendations, this is the sole responsibility of the client.
7. Due to the market's volatile nature, the trader may/ may not get appropriate opportunity to execute the trades at the mentioned prices and Trifid Research hold's no liability for any profit/ loss incurred whatsoever in this case.
8. It is the responsibility of the client to view the report timely from our Premium member section on our website: www.trifidresearch.com and the same will also be mailed to this registered email id.
9. Trifid research does not hold any liability or responsibility of delay in mail delivery of reports, as this depends on our mail service provider's network infrastructure.
10. The clients can call us for any query related to buying/selling the securities, based on our recommendations.